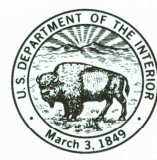


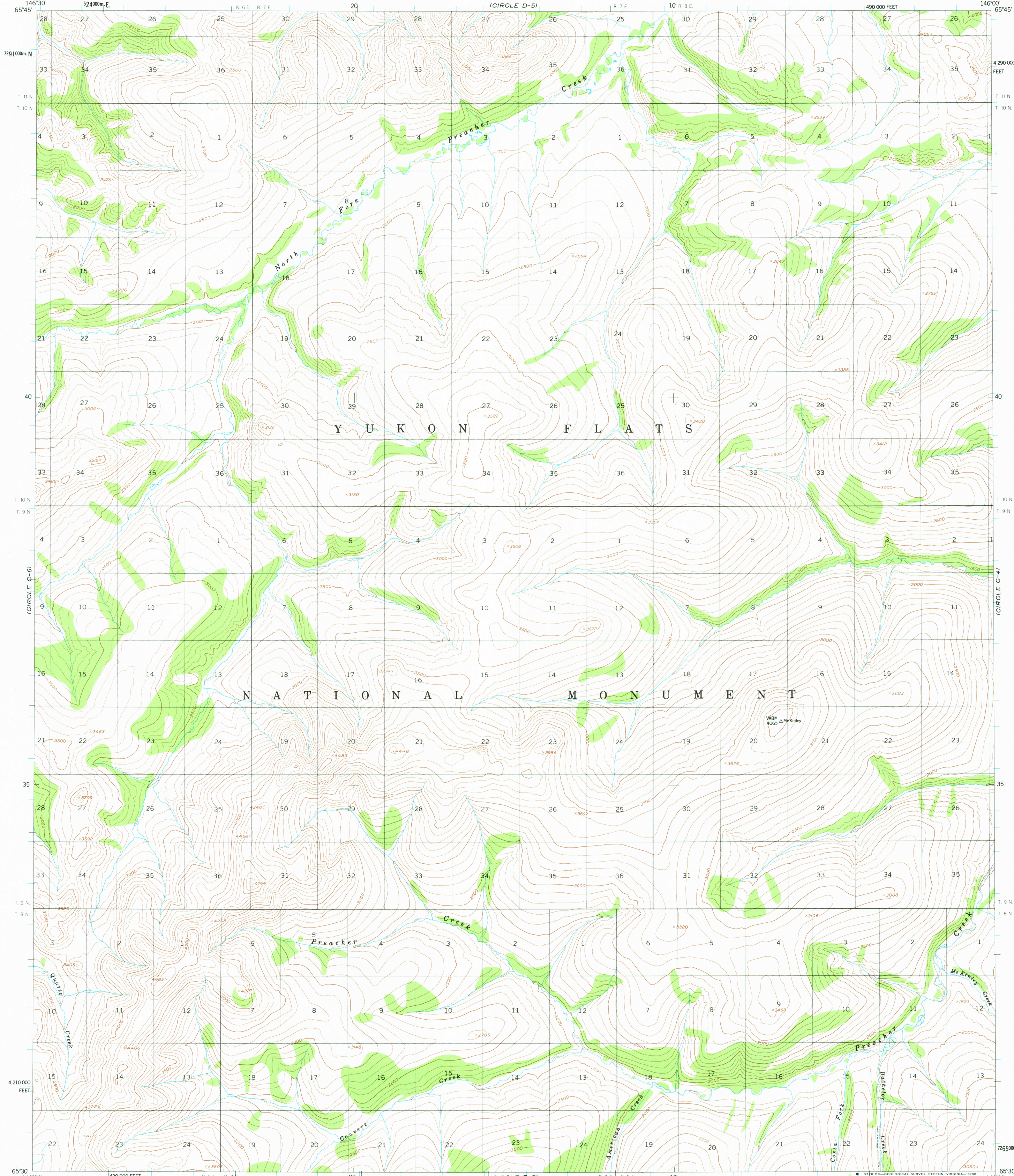
(CIRCLE D-6)

UNITED STATES
DEPARTMENT OF THE INTERIOR
GEOLOGICAL SURVEY



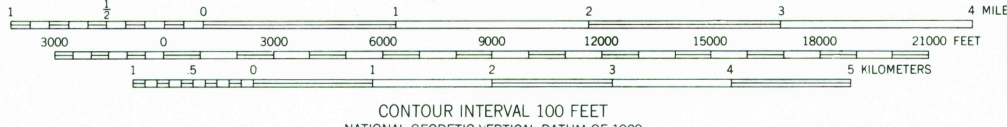
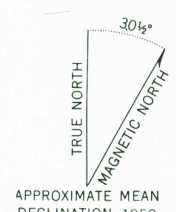
CIRCLE (C-5) QUADRANGLE
ALASKA
1:63 360 SERIES (TOPOGRAPHIC)

(CIRCLE D-4)



(CIRCLE B-6)

Mapped, edited, and published by the Geological Survey
Control by USGS
Topography by photogrammetric methods from aerial photographs taken 1951, field annotated 1952. Map not field checked
Universal Transverse Mercator projection, 1927 North American datum
10,000-foot grid based on Alaska coordinate system, zone 3
1000-metre Universal Transverse Mercator grid ticks, zone 6, shown in blue
Land lines represent unsurveyed and unmarked locations predetermined by the Bureau of Land Management
Folio F-7, Fairbanks Meridian
There may be private inholdings within the boundaries of the Yukon Flats National Monument shown on this map



CONTOUR INTERVAL 100 FEET
NATIONAL GEODETIC VERTICAL DATUM OF 1929

FOR SALE BY U. S. GEOLOGICAL SURVEY
FAIRBANKS, ALASKA 99701, DENVER, COLORADO 80225, OR RESTON, VIRGINIA 22092
A FOLDER DESCRIBING TOPOGRAPHIC MAPS AND SYMBOLS IS AVAILABLE ON REQUEST



USGS
Historical File
Topographic Division

CIRCLE (C-5), ALASKA
N6530-W14600/15X30
1952
MINOR REVISIONS 1973

ROAD CLASSIFICATION
Trails

MAY - 5 1980

2900