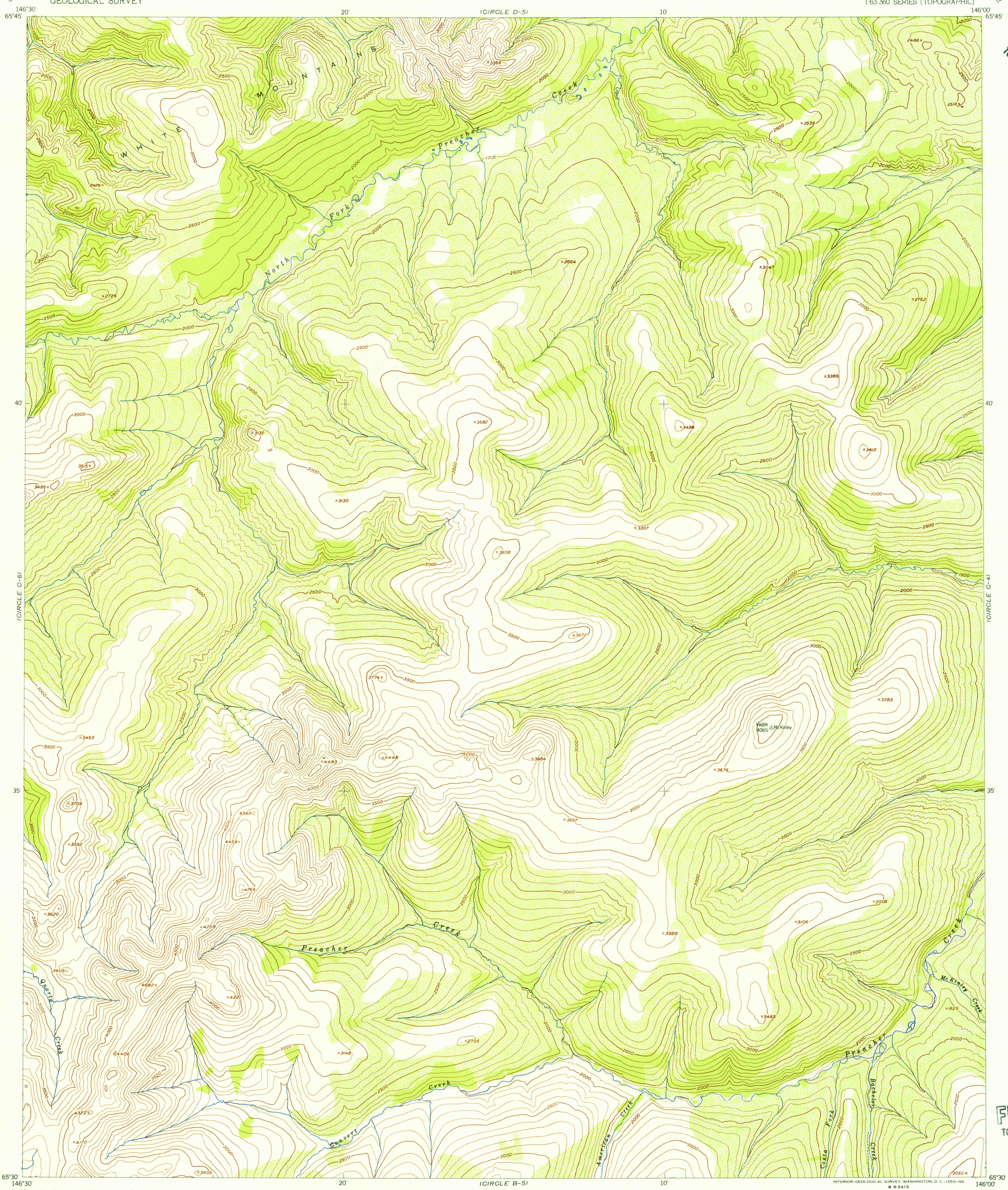
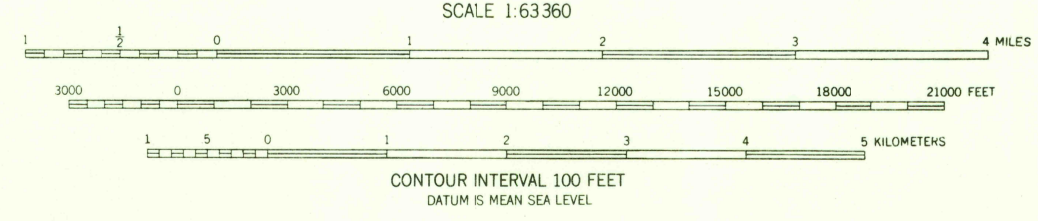
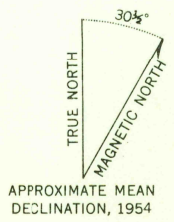


(CIRCLE D-4)
U.S.G.S.
FILE COPY
TOPOGRAPHIC DIVISION

U.S.G.S.
FILE COPY
TOPOGRAPHIC DIVISION



Maped, edited, and published by the Geological Survey
Control by USGS
Topography from aerial photographs by multiplex methods 1954
Aerial photographs taken 1951
Universal Transverse Mercator projection, zone 6
1927 North American datum
Unchecked elevations are shown in brown



ROAD CLASSIFICATION	
ALL WEATHER ROADS	DRY WEATHER ROADS
Hard-surface	None
Improved dirt	None
Other	None
Trails	None



USGS
Historical File
Topographic Division

CIRCLE (C-5), ALASKA
N6530—W14600/15X30
1954

FOR SALE BY U.S. GEOLOGICAL SURVEY
FAIRBANKS, ALASKA FEDERAL CENTER, DENVER, COLORADO WASHINGTON 25, D.C.
A FOLDER DESCRIBING TOPOGRAPHIC MAPS AND SYMBOLS IS AVAILABLE ON REQUEST

JAN 3 1956

2105