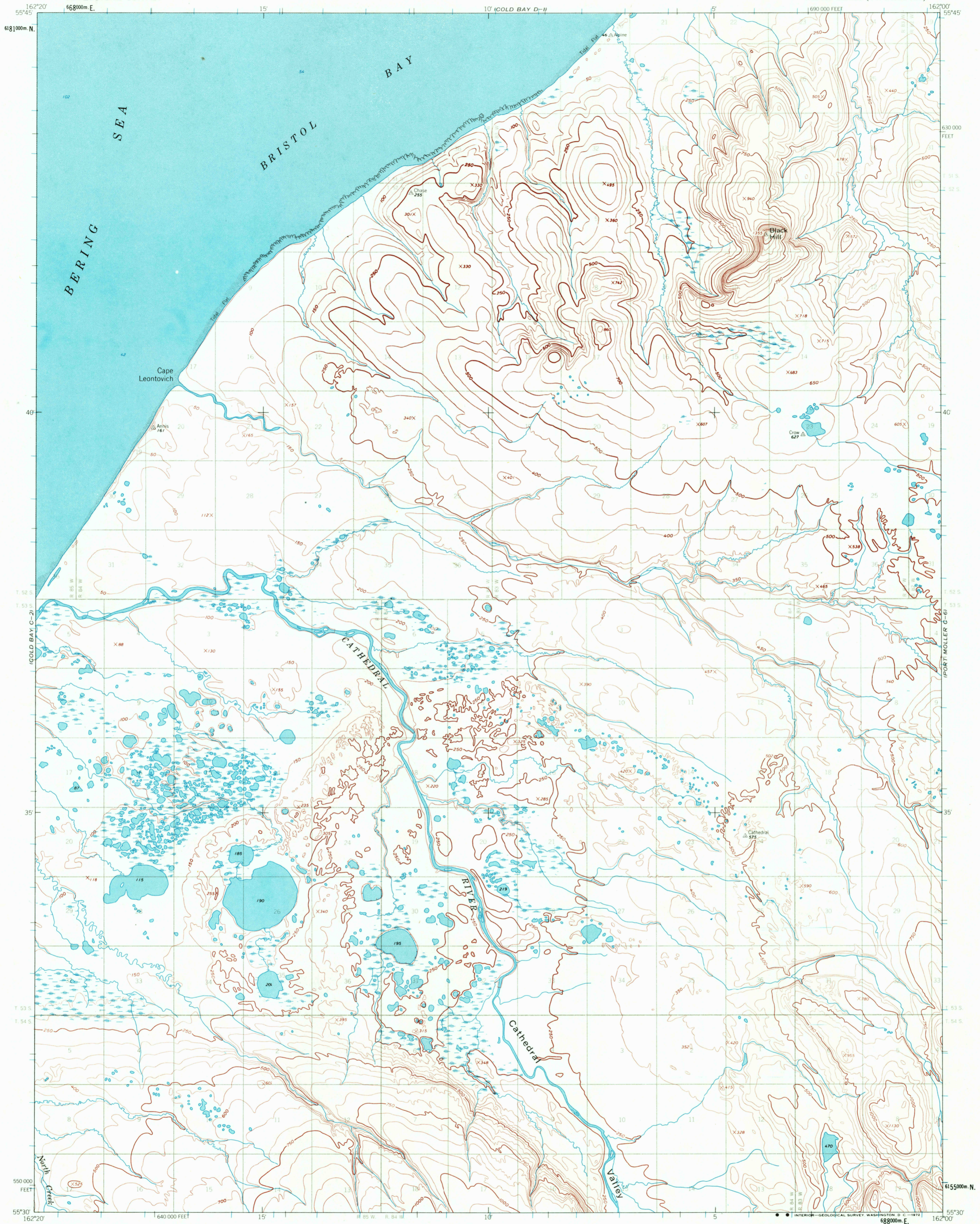


PORT MOLLER D-6



Mapped, edited, and published by the Geological Survey  
Control by USGS and USC&GS

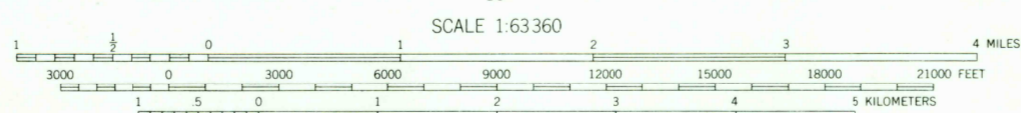
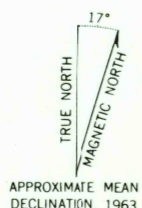
Topography by photogrammetric methods from aerial photographs  
taken 1962, field annotated 1963. Map not field checked

Selected hydrographic data compiled from USC&GS  
Chart 8802 (1965). This information is not intended  
for navigational purposes

Universal Transverse Mercator projection, 1927 North American datum  
10,000-foot grid based on Alaska coordinate system, zone 7  
1000-meter Universal Transverse Mercator grid ticks,  
zone 3, shown in blue

Land lines represent unsurveyed and unmarked locations  
predetermined by the Bureau of Land Management  
Folio S. 29, Seward Meridian

Swamps, as portrayed, indicate only the wetter areas,  
usually of low relief, as interpreted from aerial photographs  
Lake elevations are unchecked



CONTOUR INTERVAL 50 FEET

DATUM IS MEAN SEA LEVEL

SOUNDINGS IN FEET DATUM IS MEAN LOWER LOW WATER

SHORELINE SHOWN REPRESENTS THE APPROXIMATE LINE OF MEAN HIGH WATER  
THE MEAN RANGE OF TIDE IS APPROXIMATELY 5 FEET

FOR SALE BY U.S. GEOLOGICAL SURVEY  
FAIRBANKS, ALASKA 99701, DENVER, COLORADO 80225, OR WASHINGTON, D. C. 20242  
A FOLDER DESCRIBING TOPOGRAPHIC MAPS AND SYMBOLS IS AVAILABLE ON REQUEST



ROAD CLASSIFICATION  
No roads or trails in this area

COLD BAY (C-1), ALASKA  
N5530-W16200/15X20

1963

USGS  
HISTORICAL FILE  
TOPOGRAPHIC DIVISION

OCT 31 1972

2925