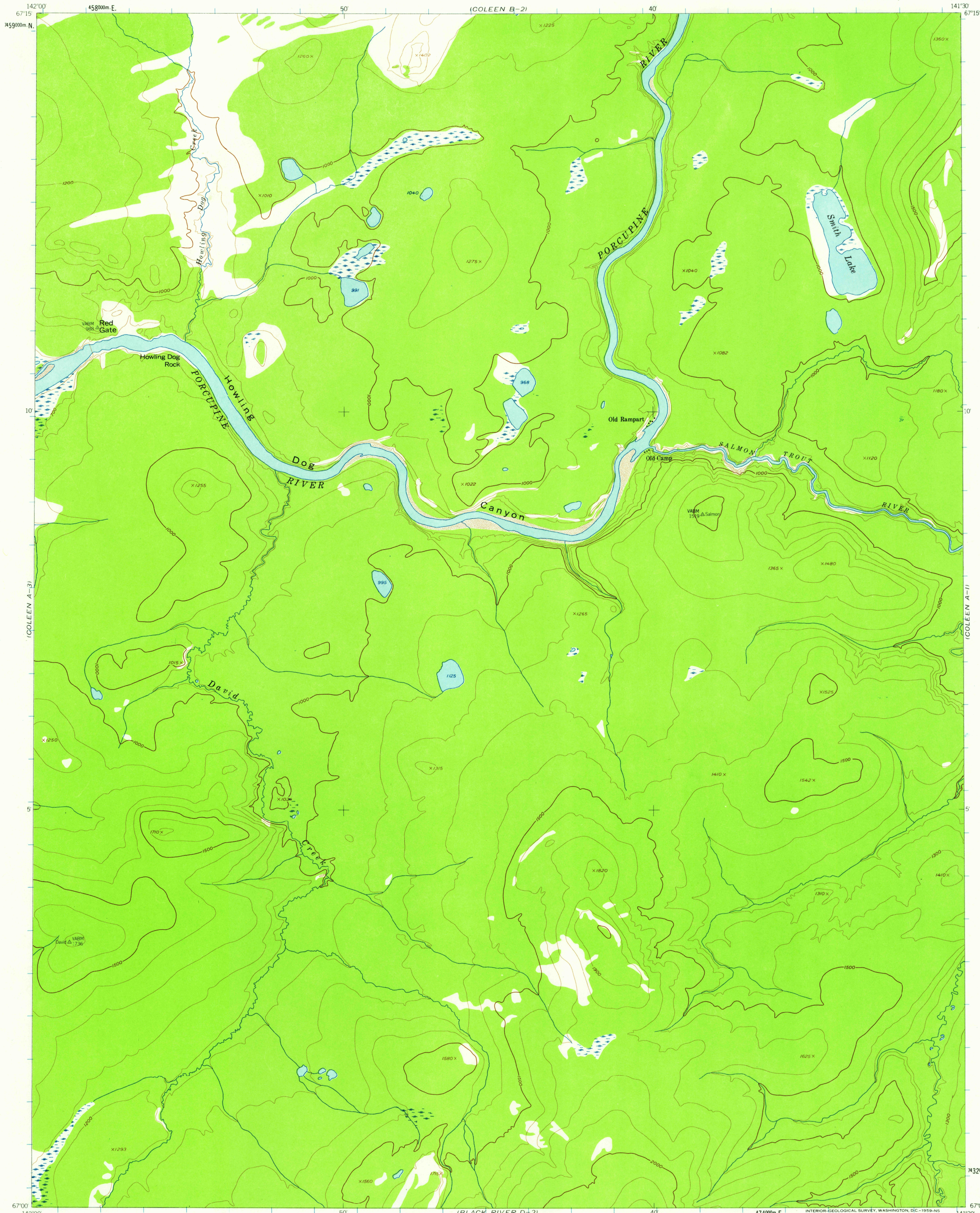


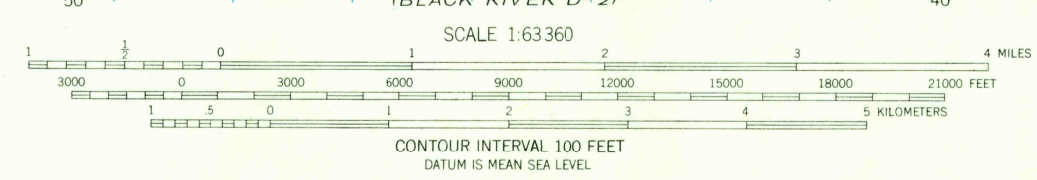
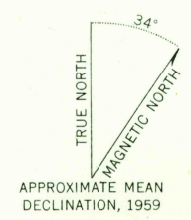
(COLEEN B-1)



(COLEEN A-3)

(COLEEN A-1)

142°00' 67°15' 459000m N
142°00' 67°00' 458000m E
Mapped, edited, and published by the Geological Survey
Control by USGS and USC&GS
Topography from aerial photographs by photogrammetric methods 1957. Aerial photographs taken 1955, field annotated 1956. Map not field checked
Universal Transverse Mercator projection
1927 North American datum
1000-meter Universal Transverse Mercator grid ticks, zone 7, shown in blue
Unchecked elevations are shown in brown and blue



USGS
Historical File
Topographic Division

U.S.G.S.
FILE COPY
TOPOGRAPHIC DIVISION

ROAD CLASSIFICATION
No roads or trails in this area

COLEEN (A-2), ALASKA
N6700-W14130/15X30
1956

FOR SALE BY U.S. GEOLOGICAL SURVEY
FAIRBANKS, ALASKA DENVER 2, COLORADO WASHINGTON 25, D.C.
A FOLDER DESCRIBING TOPOGRAPHIC MAPS AND SYMBOLS IS AVAILABLE ON REQUEST

MAR 25 1959
1853