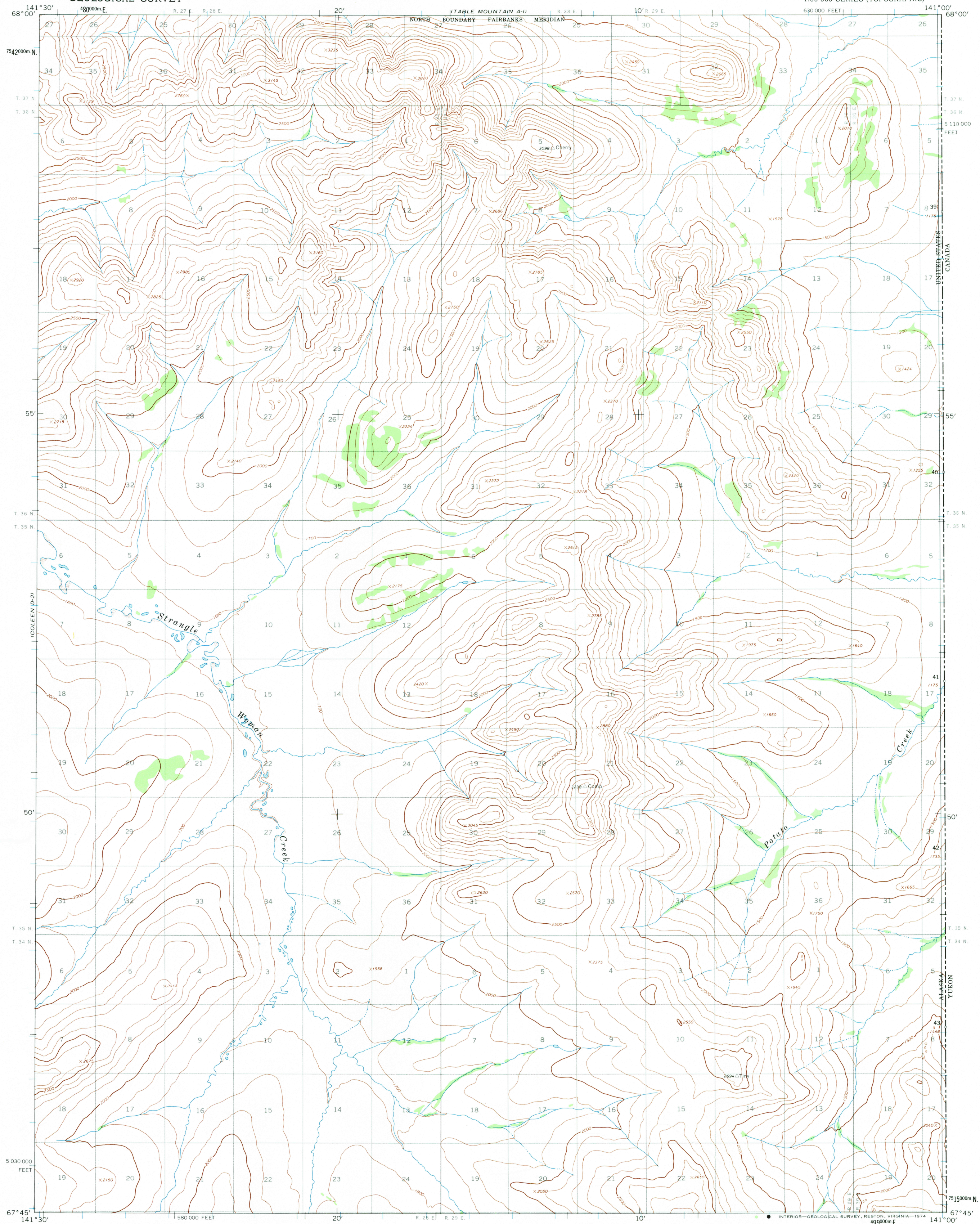
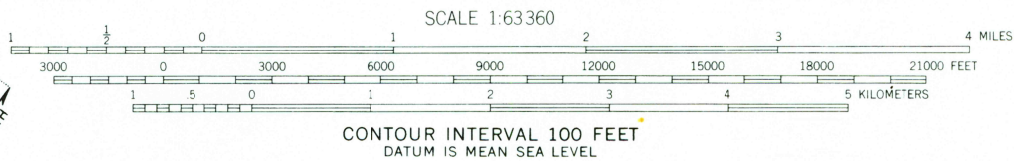
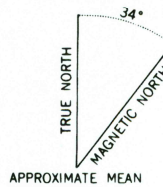


UNITED STATES  
DEPARTMENT OF THE INTERIOR  
GEOLOGICAL SURVEY

COLEEN (D-1) QUADRANGLE  
ALASKA  
1:63 360 SERIES (TOPOGRAPHIC)



Mapped, edited, and published by the Geological Survey  
Control by USGS, USC&GS, and International Boundary Commission  
Topography by photogrammetric methods from aerial photographs  
taken 1972, field annotated 1972. Map not field checked  
Projection and 1000-meter grid ticks: Universal  
Transverse Mercator, zone 7  
10,000-foot grid ticks based on Alaska coordinate  
system, zone 2. 1927 North American datum  
Land lines represent unsurveyed and unmarked locations  
predetermined by the Bureau of Land Management  
Folio F-1, Fairbanks Meridian



FOR SALE BY U.S. GEOLOGICAL SURVEY  
FAIRBANKS, ALASKA 99701, DENVER, COLORADO 80225, OR RESTON, VIRGINIA 22092  
A FOLDER DESCRIBING TOPOGRAPHIC MAPS AND SYMBOLS IS AVAILABLE ON REQUEST



ROAD CLASSIFICATION  
No roads or trails in this area

JUN 03 1974  
COLEEN (D-1), ALASKA  
N6745-W14100/15 X 30

USGS  
Historical File  
Topographic Division

1972

3990