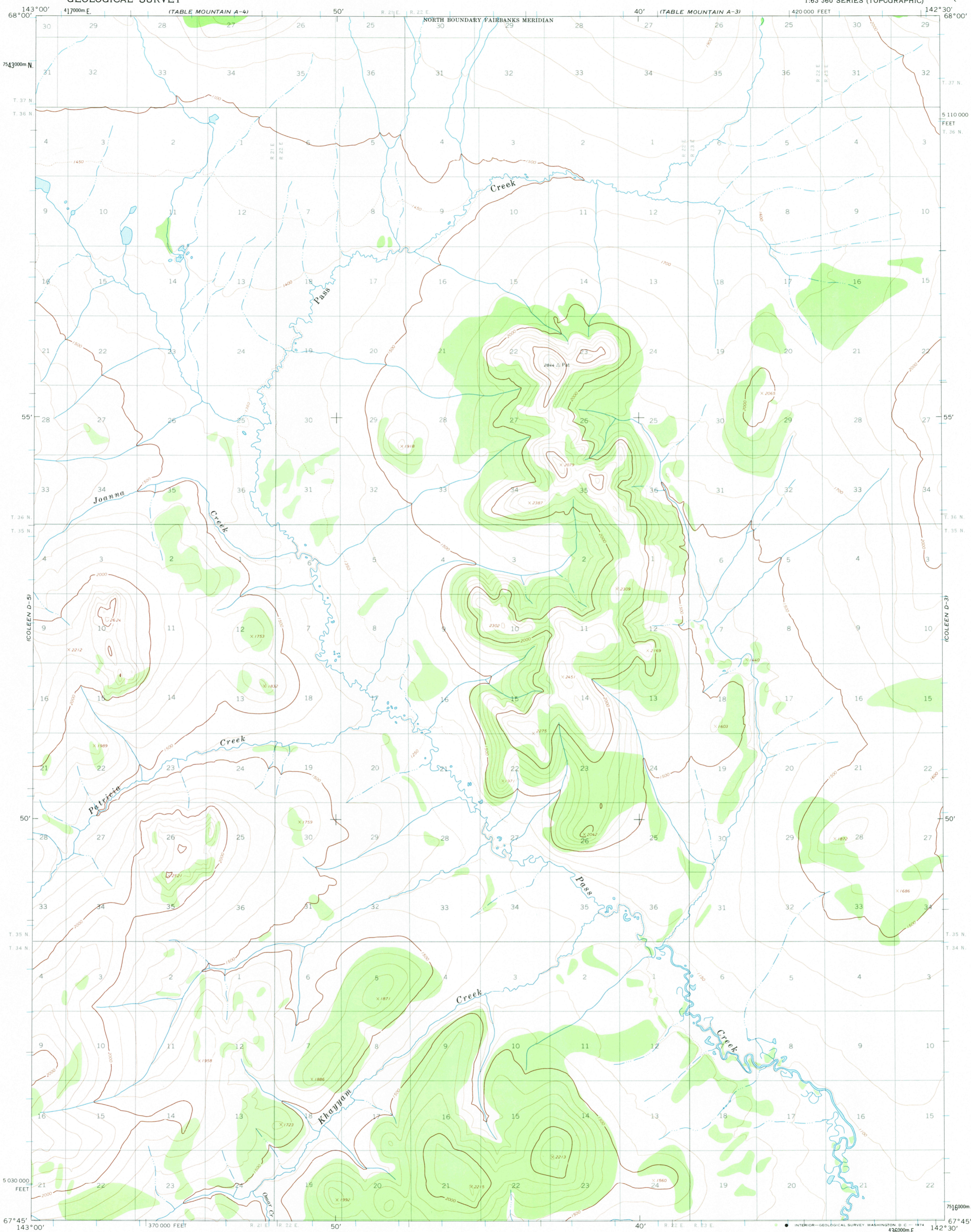


UNITED STATES
DEPARTMENT OF THE INTERIOR
GEOLOGICAL SURVEY

COLEEN (D-4) QUADRANGLE
ALASKA
1:63 360 SERIES (TOPOGRAPHIC)



Mapped, edited, and published by the Geological Survey

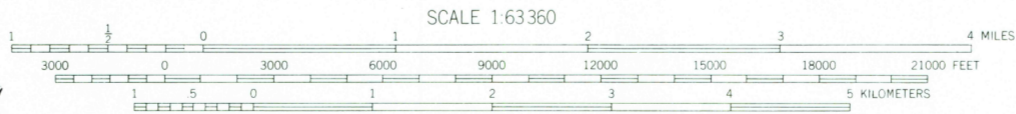
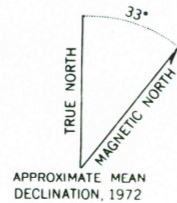
Control by USGS and USC&GS

Topography by photogrammetric methods from aerial photographs taken 1972, field annotated 1972. Map not field checked

Projection and 1,000-meter grid ticks: Universal Transverse Mercator, zone 7
10,000-foot grid ticks based on Alaska coordinate system, zone 2. 1927 North American datum

Land lines represent unsurveyed and unmarked locations predetermined by the Bureau of Land Management Folio F-1, Fairbanks Meridian

Swamps as portrayed, indicate only the wetter areas, usually of low relief, as interpreted from aerial photographs



SCALE 1:63 360
CONTOUR INTERVAL 100 FEET
DOTTED LINES REPRESENT 50-FOOT CONTOURS
DATUM IS MEAN SEA LEVEL



ROAD CLASSIFICATION
No roads or trails in this area

APR 25 1974

COLEEN (D-4), ALASKA
N6745-W14230/15 X30

1972

FOR SALE BY U.S. GEOLOGICAL SURVEY
FAIRBANKS, ALASKA 99701, DENVER, COLORADO 80225, OR WASHINGTON, D. C. 20242
A FOLDER DESCRIBING TOPOGRAPHIC MAPS AND SYMBOLS IS AVAILABLE ON REQUEST

USGS
Historical File
Topographic Division

3765