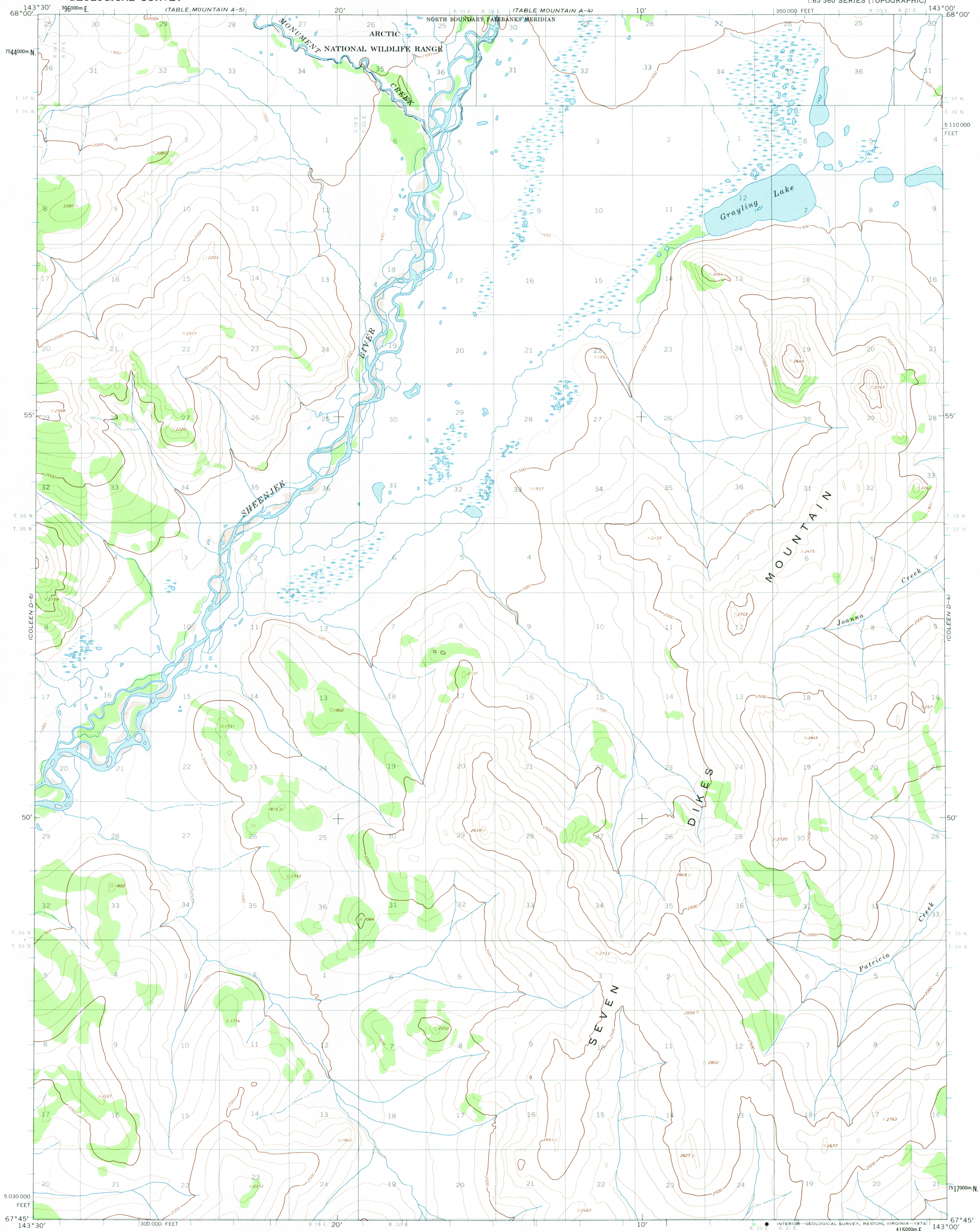


UNITED STATES
DEPARTMENT OF THE INTERIOR
GEOLOGICAL SURVEY

COLEEN (D-5) QUADRANGLE
ALASKA

1:63 360 SERIES (TOPOGRAPHIC)



Mapped, edited, and published by the Geological Survey

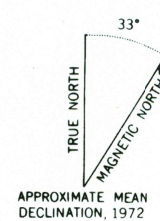
Control by USGS and USC&GS

Topography by photogrammetric methods from aerial photographs
taken 1972; field annotated 1972. Map not field checked

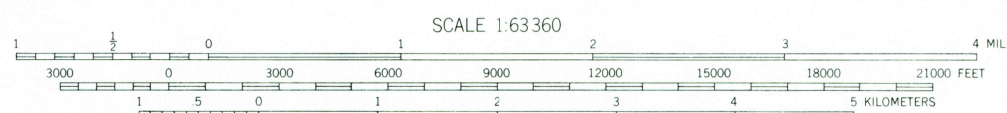
Projection and 1000-meter grid ticks: Universal
Transverse Mercator, zone 7
10,000-foot grid ticks based on Alaska coordinate
system, zone 2, 1927 North American datum

Land lines represent unsurveyed and unmarked locations
predetermined by the Bureau of Land Management
Folio F-1, Fairbanks Meridian

Swamps as portrayed, indicate only the wetter areas,
usually of low relief, as interpreted from aerial photographs



APPROXIMATE MEAN
MAGNETIC DECLINATION, 1972



CONTOUR INTERVAL 100 FEET
DOTTED LINES REPRESENT 50-FOOT CONTOURS
DATUM IS MEAN SEA LEVEL

FOR SALE BY U.S. GEOLOGICAL SURVEY
FAIRBANKS, ALASKA 99701, DENVER, COLORADO 80225, OR RESTON, VIRGINIA 22092
A FOLDER DESCRIBING TOPOGRAPHIC MAPS AND SYMBOLS IS AVAILABLE ON REQUEST

ROAD CLASSIFICATION
No roads or trails in this area

JUN 03 1974

COLEEN (D-5), ALASKA
N6745-W14300/15 X 30

1972



USGS
Historical File
Topographic Division

4075