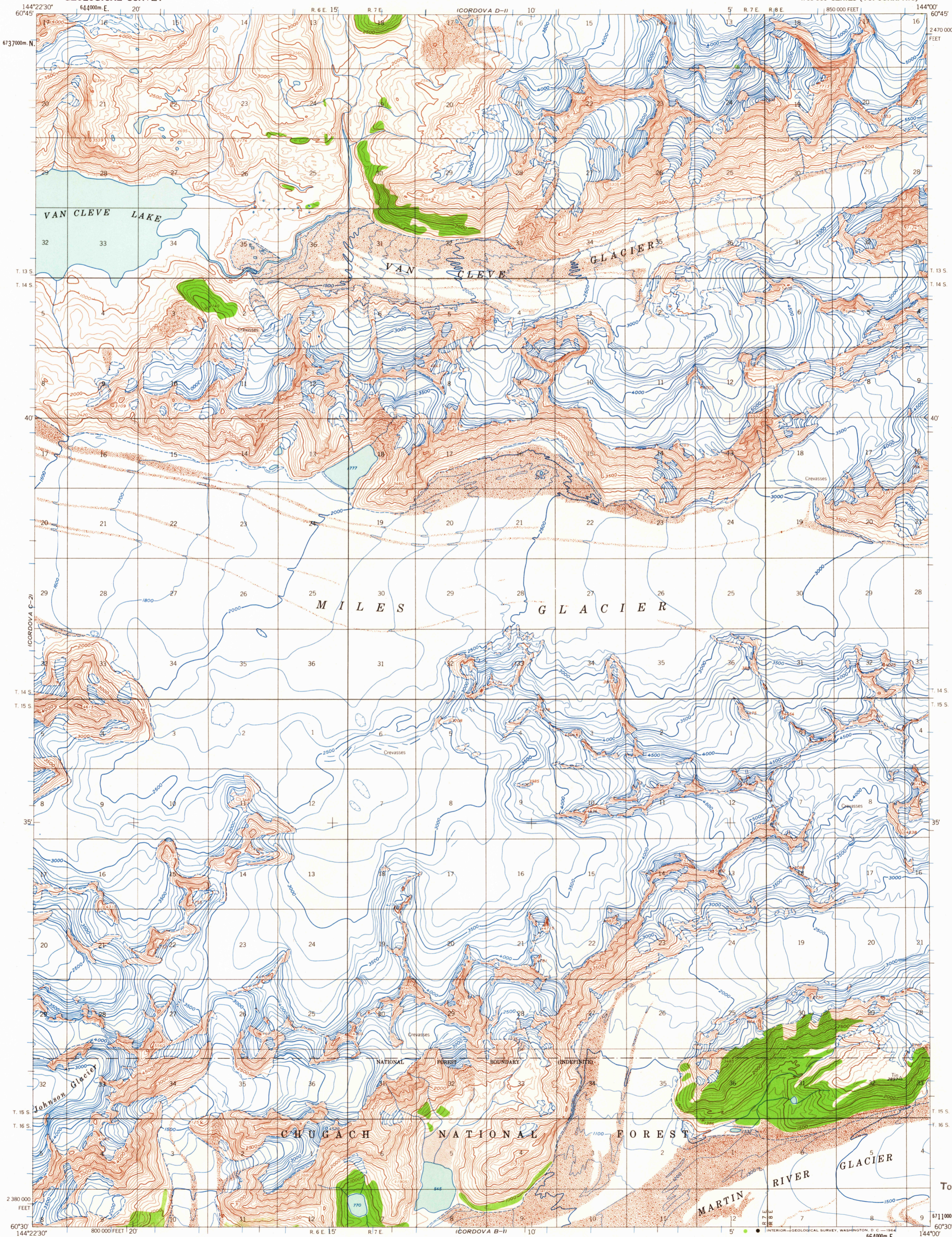


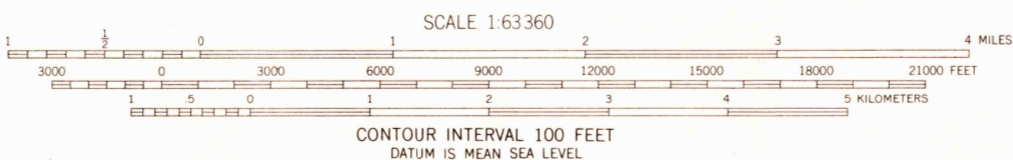
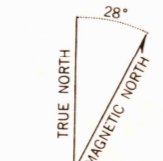
UNITED STATES  
DEPARTMENT OF THE INTERIOR  
GEOLOGICAL SURVEY

CORDOVA (C-1) QUADRANGLE  
ALASKA  
1:63 360 SERIES (TOPOGRAPHIC)

CORDOVA D-2  
CORDOVA C-1  
CORDOVA B-2



Mapped, edited, and published by the Geological Survey  
Control by USGS  
Topography by photogrammetric methods from aerial photographs taken 1950 and 1957, field annotated 1959. Map not field checked  
Universal Transverse Mercator projection, 1927 North American Datum 10,000-foot grid based on Alaska coordinate system, zone 3 1000-meter Universal Transverse Mercator grid ticks, zone 6, shown in blue  
Land lines represent unsurveyed and unmarked locations predetermined by the Bureau of Land Management  
Foto CR-5, Copper River Meridian



ROAD CLASSIFICATION  
No roads or trails in this area

FOR SALE BY U. S. GEOLOGICAL SURVEY  
FAIRBANKS, ALASKA DENVER 25, COLORADO WASHINGTON 25, D. C.  
A FOLDER DESCRIBING TOPOGRAPHIC MAPS AND SYMBOLS IS AVAILABLE ON REQUEST

CORDOVA (C-1), ALASKA  
N603C-W14400/15X22.5  
1959

USGS  
Historical File  
Topographic Division

USGS 2520  
COPY  
GRAPHIC DIVISION  
JUN 9 1964