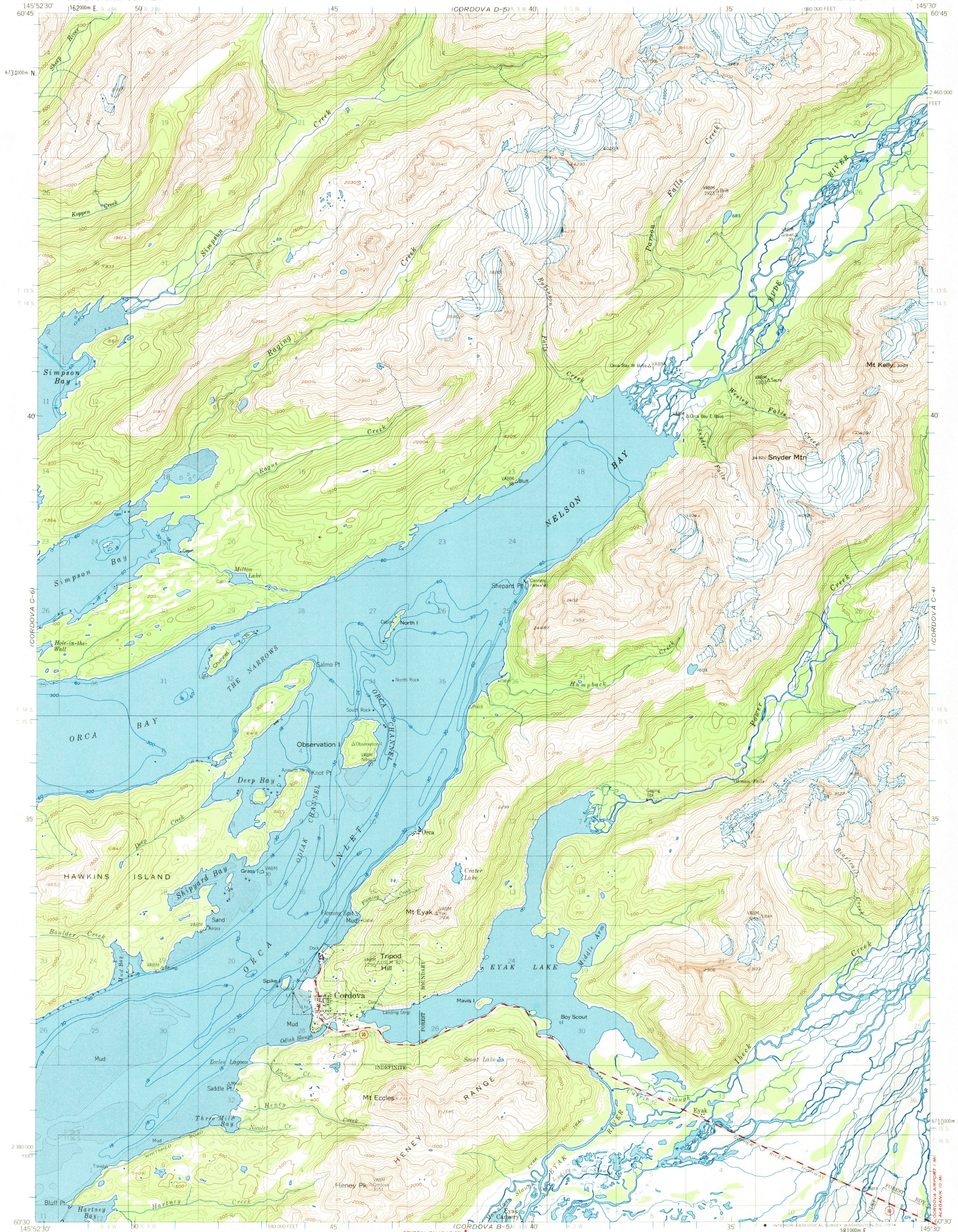


UNITED STATES
DEPARTMENT OF THE INTERIOR
GEOLOGICAL SURVEY

CORDOVA (C-5) QUADRANGLE
ALASKA
1:63 360 SERIES (TOPOGRAPHIC)



Mapped, edited, and published by the Geological Survey
Control by USGS and USC&GS

Topography by photogrammetric methods from aerial photographs
taken 1950, field annotated 1951. Map not field checked
Selected hydrographic data compiled from USC&GS
Charts 8520, 8525, and 8551 (1:200,000 scale)
This information is not intended for navigational purposes

Universal Transverse Mercator projection, 1927 North American datum
10,000-foot grid based on Alaska coordinate system; zone 3
1000-meter Universal Transverse Mercator grid ticks,
zone 6, shown in blue

Land lines represent unsurveyed and unmarked locations
predetermined by the Bureau of Land Management
Folio CR 5, Copper River Meridian

Entire land area is within the Chugach National Forest except
Cordova exclusion area and Cordova Airport withdrawal area
Swamps, as portrayed, indicate only the wetter areas,
usually of low relief, as interpreted from aerial photographs



APPROXIMATE MEAN
DECLINATION, 1951



FOR SALE BY U. S. GEOLOGICAL SURVEY
FAIRBANKS, ALASKA 99701, DENVER, COLORADO 80225, OR WASHINGTON, D. C. 20242
A FOLDER DESCRIBING TOPOGRAPHIC MAPS AND SYMBOLS IS AVAILABLE ON REQUEST



QUADRANGLE LOCATION

ROAD CLASSIFICATION
Medium-duty ——— Light-duty ———
Unimproved dirt ———
State Route —○—

CORDOVA (C-5), ALASKA
N6030—W14530/15225

1951
MINOR REVISIONS 1972

JAN 3 1 1974

2370