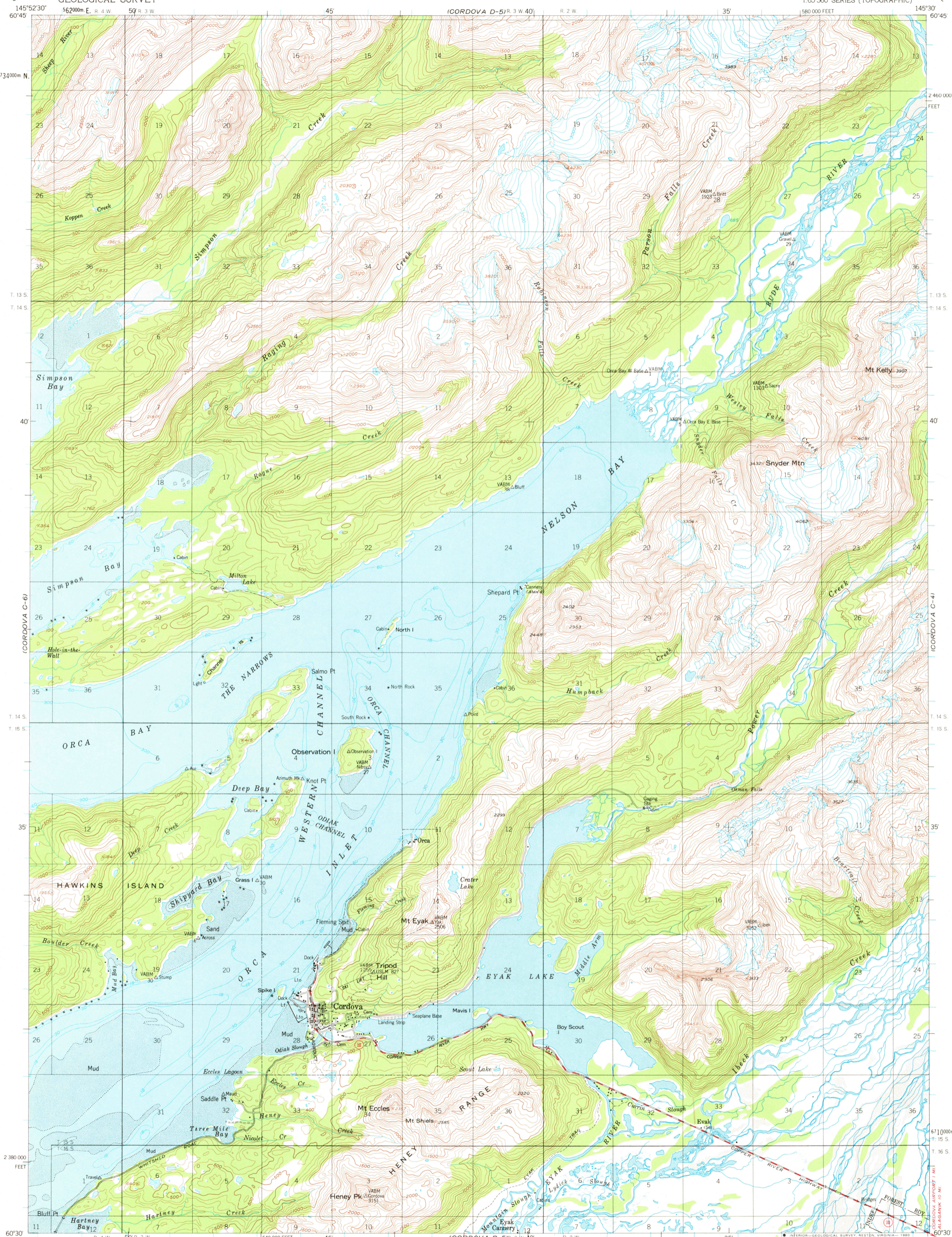


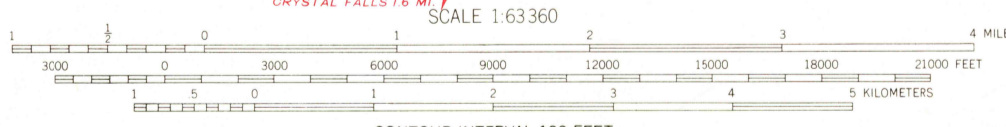
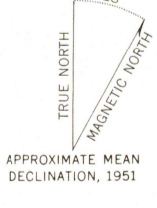
UNITED STATES
DEPARTMENT OF THE INTERIOR
GEOLOGICAL SURVEY

CORDOVA (C-5) QUADRANGLE
ALASKA
1:63 360 SERIES (TOPOGRAPHIC)



Mapped, edited, and published by the Geological Survey
Control by USGS and USC&GS
Topography by photogrammetric methods from aerial photographs
taken 1950, field annotated 1951. Map not field checked
Selected hydrographic data compiled from USC&GS
Charts 8520, 8525, and 8551 (1:200,000 scale)
This information is not intended for navigational purposes
Universal Transverse Mercator projection, 1927 North American datum
10,000-foot grid based on Alaska coordinate system, zone 3
1000-meter Universal Transverse Mercator grid ticks,
zone 6, shown in blue
Land lines represent unsurveyed and unmarked locations
predetermined by the Bureau of Land Management
Folio CR-5, Copper River Meridian
Entire land area is within the Chugach National Forest except
Cordova exclusion area and Cordova Airport withdrawal area
Swamps, as portrayed, indicate only the wetter areas,
usually of low relief, as interpreted from aerial photographs

There may be private inholdings within the boundaries of
the National or State reservations shown on this map
Lake elevations are unchecked



CONTOUR INTERVAL 100 FEET
NATIONAL GEODETIC VERTICAL DATUM OF 1929
DEPTH CURVES IN FEET-DATUM IS MEAN LOWER LOW WATER
SHORELINE SHOWN REPRESENTS THE APPROXIMATE LINE OF MEAN HIGH WATER
THE AVERAGE RANGE OF TIDE IS APPROXIMATELY 10 FEET
FOR SALE BY U. S. GEOLOGICAL SURVEY
FAIRBANKS, ALASKA 99701, DENVER, COLORADO 80225, OR RESTON, VIRGINIA 22092
A FOLDER DESCRIBING TOPOGRAPHIC MAPS AND SYMBOLS IS AVAILABLE ON REQUEST



ROAD CLASSIFICATION
Medium-duty ——— Light-duty ———
Unimproved dirt - - - - - State Route (circle)
1951
MINOR REVISIONS 1979

CORDOVA (C-5), ALASKA
N6030-W14530/15X22.5
1951
MINOR REVISIONS 1979

USGS
Historical File
Topographic Division

APR 18 1980

2400