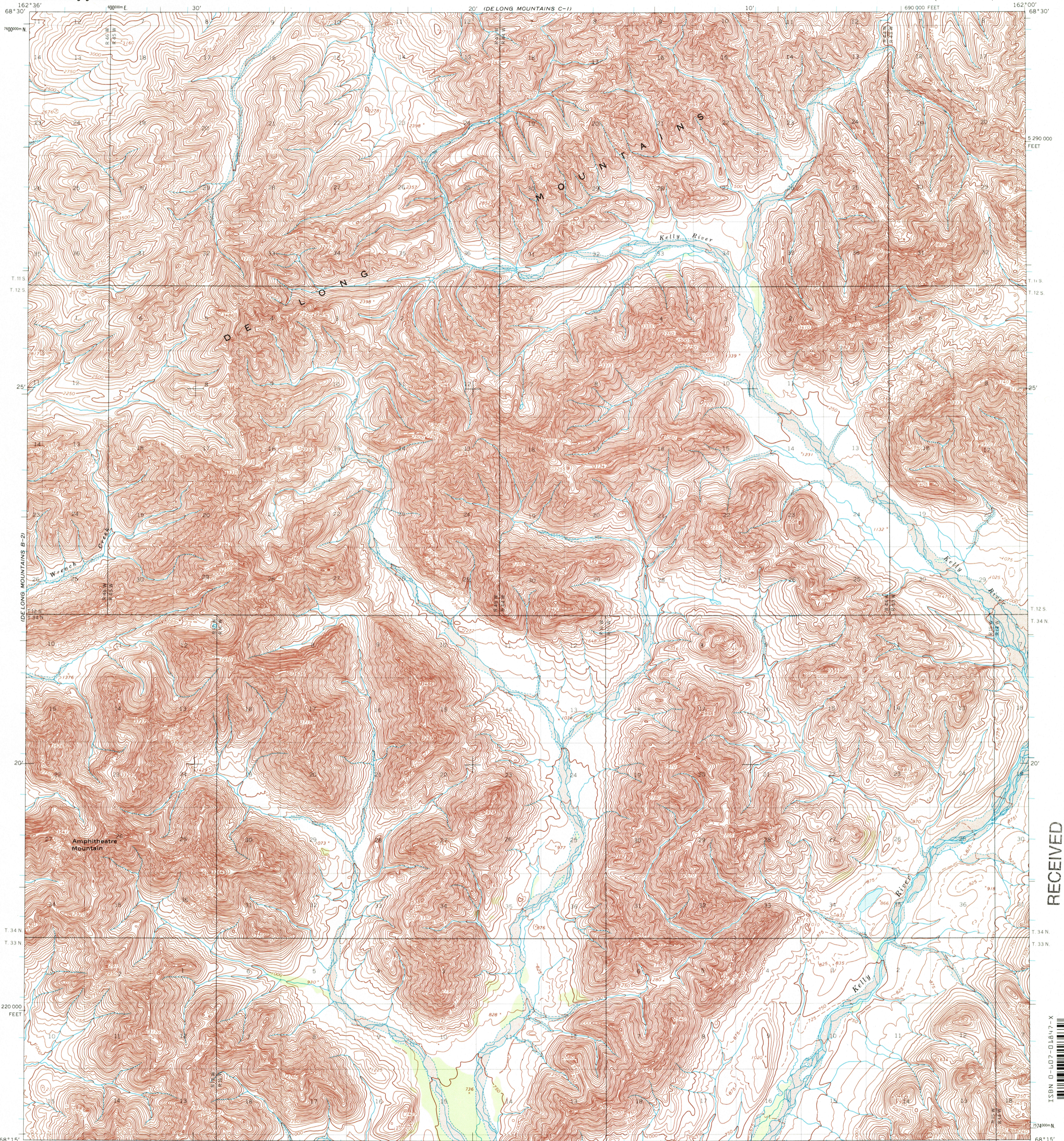




U.S. DEPARTMENT OF THE INTERIOR
U.S. GEOLOGICAL SURVEY

DE LONG MOUNTAINS (B-1) QUADRANGLE
ALASKA
1:63 360 SERIES (TOPOGRAPHIC)

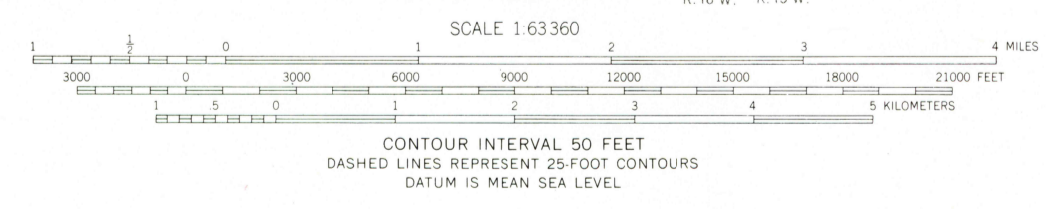
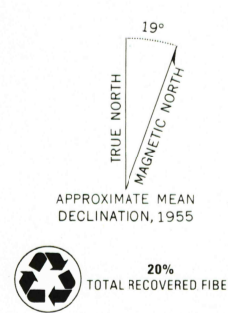


(DE LONG MTS C-2)
 (DE LONG MOUNTAINS B-2)
 (DE LONG MTS A-2)

RECEIVED
 JAN 31 2000
 USGS NW1J
 HISTORICAL MAP ARCHIVES



Mapped by the U.S. Army Topographic Command
 Published for civil use by the Geological Survey
 Control by USCGS and USCE
 Topography by photogrammetric methods from aerial photographs
 taken 1952-55, field annotated 1955. Map not field checked
 Universal Transverse Mercator projection. 1927 North American datum
 10,000-foot grid based on Alaska coordinate system, zone 7
 1000-meter Universal Transverse Mercator grid ticks, zone 3, shown in blue
 Land lines represent unsurveyed and unmarked locations predetermined
 by the Bureau of Land Management Folio U-B, Umiat Meridian, and
 Folios K-3 and K-4, Kateel River Meridian



ROAD CLASSIFICATION
 No roads or trails in this area

DE LONG MOUNTAINS (B-1), ALASKA
 N6815-W16200/15 X 36
 1955

FOR SALE BY U.S. GEOLOGICAL SURVEY, P.O. BOX 25286, DENVER, COLORADO 80225
 A FOLDER DESCRIBING TOPOGRAPHIC MAPS AND SYMBOLS IS AVAILABLE ON REQUEST

