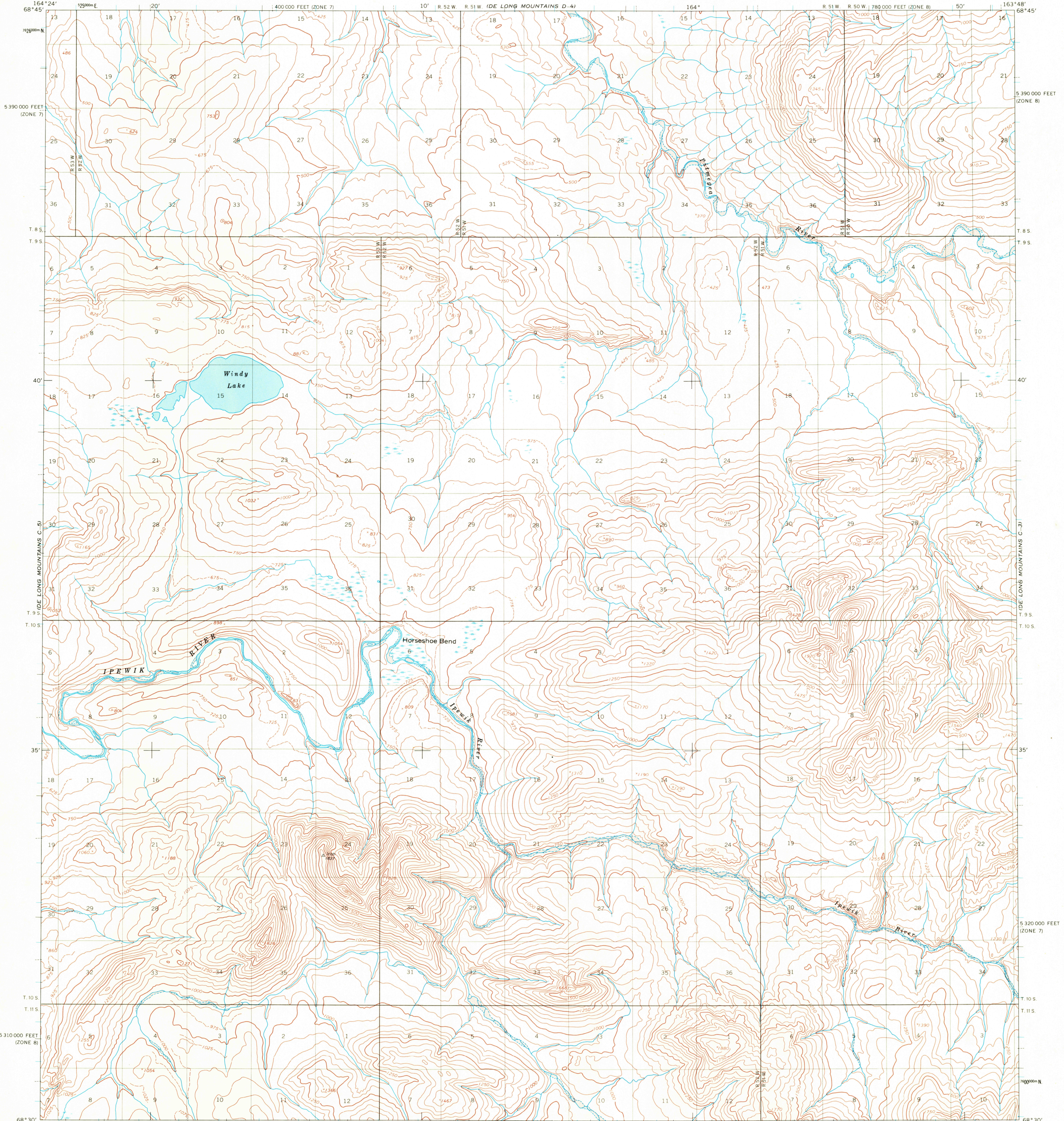
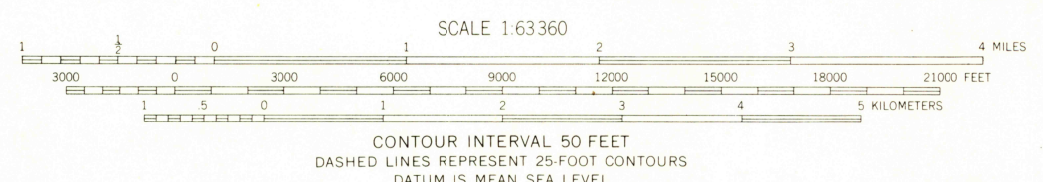
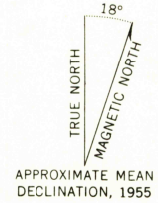


UNITED STATES  
DEPARTMENT OF THE INTERIOR  
GEOLOGICAL SURVEY

DE LONG MOUNTAINS (C-4) QUADRANGLE  
ALASKA  
1:63 360 SERIES (TOPOGRAPHIC)



Mapped by the U.S. Army Topographic Command  
Published for civil use by the Geological Survey  
Control by USCGS and USCE  
Topography by photogrammetric methods from aerial photographs  
taken 1952 and 1955, field annotated 1955. Map not field checked  
Universal Transverse Mercator projection, 1927 North American datum  
10,000-foot grids based on Alaska coordinate system, zones 8 and 7  
1000-meter Universal Transverse Mercator grid ticks, zone 3, shown in blue  
Land lines represent unsurveyed and unmarked locations predetermined  
by the Bureau of Land Management, Folio U-7, Umiat Meridian



USGS  
HISTORICAL FILE  
TOPOGRAPHIC DIVISION  
ROAD CLASSIFICATION  
No roads or trails in this area

FOR SALE BY U.S. GEOLOGICAL SURVEY  
FAIRBANKS, ALASKA 99701, DENVER, COLORADO 80225, OR WASHINGTON, D.C. 20242  
A FOLDER DESCRIBING TOPOGRAPHIC MAPS AND SYMBOLS IS AVAILABLE ON REQUEST

DE LONG MOUNTAINS (C-4), ALASKA  
N6830—W16348/15X36

1955  
USGS  
HISTORICAL FILE  
TOPOGRAPHIC  
AUG 2 1971