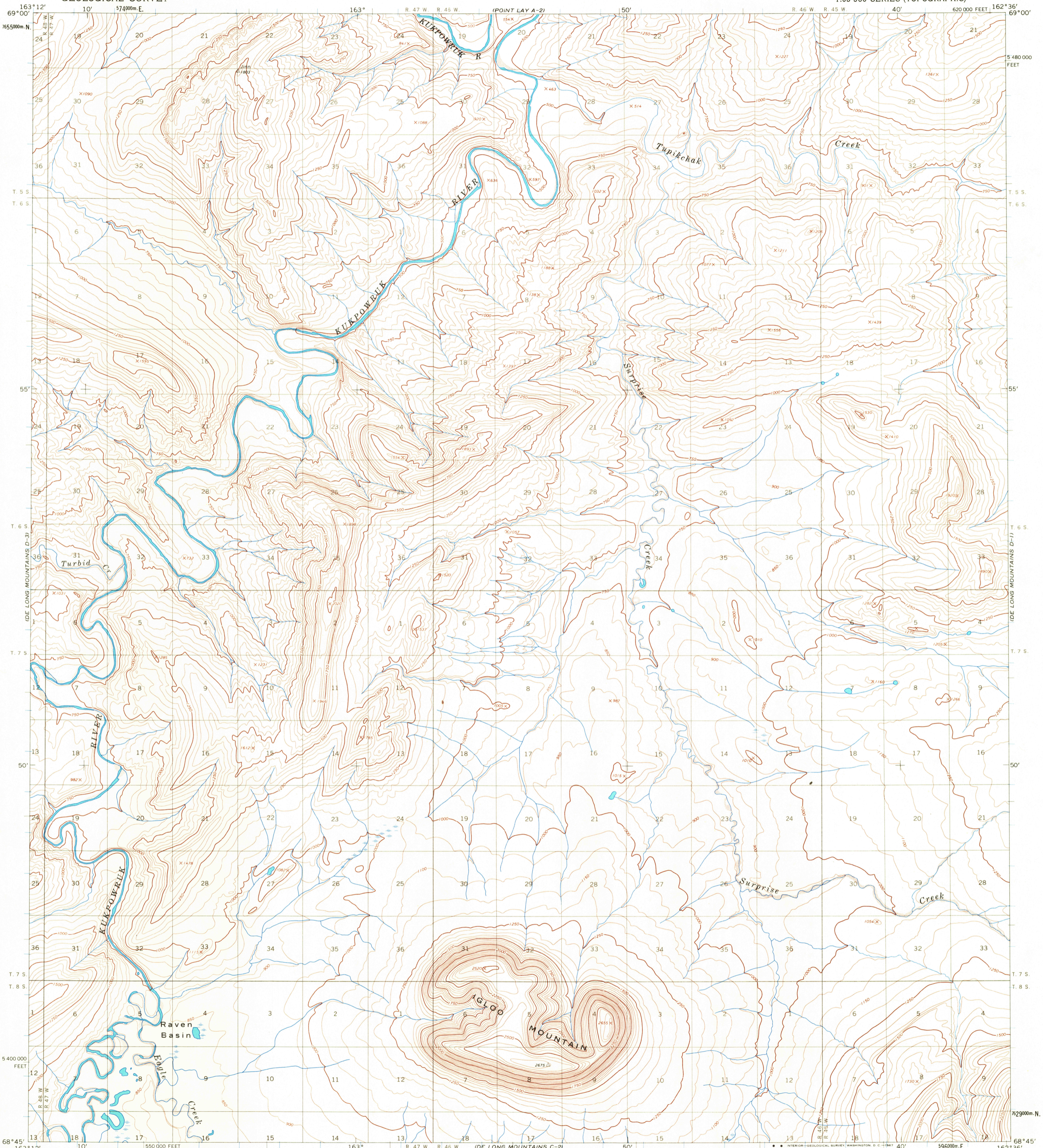
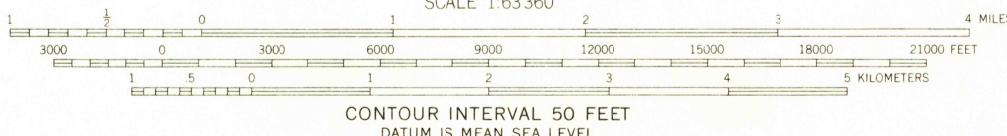


UNITED STATES
DEPARTMENT OF THE INTERIOR
GEOLOGICAL SURVEY

DE LONG MOUNTAINS (D-2) QUADRANGLE
ALASKA
1:63 360 SERIES (TOPOGRAPHIC)



Maped by the Army Map Service
Edited and published by the Geological Survey
Control by USC&GS and USCE
Topography by photogrammetric methods from aerial photographs
taken 1955, field annotated 1955. Map not field checked
Universal Transverse Mercator projection. 1927 North American datum
10,000-foot grid based on Alaska coordinate system, zone 7
1000 meter Universal Transverse Mercator grid ticks,
zone 3, shown in blue
Land lines represent unsurveyed and unmarked locations
predetermined by the Bureau of Land Management
Folio U-8, Umiat Meridian



USGS
Historical File
Topographic Division

ROAD CLASSIFICATION
No roads or trails in this area



FOR SALE BY U.S. GEOLOGICAL SURVEY
FAIRBANKS, ALASKA 99701, DENVER, COLORADO 80225, OR WASHINGTON, D.C. 20242
A FOLDER DESCRIBING TOPOGRAPHIC MAPS AND SYMBOLS IS AVAILABLE ON REQUEST

DE LONG MOUNTAINS (D-2), ALASKA
N6845—W16236/15 X 35

1955

2155