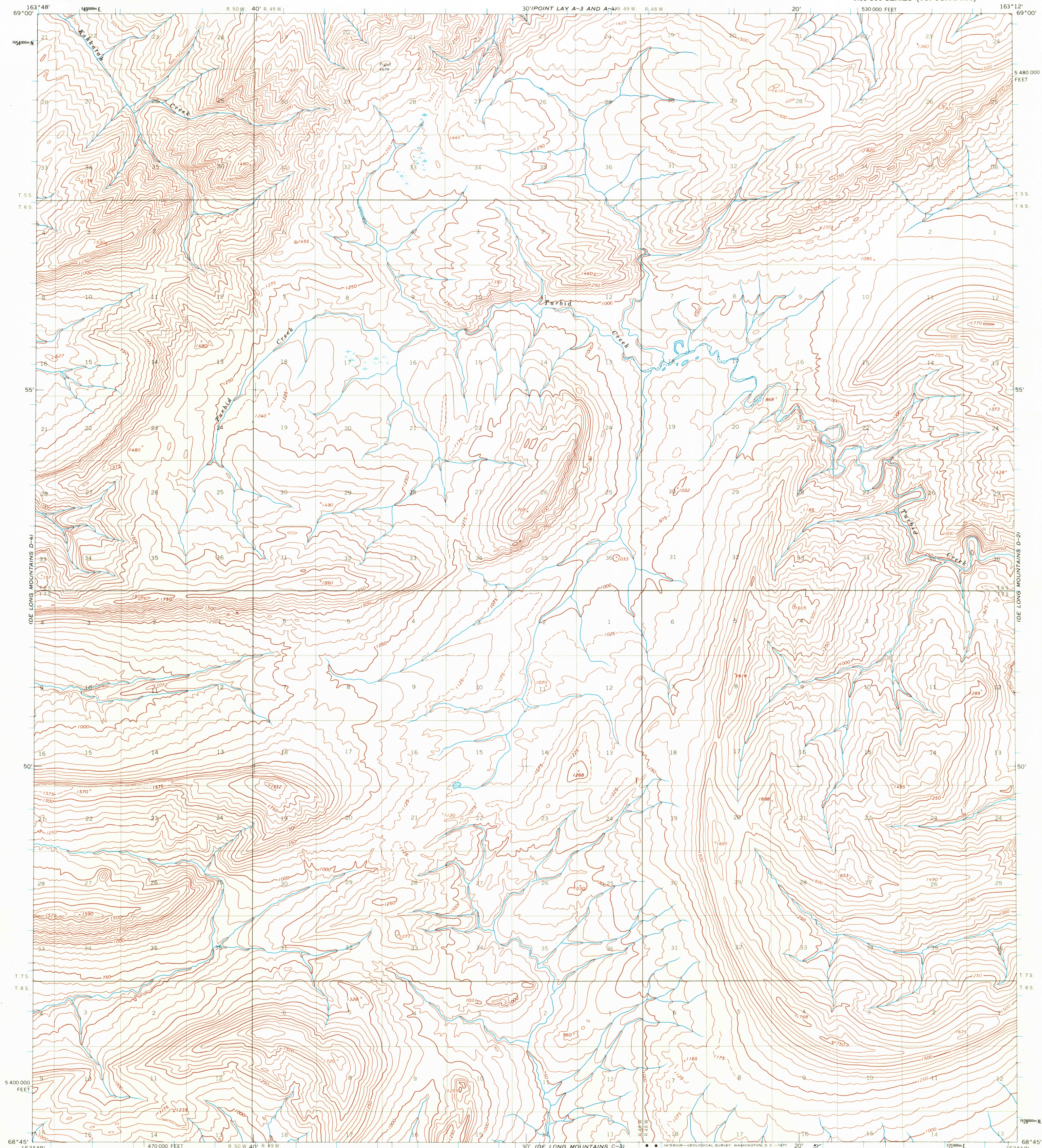


UNITED STATES
DEPARTMENT OF THE INTERIOR
GEOLOGICAL SURVEY

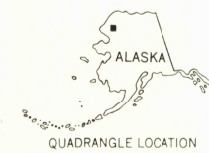
DE LONG MOUNTAINS (D-3) QUADRANGLE
ALASKA
1:63 360 SERIES (TOPOGRAPHIC)



Mapped by the U. S. Army Topographic Command
Published for civil use by the Geological Survey
Control by USC&GS and USCE
Topography by photogrammetric methods from aerial photographs
taken 1955, field annotated 1955. Map not field checked
Universal Transverse Mercator projection. 1927 North American datum
10,000-foot grid based on Alaska coordinate system, zone 7
1000-meter Universal Transverse Mercator grid ticks, zone 3, shown in blue
Land lines represent unsurveyed and unmarked locations predetermined
by the Bureau of Land Management, Folios U-7 and U-8, Umat Meridian

TRUE NORTH
MAGNETIC NORTH
APPROXIMATE MEAN
DECLINATION, 1955

SCALE 1:63360
0 3000 6000 9000 12000 15000 18000 21000 FEET
0 3 6 9 12 15 18 21 KILOMETERS
CONTOUR INTERVAL 50 FEET
DASHED LINES REPRESENT 25-FOOT CONTOURS
DATUM IS MEAN SEA LEVEL



U.S.G.S.
FILE COPY
TOPOGRAPHIC DIVISION
ROAD CLASSIFICATION
No roads or trails in this area

DE LONG MOUNTAINS (D-3), ALASKA
N6845—W16312/15 X 36

1955
Historical File
Topographic Division

JUN 4 1971

FOR SALE BY U. S. GEOLOGICAL SURVEY
FAIRBANKS, ALASKA 99701, DENVER, COLORADO 80225, OR WASHINGTON, D. C. 20242
A FOLDER DESCRIBING TOPOGRAPHIC MAPS AND SYMBOLS IS AVAILABLE ON REQUEST