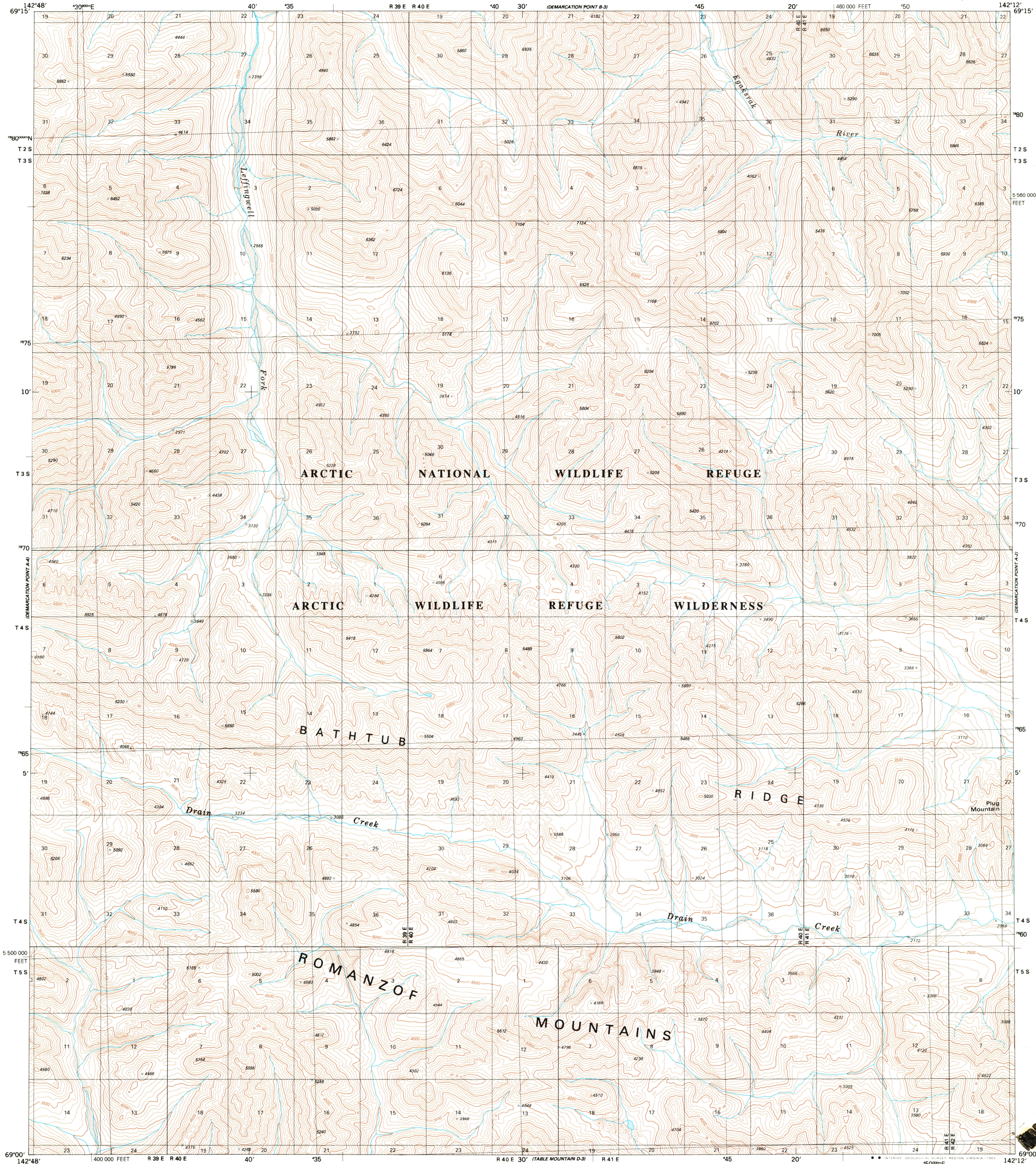
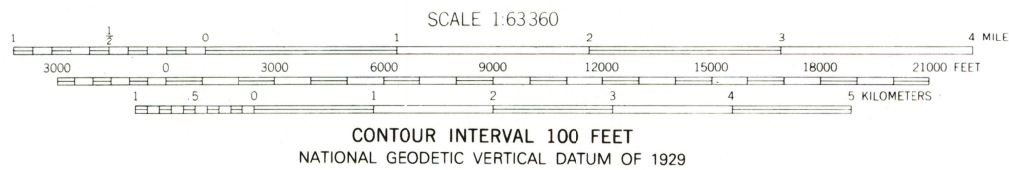
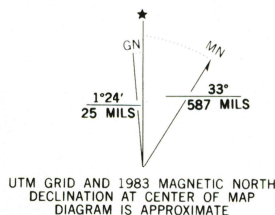


UNITED STATES
DEPARTMENT OF THE INTERIOR
GEOLOGICAL SURVEY

DEMARCATIION POINT (A-3) QUADRANGLE
ALASKA-NORTH SLOPE BOROUGH
1:63 360 SERIES (TOPOGRAPHIC)



Mapped, edited, and published by the Geological Survey
Control by USGS and NOS/NOAA
Topography by photogrammetric methods from aerial photographs
taken 1972. Map not field checked. Map edited 1983
Projection and 5000-meter grid
Universal Transverse Mercator, zone 7
20,000-foot grid ticks based on Alaska coordinate
system, zone 2. 1927 North American Datum
To place on the predicted North American Datum 1983 move
the projection lines 25 meters north and 108 meters east.
Land lines represent unsurveyed and unmarked locations
predetermined by the Bureau of Land Management
Folio U-13, Umat Meridian
There may be private inholdings within the boundaries of
the National or State reservations shown on this map



FOR SALE BY U. S. GEOLOGICAL SURVEY
FAIRBANKS, ALASKA 99701, DENVER, COLORADO 80225, OR RESTON, VIRGINIA 22092
A FOLDER DESCRIBING TOPOGRAPHIC MAPS AND SYMBOLS IS AVAILABLE ON REQUEST



DEMARCATIION POINT (A-3), ALASKA
N6900-W14212/15X36

1983