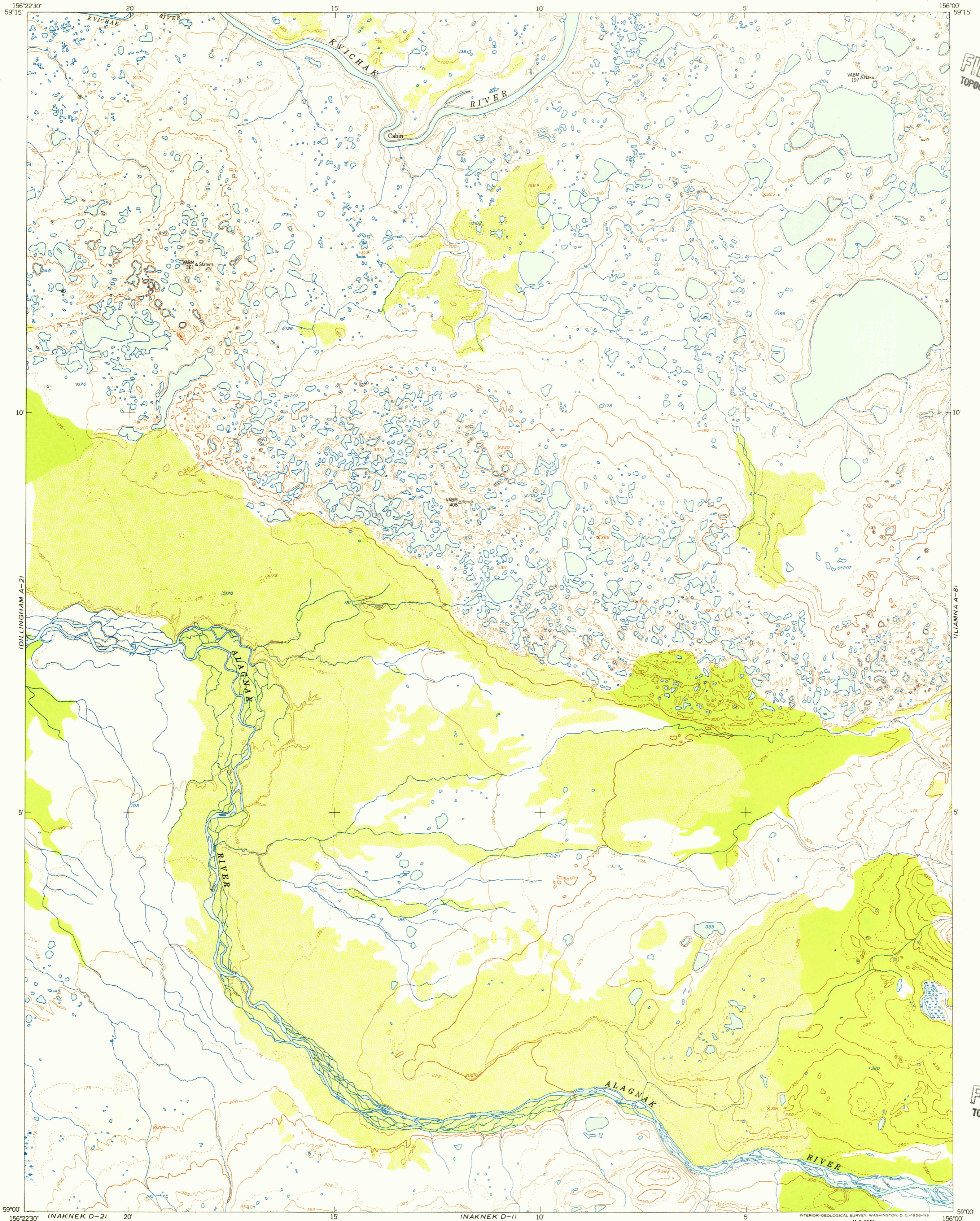
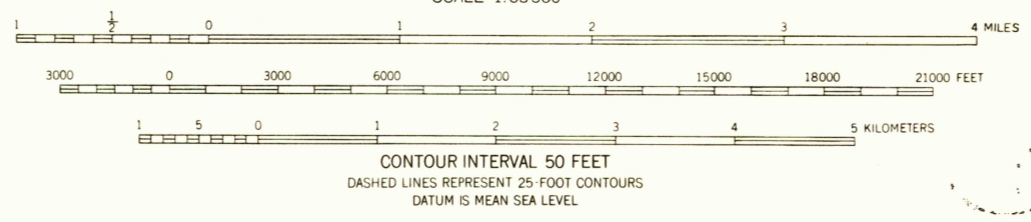
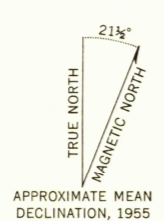


U.S.G.S.
FILE COPY
TOPOGRAPHIC DIVISION

U.S.G.S.
FILE COPY
TOPOGRAPHIC DIVISION



Mapped, edited, and published by the Geological Survey
Control by USC&GS and USCE
Topography from aerial photographs by multiplex methods 1955
Aerial photographs taken 1951. Map not field checked
Universal Transverse Mercator projection, zone 4
1927 North American datum
Unchecked elevations are shown in brown and blue



ROAD CLASSIFICATION

ALL WEATHER ROADS	DRY WEATHER ROADS
Hard-surface..... None	Improved dirt..... None
Other..... None	Unimproved dirt..... None
Trails..... None	



FOR SALE BY U.S. GEOLOGICAL SURVEY
FAIRBANKS, ALASKA FEDERAL CENTER, DENVER 2, COLORADO WASHINGTON 25, D. C.
A FOLDER DESCRIBING TOPOGRAPHIC MAPS AND SYMBOLS IS AVAILABLE ON REQUEST

USGS
Historical File
Topographic Division
DILLINGHAM (A-1), ALASKA
N5900—W15600/15X22.5
1951

AUG 1 1956
2060