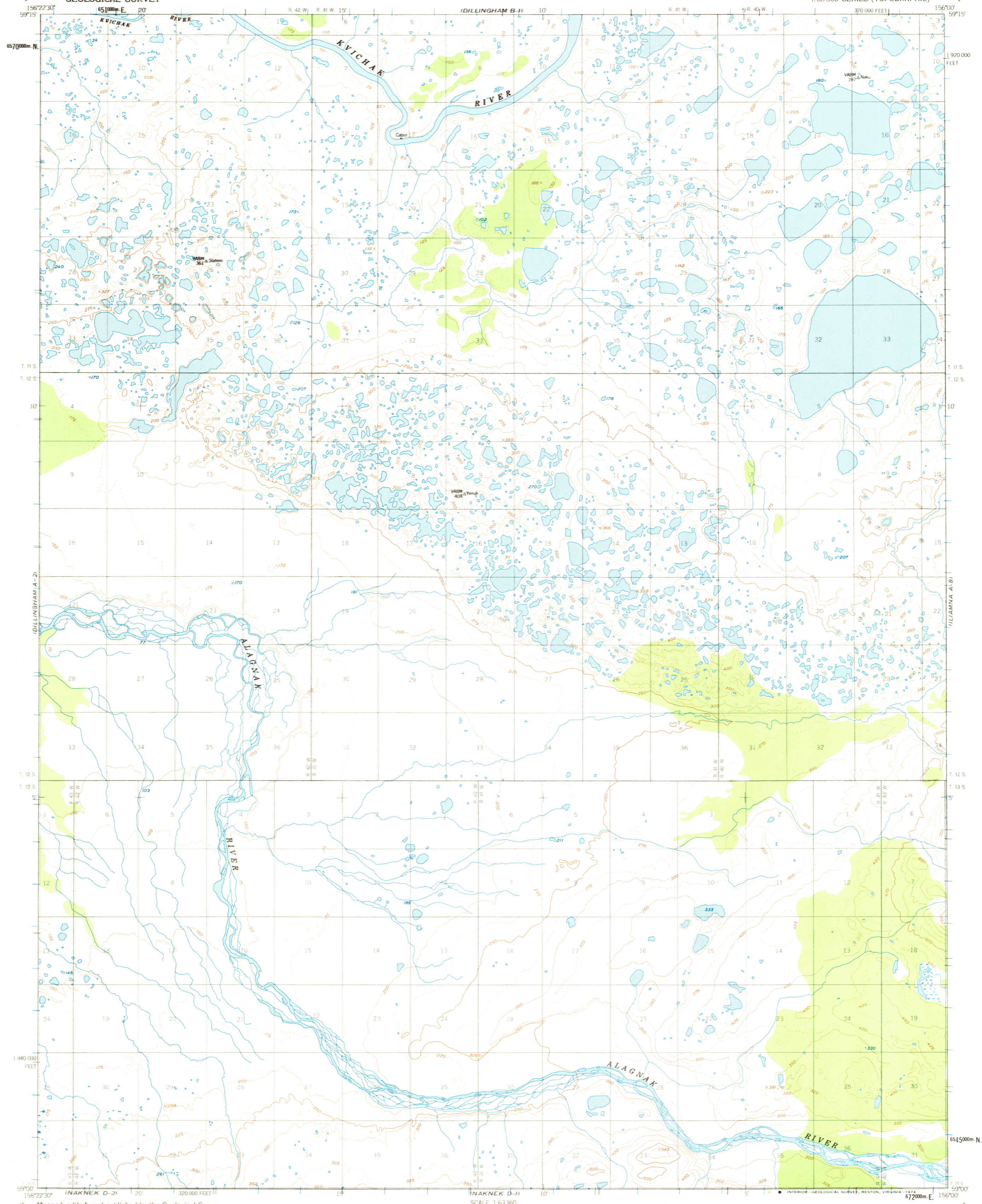


DILLINGHAM B-2

UNITED STATES  
DEPARTMENT OF THE INTERIOR  
GEOLOGICAL SURVEY

DILLINGHAM (A-1) QUADRANGLE  
ALASKA  
1:63 360 SERIES (TOPOGRAPHIC)

ILLIAMNA B-81



Mapped, edited, and published by the Geological Survey  
Control by USC&GS and USGS  
Topography by photogrammetric methods from aerial photographs  
taken 1951. Map not field checked.  
Universal Transverse Mercator projection, 1927 North American datum  
10,000-foot grid based on Alaska coordinate system, zone 6  
1000-meter Universal Transverse Mercator grid ticks,  
zone 4, shown in blue.  
Land lines represent unsurveyed and unmarked locations  
predetermined by the Bureau of Land Management  
Folio S-18, Seward Meridian  
Swamps, as portrayed, indicate only the wetter areas  
usually of low relief, as interpreted from aerial photographs.



CONTOUR INTERVAL 50 FEET  
DASHED LINES REPRESENT 20-FOOT CONTOURS  
NATIONAL GEODETIC VERTICAL DATUM OF 1929  
FOR SALE BY U. S. GEOLOGICAL SURVEY  
FAIRBANKS, ALASKA 99701, DENVER, COLORADO 80225, OR RESTON, VIRGINIA 22092  
A FOLDER DESCRIBING TOPOGRAPHIC MAPS AND SYMBOLS IS AVAILABLE ON REQUEST



ROAD CLASSIFICATION  
No roads or trails in this area

DILLINGHAM (A-1), ALASKA  
N5900 - W15600 / 15X22.5  
1951  
MINOR REVISIONS 1973

FEB 12 1975

USGS  
Historical File  
Topographic Division

1850