

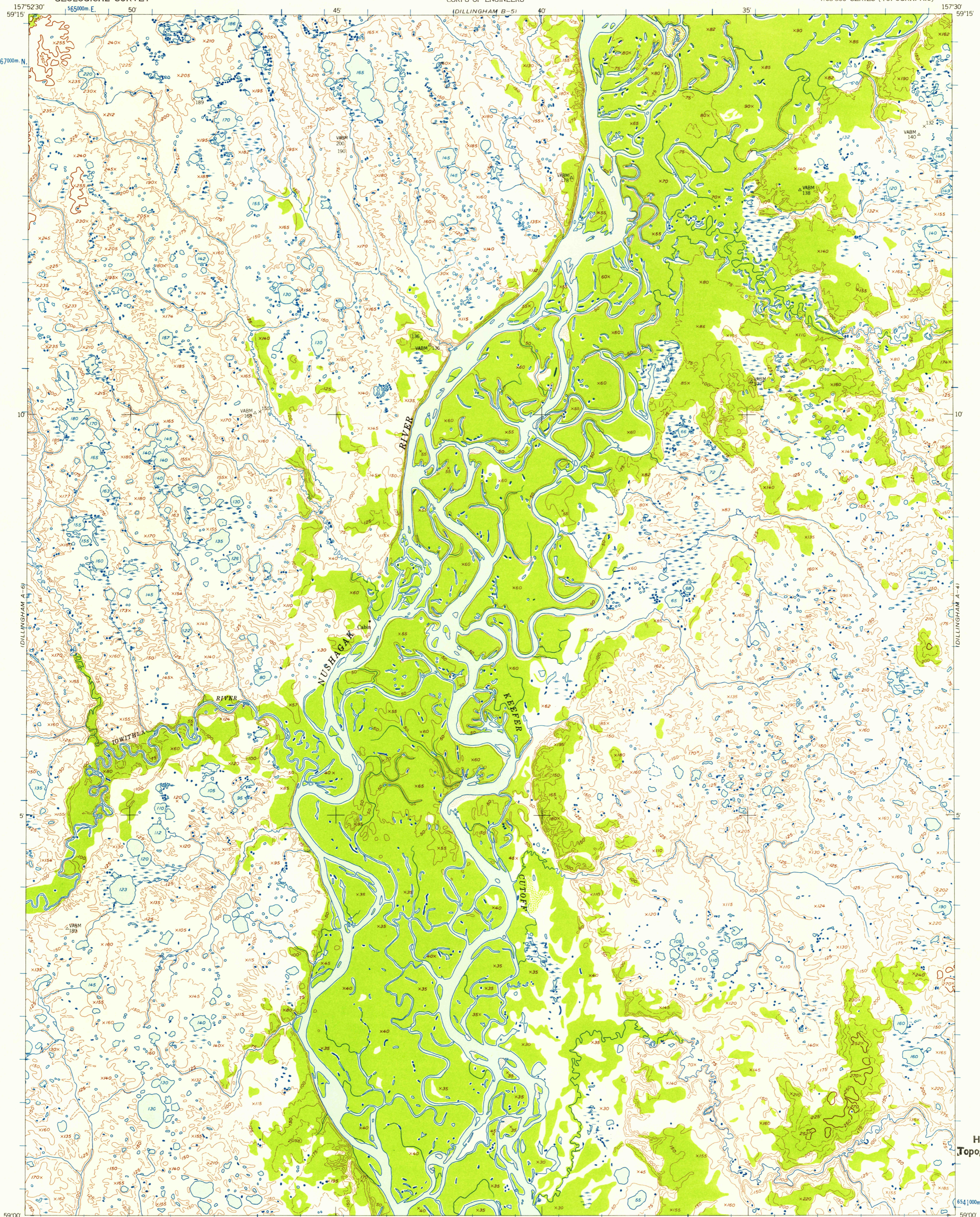
DILLINGHAM B-6

UNITED STATES  
DEPARTMENT OF THE INTERIOR  
GEOLOGICAL SURVEY

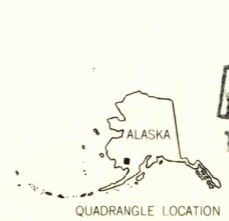
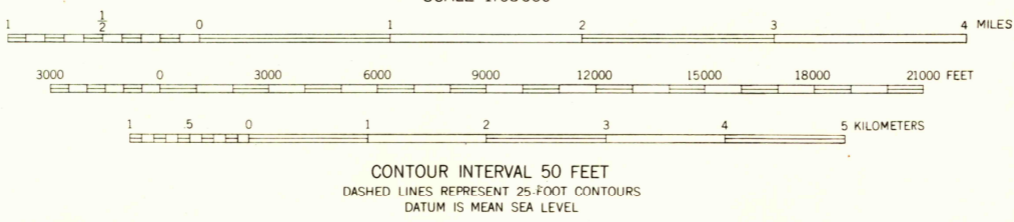
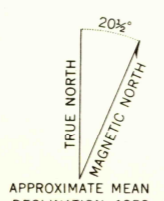
UNITED STATES  
DEPARTMENT OF THE ARMY  
CORPS OF ENGINEERS

DILLINGHAM (A-5) QUADRANGLE  
ALASKA—THIRD JUDICIAL DIVISION  
1:63 360 SERIES (TOPOGRAPHIC)

DILLINGHAM B-4



Mapped by the Army Map Service  
 Published for civil use by the Geological Survey  
 Control by USC&GS and USCE  
 Topography from aerial photographs by photogrammetric methods  
 Aerial photographs taken 1951. Field check 1952  
 Universal Transverse Mercator projection  
 1927 North American datum  
 1000 meter Universal Transverse Mercator grid ticks,  
 zone 4, shown in blue  
 Unchecked elevations are shown in brown and blue



**U.S.G.S.**  
**FILE COPY**  
 TOPOGRAPHIC DIVISION

ROAD CLASSIFICATION  
 No roads or trails in this area

DILLINGHAM (A-5), ALASKA  
 N5900—W15730/15X22.5

APR 11 1958

FOR SALE BY U.S. GEOLOGICAL SURVEY  
 FAIRBANKS, ALASKA DENVER 2, COLORADO WASHINGTON 25, D.C.  
 A FOLDER DESCRIBING TOPOGRAPHIC MAPS AND SYMBOLS IS AVAILABLE ON REQUEST

1952

1925

NAKNEK D-6

NAKNEK D-5

USCS  
 Historical File  
 Topographic Division