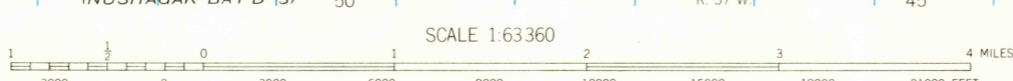
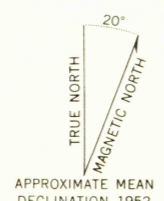


USGS  
Historical File  
Topographic Division

INUSHAGAK BAY D-41  
Mapped by the Army Map Service  
Published for civil use by the Geological Survey  
Control by USC&GS, and USCE  
Topography from USC&GS compilation manuscript T9040 (1950),  
and by photogrammetric methods from aerial photographs taken  
1951. Field annotated 1952. Map not field checked.  
Selected hydrographic data compiled from USC&GS chart 9052  
(1950). This information is not intended for navigational purposes  
Universal Transverse Mercator projection  
1927 North American datum  
1000-meter Universal Transverse Mercator grid ticks,  
zone 4, shown in blue  
Land lines represent unsurveyed and unmarked locations  
predetermined by the Bureau of Land Management  
Folio S-19, Seward Meridian  
Lake elevations are unchecked



SCALE 1:63 360  
CONTOUR INTERVAL 50 FEET  
DASHED LINES REPRESENT 25-FOOT CONTOURS  
DATUM IS APPROXIMATE MEAN SEA LEVEL  
SOUNDINGS IN FEET DATUM IS MEAN LOWER LOW WATER  
SHORELINE SHOWN REPRESENTS THE APPROXIMATE LINE OF MEAN HIGH WATER  
THE MEAN RANGE OF TIDE IS APPROXIMATELY 10 FEET



FOR SALE BY U.S. GEOLOGICAL SURVEY  
FAIRBANKS, ALASKA, DENVER 25, COLORADO OR WASHINGTON 25, D.C.  
A FOLDER DESCRIBING TOPOGRAPHIC MAPS AND SYMBOLS IS AVAILABLE ON REQUEST

ROAD CLASSIFICATION  
No roads or trails in this area

DILLINGHAM (A-8), ALASKA  
N5900-W15837.5/15X22.5

1952

MAP - 5 1963

2695