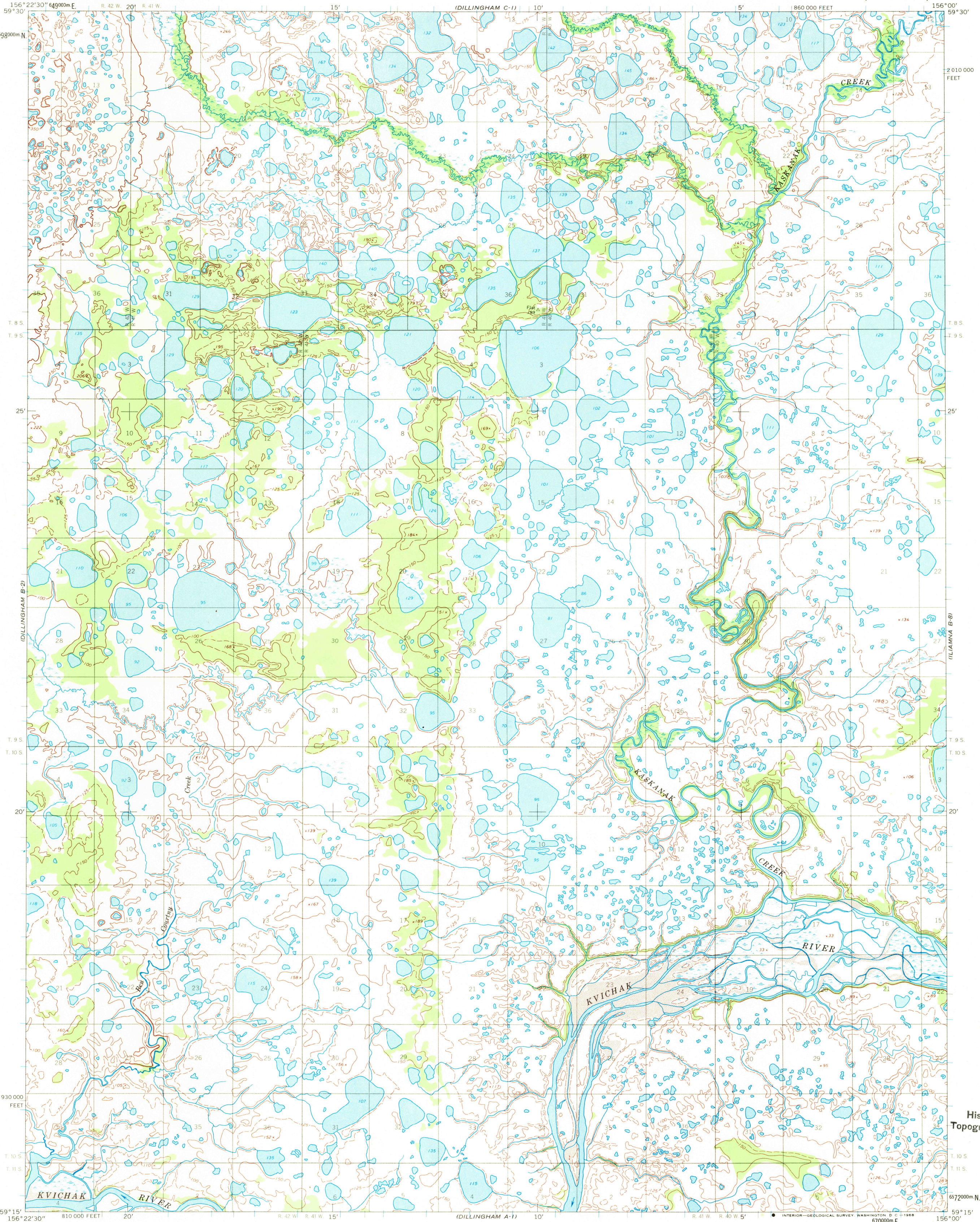


UNITED STATES  
DEPARTMENT OF THE INTERIOR  
GEOLOGICAL SURVEY

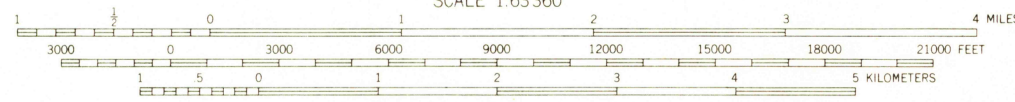
DILLINGHAM (B-1) QUADRANGLE  
ALASKA  
1:63 360 SERIES (TOPOGRAPHIC)



Mapped by the Army Map Service  
Edited and published by the Geological Survey  
Control by USC&GS and USCE

Topography by photogrammetric methods from aerial photographs  
taken 1955, field annotated 1954. Map not field checked  
Universal Transverse Mercator projection. 1927 North American datum  
10,000-foot grid based on Alaska coordinate system, zone 6  
1000-meter Universal Transverse Mercator grid ticks,  
zone 4, shown in blue

Land lines represent unsurveyed and unmarked locations  
predetermined by the Bureau of Land Management  
Folio S-18, Seward Meridian



CONTOUR INTERVAL 50 FEET  
DASHED LINES REPRESENT 25-FOOT CONTOURS  
DATUM IS MEAN SEA LEVEL

U.S.G.S.  
ALASKA  
**FILE COPY**  
TOPOGRAPHIC DIVISION

ROAD CLASSIFICATION  
No roads or trails in this area

FOR SALE BY U.S. GEOLOGICAL SURVEY  
FAIRBANKS, ALASKA, 99701, DENVER, COLORADO 80225, OR WASHINGTON, D.C. 20242  
A FOLDER DESCRIBING TOPOGRAPHIC MAPS AND SYMBOLS IS AVAILABLE ON REQUEST

DILLINGHAM (B-1), ALASKA  
N5915—W15600/15X22.5

1954

MAY 19 '69