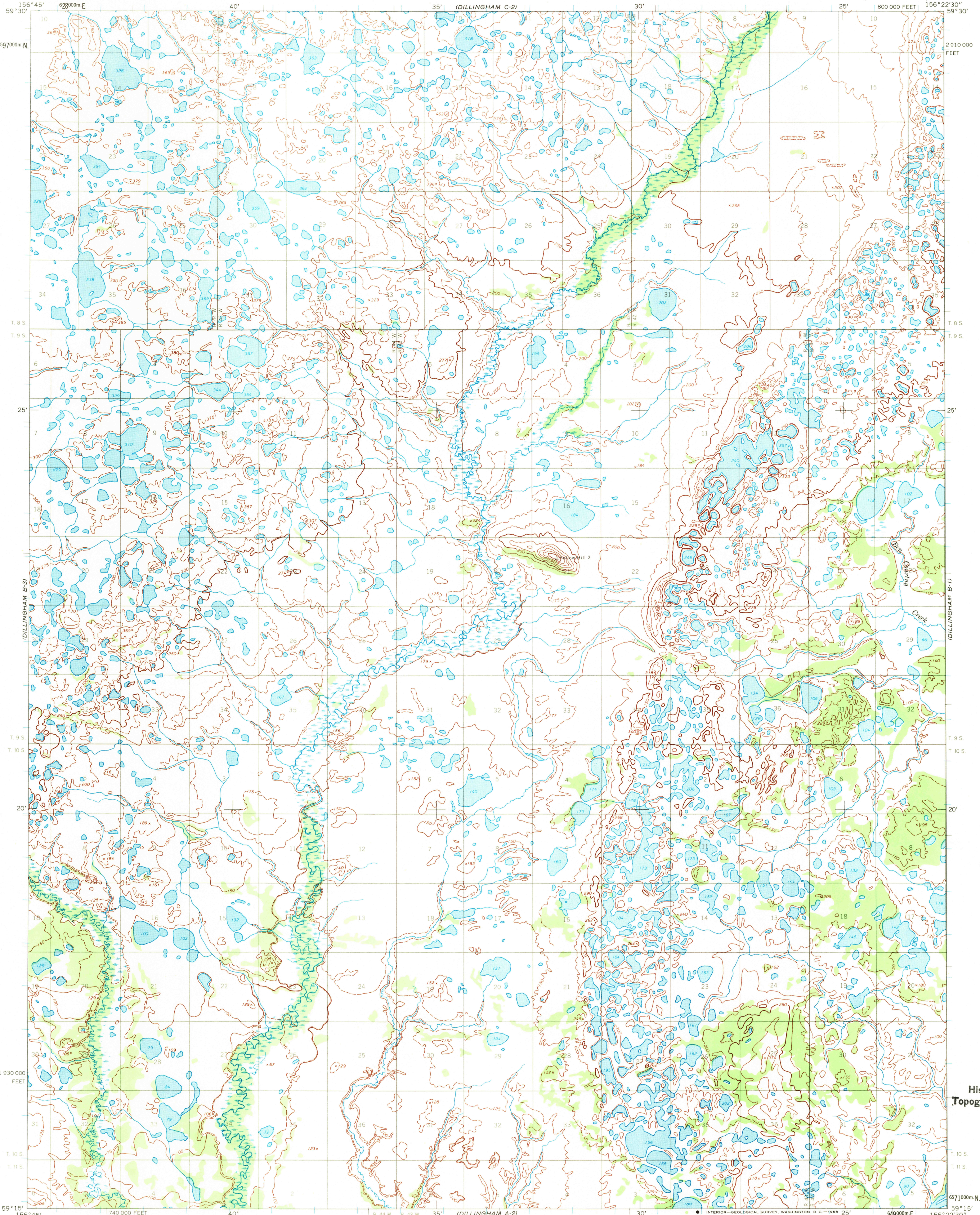


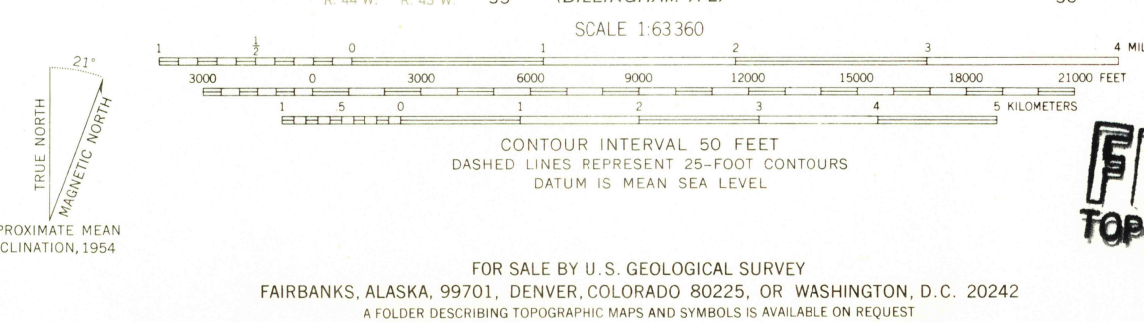
UNITED STATES  
DEPARTMENT OF THE INTERIOR  
GEOLOGICAL SURVEY

DILLINGHAM (B-2) QUADRANGLE  
ALASKA  
1:63 360 SERIES (TOPOGRAPHIC)



6597000m N  
156°45' 628000m E  
40' 35' (DILLINGHAM C-2) 30' 25' 800 000 FEET 156°22'30" 59°30'  
2010000 FEET  
T. 8 S.  
T. 9 S.  
25'  
7  
19  
T. 9 S.  
T. 10 S.  
20'  
1930000 FEET  
31  
T. 10 S.  
T. 11 S.  
59°15' 156°45'  
740 000 FEET  
40' 35' (DILLINGHAM A-2) 30' 25' 649000m E 156°22'30" 59°15'

Mapped by the Army Map Service  
Edited and published by the Geological Survey  
Control by USC&GS and USCE  
Topography by photogrammetric methods from aerial photographs taken 1953-1955, field annotated 1954. Map not field checked  
Universal Transverse Mercator projection. 1927 North American datum  
10,000-foot grid based on Alaska coordinate system, zone 6  
1000-meter Universal Transverse Mercator grid ticks, zone 4, shown in blue  
Land lines represent unsurveyed and unmarked locations predetermined by the Bureau of Land Management  
Folio S-18, Seward Meridian



U.S.G.S.  
FILE COPY  
TOPOGRAPHIC DIVISION

DILLINGHAM (B-2), ALASKA  
N5915-W15622.5/15x22.5

ROAD CLASSIFICATION  
No roads or trails in this area

FOR SALE BY U.S. GEOLOGICAL SURVEY  
FAIRBANKS, ALASKA, 99701, DENVER, COLORADO 80225, OR WASHINGTON, D.C. 20242  
A FOLDER DESCRIBING TOPOGRAPHIC MAPS AND SYMBOLS IS AVAILABLE ON REQUEST

1954

USGS  
Historical File  
Topographic Division

2385  
MAY 19 '69