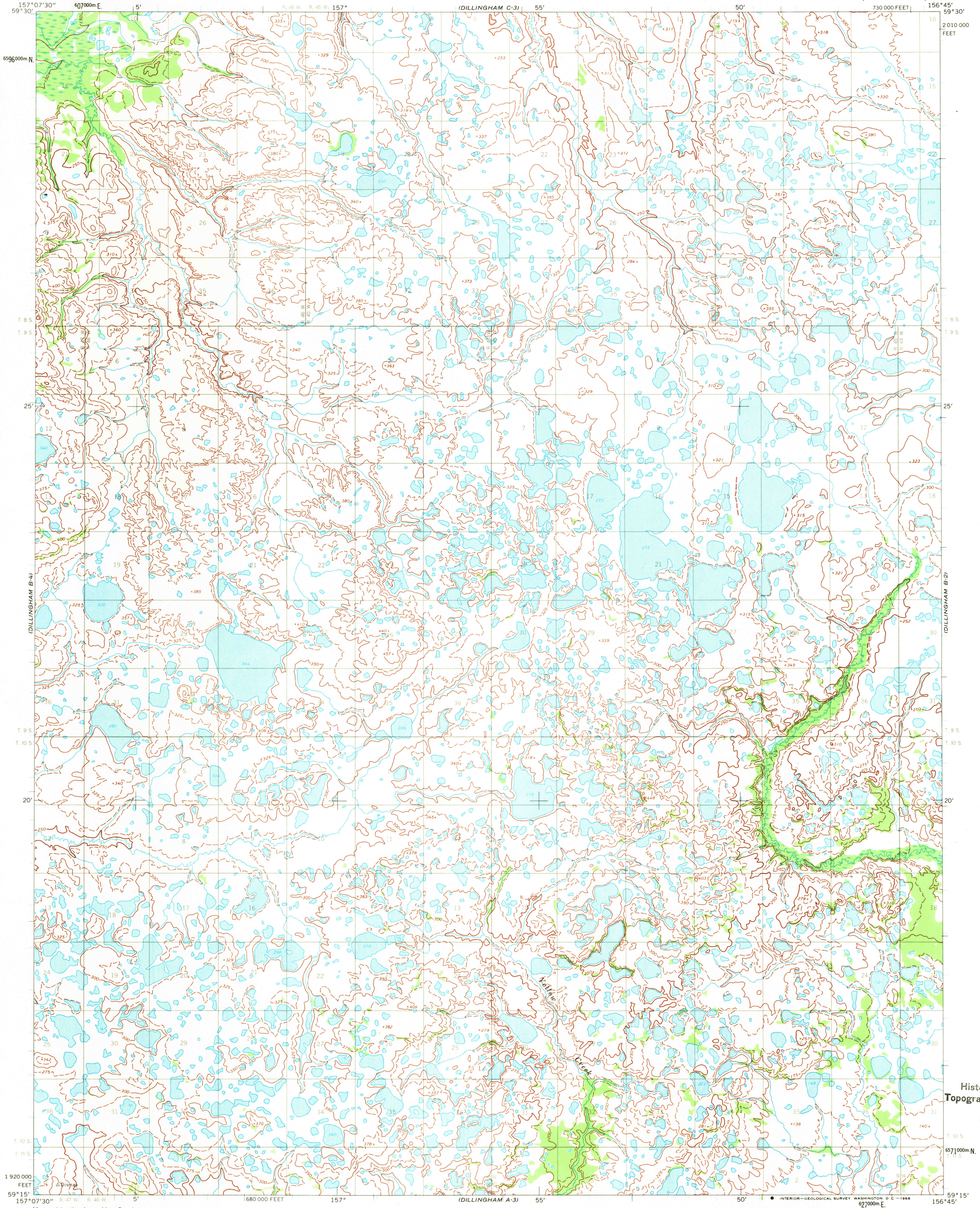


UNITED STATES
DEPARTMENT OF THE INTERIOR
GEOLOGICAL SURVEY

DILLINGHAM (B-3) QUADRANGLE
ALASKA
1:63 360 SERIES (TOPOGRAPHIC)



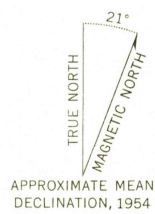
Mapped by the Army Map Service
Edited and published by the Geological Survey

Control by USC&GS and USCE

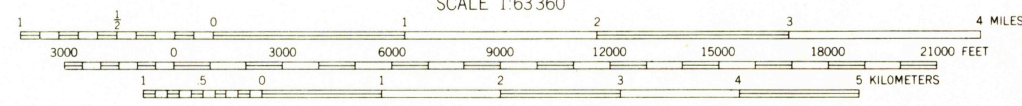
Topography by photogrammetric methods from aerial photographs
taken in 1953, field annotated 1954. Map not field checked

Universal Transverse Mercator projection. 1927 North American datum
10,000-foot grid based on Alaska coordinate system, zone 6
1000-meter Universal Transverse Mercator grid ticks,
zone 4, shown in blue

Land lines represent unsurveyed and unmarked locations
predetermined by the Bureau of Land Management
Folio S-18, Seward Meridian



APPROXIMATE MEAN
DECLINATION, 1954



CONTOUR INTERVAL 50 FEET
DASHED LINES REPRESENT 25-FOOT CONTOURS
DATUM IS MEAN SEA LEVEL

FOR SALE BY U.S. GEOLOGICAL SURVEY
FAIRBANKS, ALASKA, 99701, DENVER, COLORADO 80225, OR WASHINGTON, D. C. 20242
A FOLDER DESCRIBING TOPOGRAPHIC MAPS AND SYMBOLS IS AVAILABLE ON REQUEST

U.S.G.S.
FILE COPY
TOPOGRAPHIC DIVISION

ROAD CLASSIFICATION
No roads or trails in this area

DILLINGHAM (B-3), ALASKA
N5915-W15645/15X22.5

1954

2295
MAY 10 '69