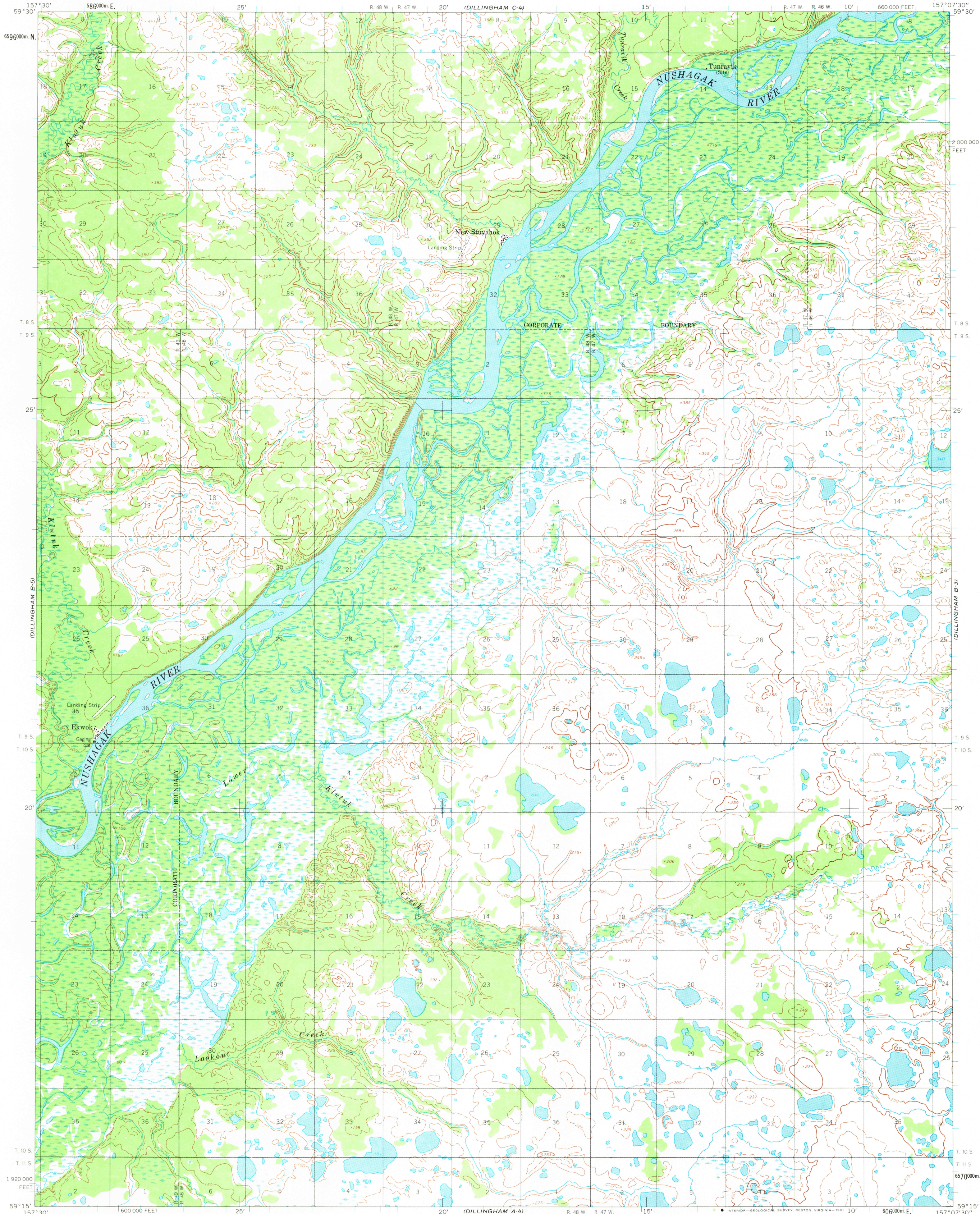


UNITED STATES  
DEPARTMENT OF THE INTERIOR  
GEOLOGICAL SURVEY

DILLINGHAM (B-4) QUADRANGLE  
ALASKA  
1:63 360 SERIES (TOPOGRAPHIC)

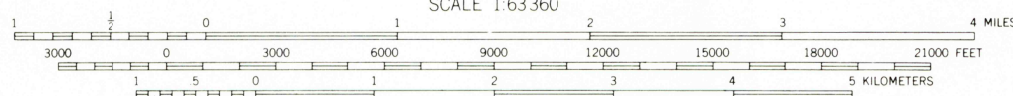
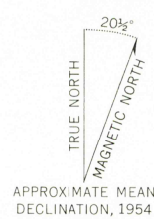


Mapped by the Army Map Service  
Edited and published by the Geological Survey  
Control by US&GS and USCE

Topography by photogrammetric methods from aerial photographs  
taken 1953 and 1955, field annotated 1954. Map not field checked  
Universal Transverse Mercator projection, 1927 North American datum  
10,000-foot grid based on Alaska coordinate system, zone 6  
1000-meter Universal Transverse Mercator grid ticks,  
zone 4, shown in blue

Land lines represent unsurveyed and unmarked locations  
predetermined by the Bureau of Land Management  
folios S-18 and S-19, Seward Meridian

Swamps, as portrayed, indicate only the wetter areas,  
usually of low relief, as interpreted from aerial photographs  
To place on the predicted North American Datum 1983 move  
the projection lines 79 meters north and 135 meters east



CONTOUR INTERVAL 50 FEET  
DASHED LINES REPRESENT 25-FOOT CONTOURS  
NATIONAL GEODETIC VERTICAL DATUM OF 1929

FOR SALE BY U.S. GEOLOGICAL SURVEY  
FAIRBANKS, ALASKA 99701, DENVER, COLORADO 80225, OR RESTON, VIRGINIA 22092  
A FOLDER DESCRIBING TOPOGRAPHIC MAPS AND SYMBOLS IS AVAILABLE ON REQUEST



ROAD CLASSIFICATION  
No roads or trails in this area

DILLINGHAM (B-4), ALASKA  
N5915—W15707.5/15X22.5

1954  
MINOR REVISIONS 1981

RETURN TO:  
NHD HISTORICAL MAP ARCHIVES  
USGS NATIONAL CENTER, MS-522  
RESTON, VA 22098

JAN 7 1982