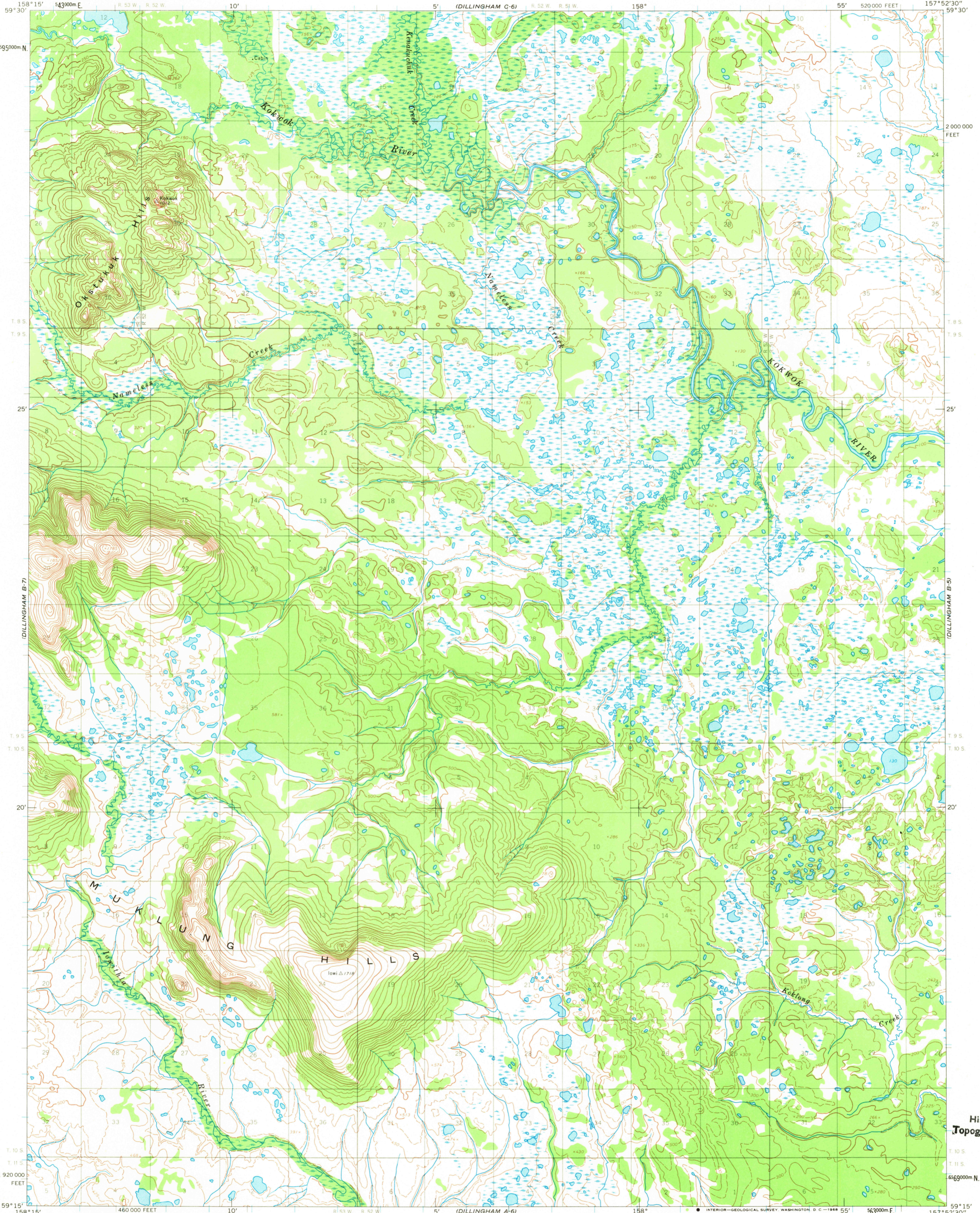
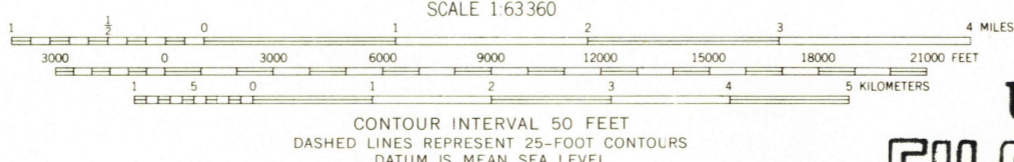
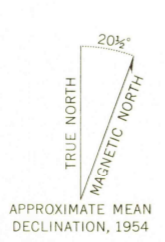


UNITED STATES  
DEPARTMENT OF THE INTERIOR  
GEOLOGICAL SURVEY

DILLINGHAM (B-6) QUADRANGLE  
ALASKA  
1:63 360 SERIES (TOPOGRAPHIC)



Mapped by the Army Map Service  
Published for civil use by the Geological Survey  
Control by USC&GS and USCE  
Topography by photogrammetric methods from aerial photographs  
taken 1953 and 1955, field annotated 1954. Map not field checked  
Universal Transverse Mercator projection. 1927 North American datum  
10,000-foot grid based on Alaska coordinate system, zone 6  
1000-meter Universal Transverse Mercator grid ticks,  
zone 4, shown in blue  
Land lines represent unsurveyed and unmarked locations  
determined by the Bureau of Land Management  
Folio S-19, Seward Meridian



CONTOUR INTERVAL 50 FEET  
DASHED LINES REPRESENT 25-FOOT CONTOURS  
DATUM IS MEAN SEA LEVEL

U.S.G.S.  
FILE COPY  
TOPOGRAPHIC DIVISION

ROAD CLASSIFICATION  
No roads or trails in this area

FOR SALE BY U.S. GEOLOGICAL SURVEY  
FAIRBANKS, ALASKA, 99701, DENVER, COLORADO 80225, OR WASHINGTON, D.C. 20242  
A FOLDER DESCRIBING TOPOGRAPHIC MAPS AND SYMBOLS IS AVAILABLE ON REQUEST

DILLINGHAM (B-6), ALASKA  
N5915—W15752.5/15x22.5

1954

USGS  
Historical File  
Topographic Division

2095  
MAY 13 '60