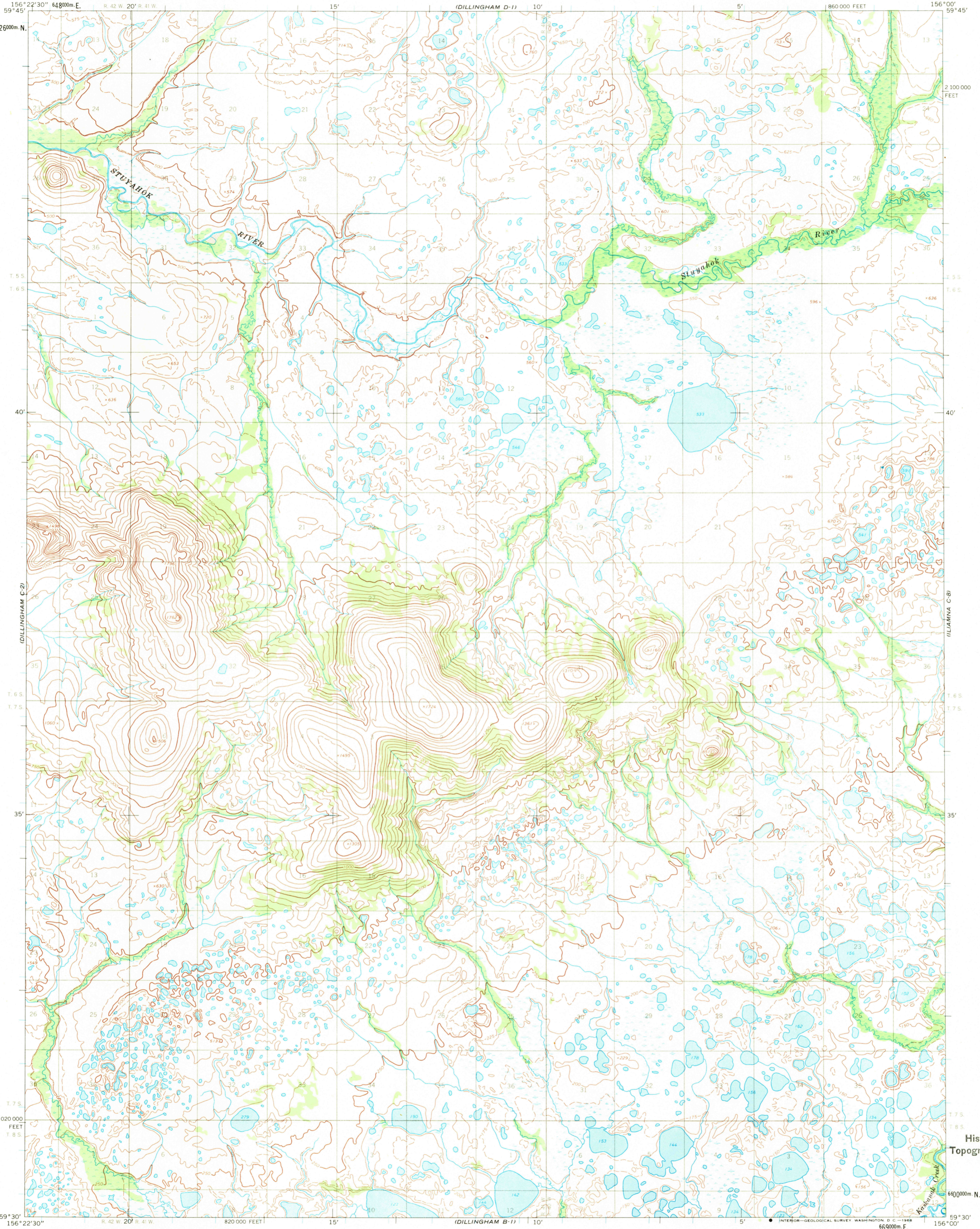


UNITED STATES  
DEPARTMENT OF THE INTERIOR  
GEOLOGICAL SURVEY

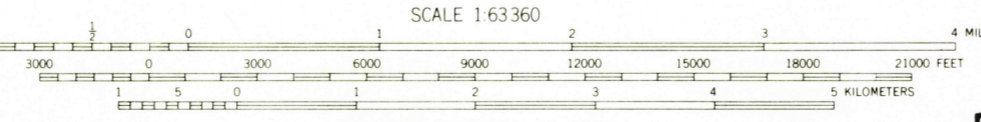
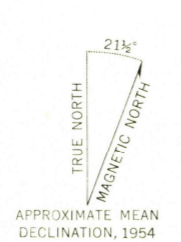
DILLINGHAM (C-1) QUADRANGLE  
ALASKA  
1:63 360 SERIES (TOPOGRAPHIC)



(DILLINGHAM D-1)  
156° 22' 30" W  
59° 45' N  
662600m. N.  
T. 5 S.  
T. 6 S.  
40'  
T. 6 S.  
T. 7 S.  
35'  
T. 7 S.  
202000 FEET  
T. 8 S.  
59° 30'  
156° 22' 30" W  
820 000 FEET  
15'

156° 00' W  
59° 45' N  
2 100 000 FEET  
T. 5 S.  
T. 6 S.  
40'  
T. 6 S.  
T. 7 S.  
35'  
T. 7 S.  
T. 8 S.  
660000m. N.  
59° 30'  
156° 00' W  
860 000 FEET  
15'

Mapped by the Army Map Service  
Edited and published by the Geological Survey  
Control by USC&GS and USCE  
Topography by photogrammetric methods from aerial photographs taken 1955, field annotated 1954. Map not field checked  
Universal Transverse Mercator projection. 1927 North American datum  
10,000-foot grid based on Alaska coordinate system, zone 6  
1000-meter Universal Transverse Mercator grid ticks, zone 4, shown in blue  
Land lines represent unsurveyed and unmarked locations predetermined by the Bureau of Land Management  
Folio S-18, Seward Meridian



CONTOUR INTERVAL 50 FEET  
DASHED LINES REPRESENT 25-FOOT CONTOURS  
DATUM IS MEAN SEA LEVEL

FOR SALE BY U.S. GEOLOGICAL SURVEY  
FAIRBANKS, ALASKA, 99701, DENVER, COLORADO 80225, OR WASHINGTON, D.C. 20242  
A FOLDER DESCRIBING TOPOGRAPHIC MAPS AND SYMBOLS IS AVAILABLE ON REQUEST

U.S.G.S.  
**FILE COPY**  
TOPOGRAPHIC DIVISION  
QUADRANGLE LOCATION

ROAD CLASSIFICATION  
No roads or trails in this area

DILLINGHAM (C-1), ALASKA  
N5930-W15600/15X22.5

1954

USGS  
Historical File  
Topographic Division

23 55  
JUN 10 1969