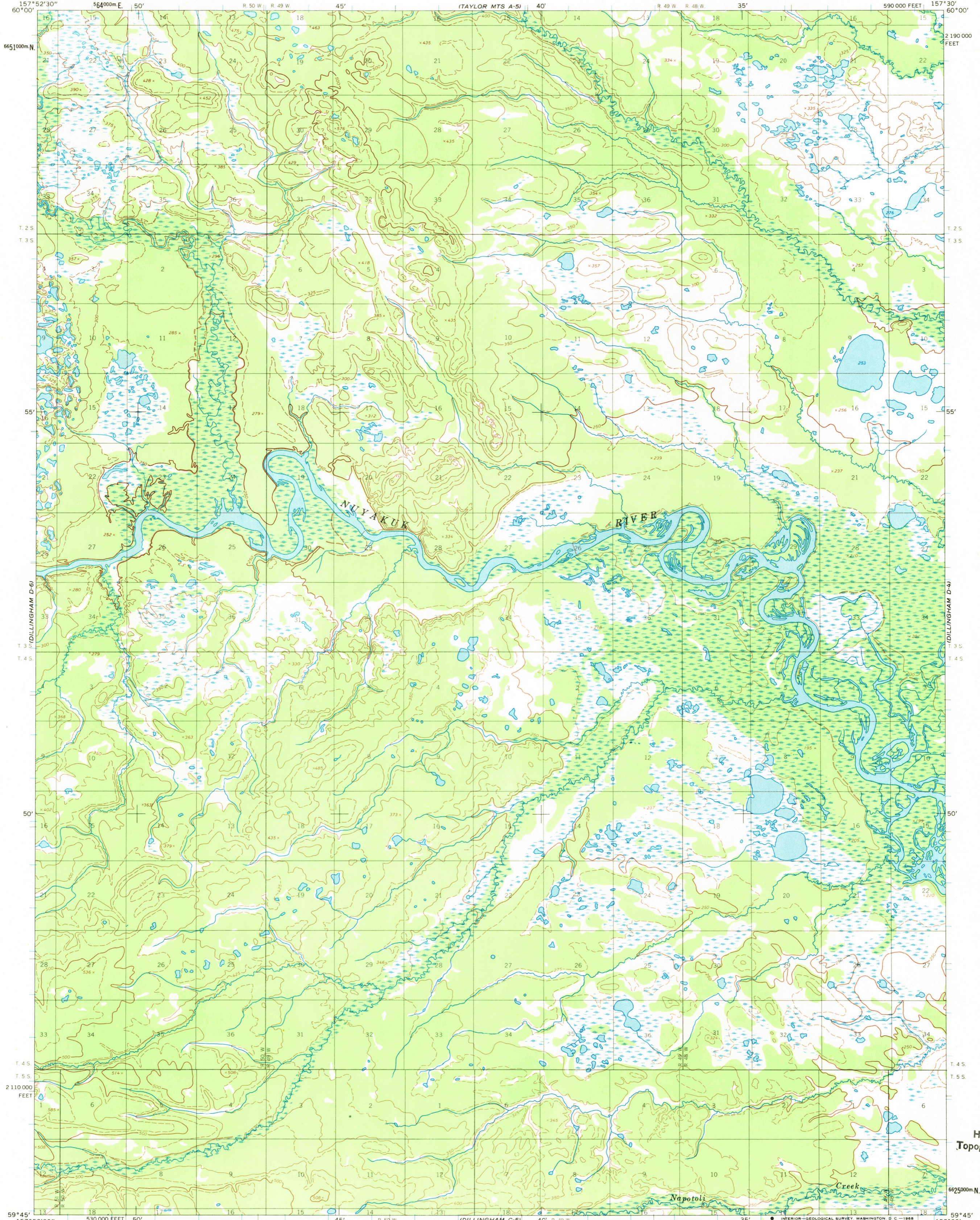
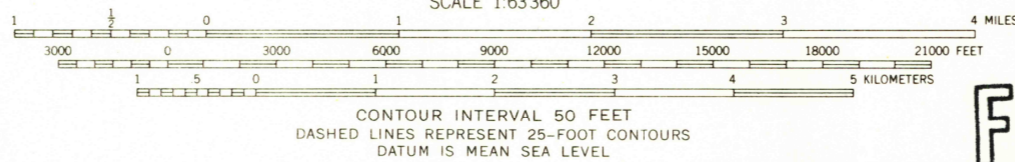
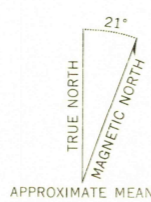


UNITED STATES  
DEPARTMENT OF THE INTERIOR  
GEOLOGICAL SURVEY

DILLINGHAM (D-5) QUADRANGLE  
ALASKA  
1:63 360 SERIES (TOPOGRAPHIC)



Mapped by the Army Map Service  
Edited and published by the Geological Survey  
Control by USC&GS and USCE  
Topography by photogrammetric methods from aerial photographs  
taken 1955, field annotated 1954. Map not field checked  
Universal Transverse Mercator projection. 1927 North American datum  
10,000-foot grid based on Alaska coordinate system, zone 6  
1000-meter Universal Transverse Mercator grid ticks, zone 4,  
shown in blue  
Land lines represent unsurveyed and unmarked locations  
predetermined by the Bureau of Land Management  
Folios S-18 and S-19, Seward Meridian



U.S.G.S.  
**FILE COPY**  
TOPOGRAPHIC DIVISION

ROAD CLASSIFICATION  
No roads or trails in this area

FOR SALE BY U.S. GEOLOGICAL SURVEY  
FAIRBANKS, ALASKA 99701, DENVER, COLORADO 80225, OR WASHINGTON, D. C. 20242  
A FOLDER DESCRIBING TOPOGRAPHIC MAPS AND SYMBOLS IS AVAILABLE ON REQUEST

DILLINGHAM (D-5), ALASKA  
N5945-W15730/15X22.5

1954

JUN 9 1959