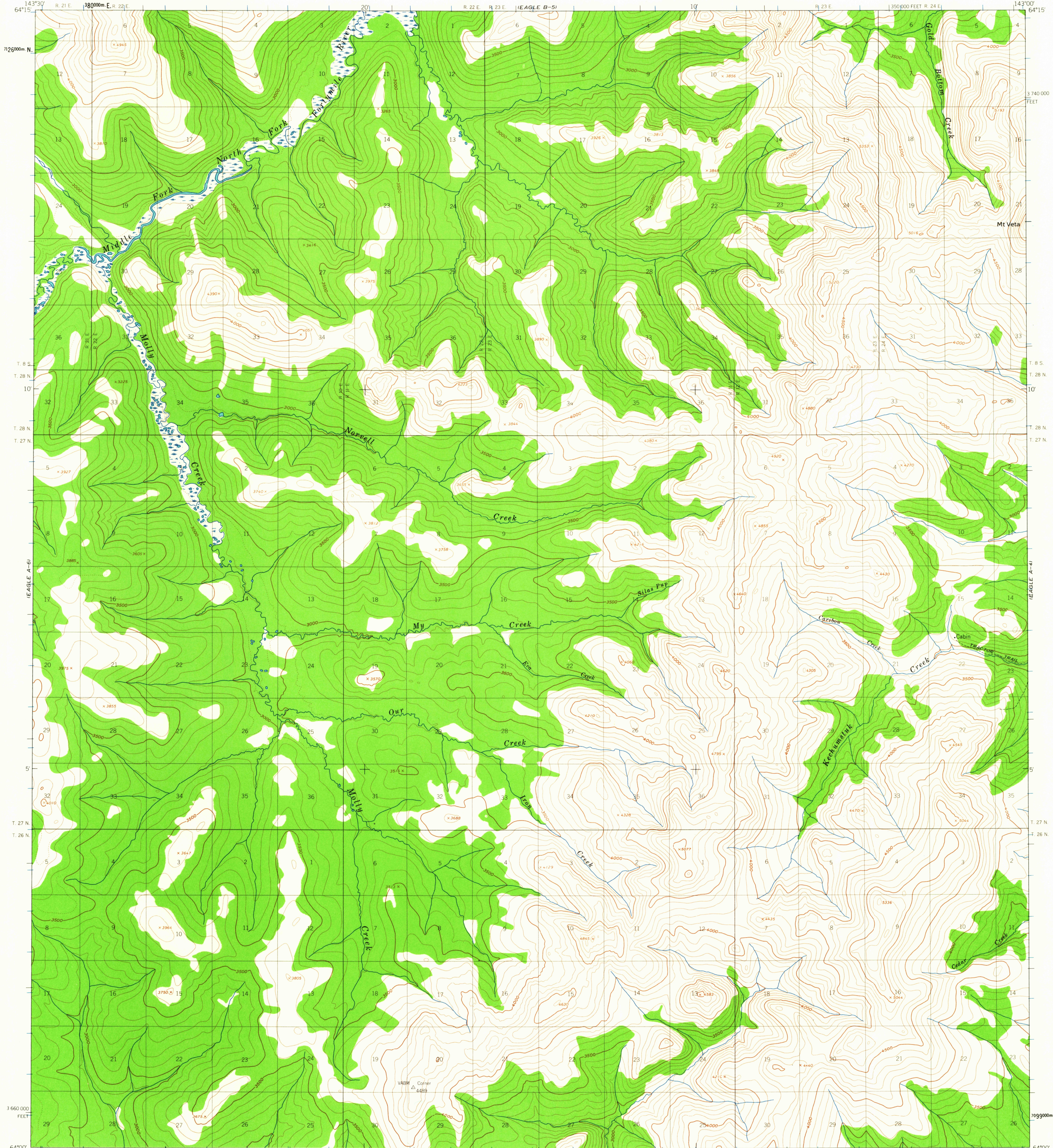
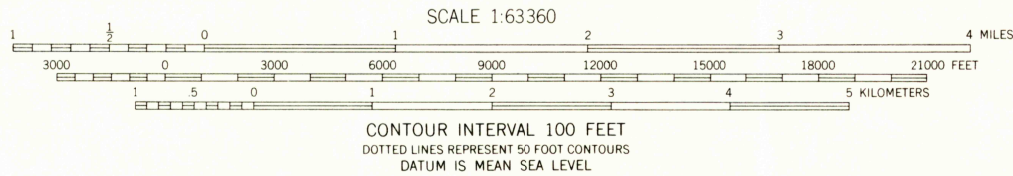
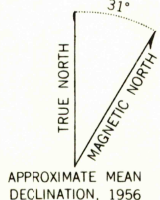


UNITED STATES  
DEPARTMENT OF THE INTERIOR  
GEOLOGICAL SURVEY

EAGLE (A-5) QUADRANGLE  
ALASKA  
1:63 360 SERIES (TOPOGRAPHIC)



Mapped, edited, and published by the Geological Survey  
Control by USGS and USC&GS  
Topography by photogrammetric methods from aerial photographs  
taken 1954, field annotated 1956. Map not field checked  
Universal Transverse Mercator projection, 1927 North American Datum  
10,000-foot grid based on Alaska coordinate system, zone 2  
1000-meter Universal Transverse Mercator grid ticks,  
zone 7, shown in blue  
Land lines represent unsurveyed and unmarked locations  
predetermined by the Bureau of Land Management  
Folio CR-1, Copper River Meridian and Folio F-8, Fairbanks Meridian  
Swamps, as portrayed indicate only the wetter areas,  
usually of low relief, as interpreted from aerial photographs



USGS  
Historical File  
Topographic Division

ROAD CLASSIFICATION  
Trails



FOR SALE BY U. S. GEOLOGICAL SURVEY  
FAIRBANKS, ALASKA DENVER 25, COLORADO WASHINGTON 25, D. C.  
A FOLDER DESCRIBING TOPOGRAPHIC MAPS AND SYMBOLS IS AVAILABLE ON REQUEST

EAGLE (A-5), ALASKA  
N6400-W14300/15X30  
1956

FEB 26 1964  
2590