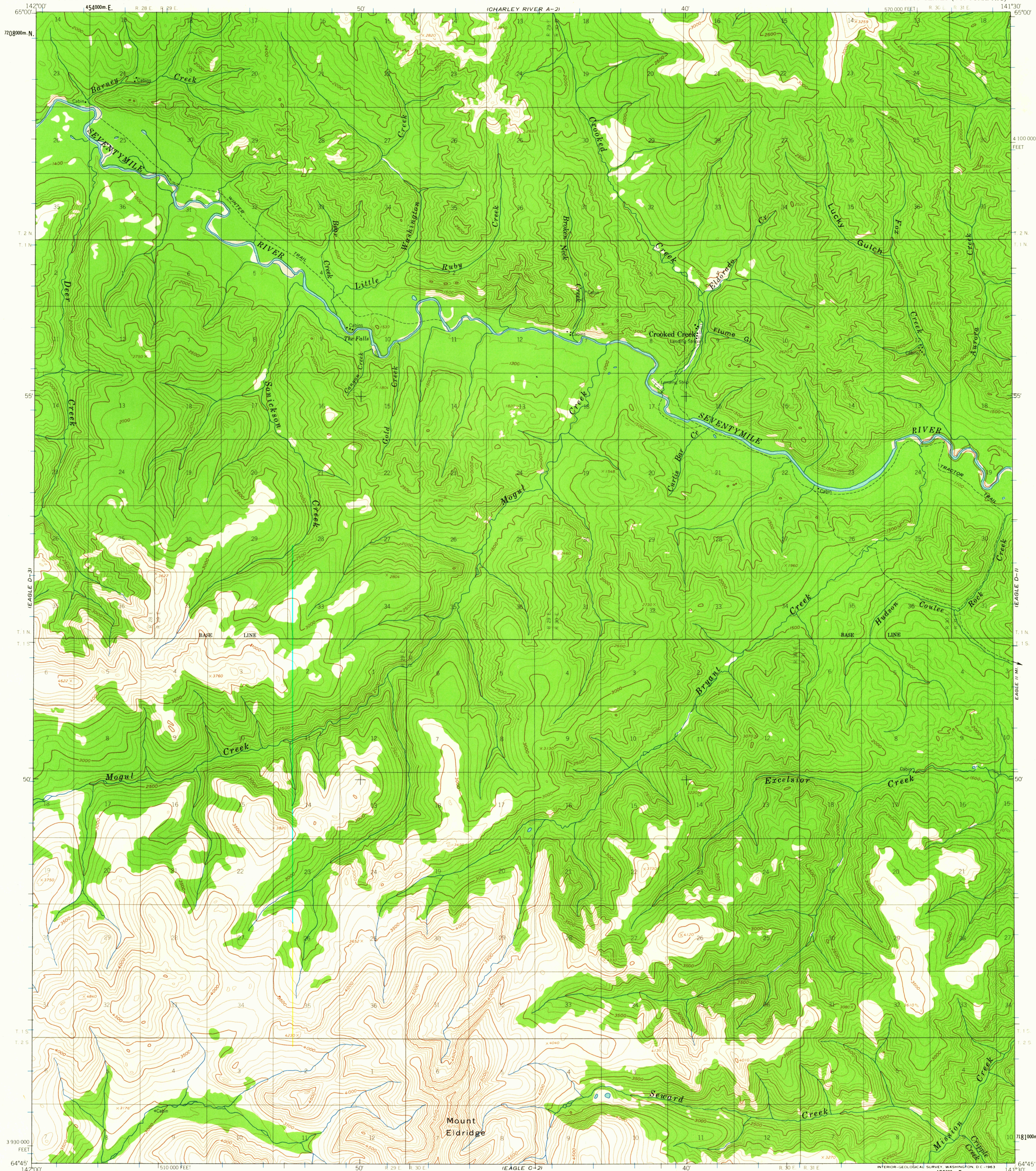


CHARLEY RIVER A-3

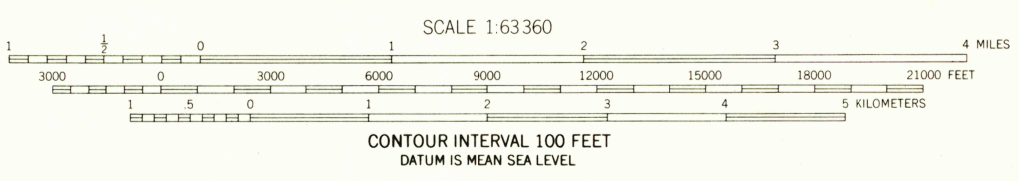
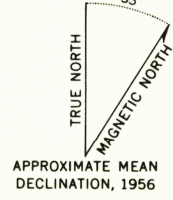
CHARLEY RIVER A-1

UNITED STATES  
DEPARTMENT OF THE INTERIOR  
GEOLOGICAL SURVEY

EAGLE (D-2) QUADRANGLE  
ALASKA  
1:63 360 SERIES (TOPOGRAPHIC)



Mapped, edited, and published by the Geological Survey  
Control by USGS, USC&GS, and International Boundary Commission  
Topography by photogrammetric methods from aerial photographs  
taken 1954 - 1955, field annotated 1956. Map not field checked  
Universal Transverse Mercator projection, 1927 North American datum  
10,000-foot grid based on Alaska coordinate system, zone 2  
1000 meter Universal Transverse Mercator grid ticks,  
zone 7, shown in blue  
Land lines represent unsurveyed and unmarked locations  
predetermined by the Bureau of Land Management  
Folio F-8, Fairbanks Meridian



FOR SALE BY U. S. GEOLOGICAL SURVEY  
FAIRBANKS, ALASKA DENVER 25, COLORADO WASHINGTON 25, D. C.  
A FOLDER DESCRIBING TOPOGRAPHIC MAPS AND SYMBOLS IS AVAILABLE ON REQUEST



ROAD CLASSIFICATION  
Trails  
USGS  
Historical File  
Topography

EAGLE (D-2), ALASKA  
N6445-W14130/15X30  
1956

OCT 24 1963

3555