

(FAIRBANKS B-3)

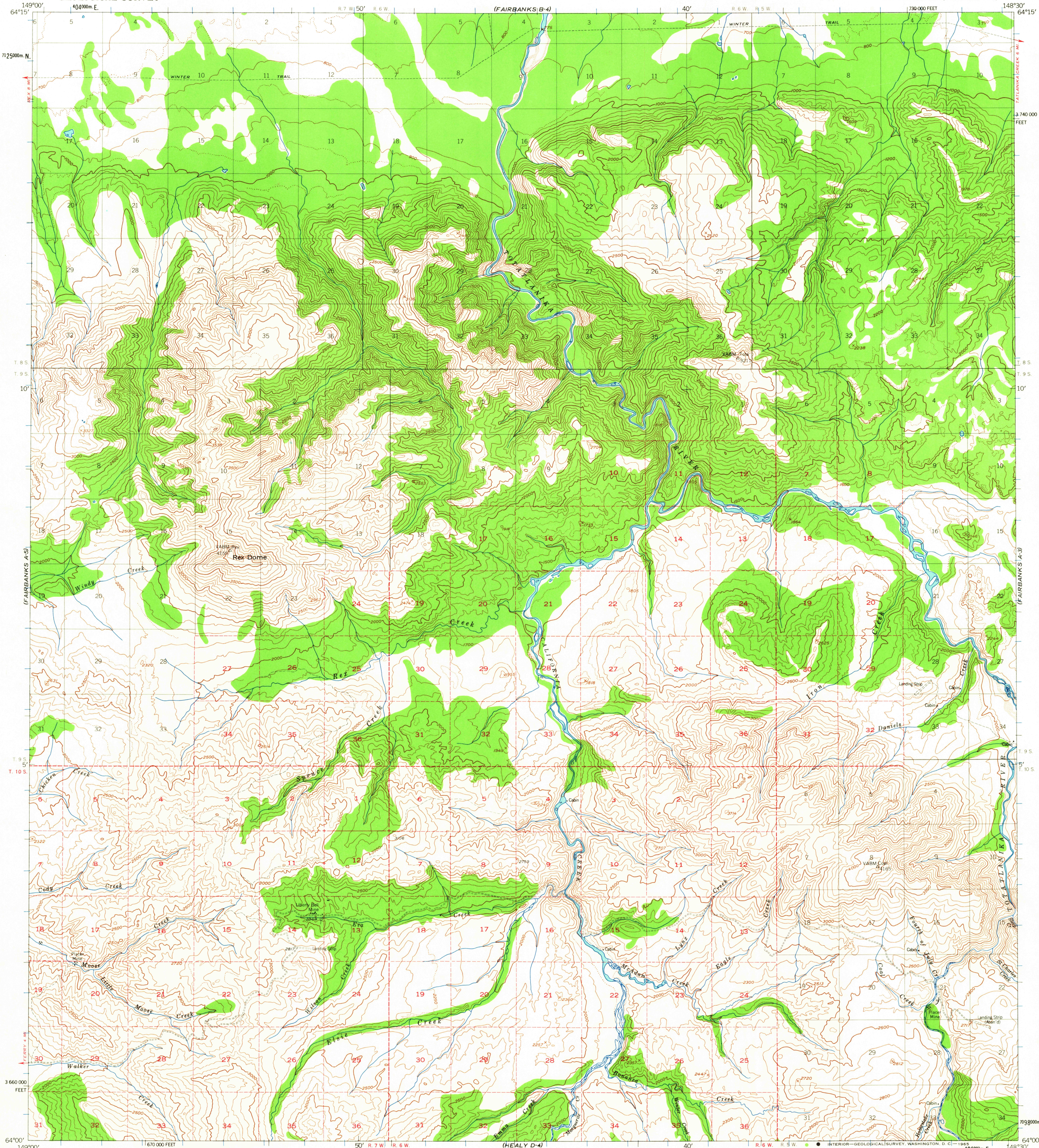
(HEALY D-3)

(FAIRBANKS B-3)

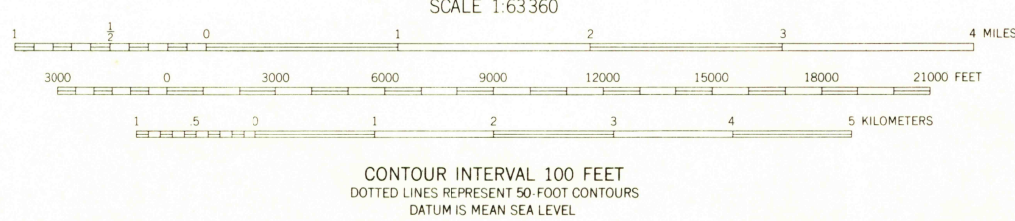
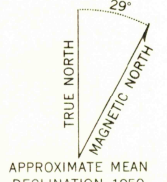
(HEALY D-3)

UNITED STATES
DEPARTMENT OF THE INTERIOR
GEOLOGICAL SURVEY

FAIRBANKS (A-4) QUADRANGLE
ALASKA
1:63 360 SERIES (TOPOGRAPHIC)

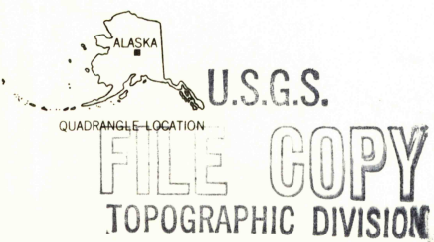


Maped, edited, and published by the Geological Survey
Control by USGS and USC&GS
Topography by photogrammetric methods from aerial photographs
taken 1949, field annotated 1950. Map not field checked
Universal Transverse Mercator projection, 1927 North American datum
10,000-foot grid based on Alaska coordinate system, zone 4
1000-meter Universal Transverse Mercator grid ticks,
zone 6, shown in blue
Land lines printed in gray represent unsurveyed and
unmarked locations predetermined by the Bureau of
Land Management. Folio F-10, Fairbanks Meridian



USGS
Historical File
Topographic Division

ROAD CLASSIFICATION
Unimproved dirt



FAIRBANKS (A-4), ALASKA
N6400-W14830/15X30
1950
MINOR REVISIONS 1963
JUN 28 1965
3245

FOR SALE BY U. S. GEOLOGICAL SURVEY
FAIRBANKS, ALASKA 99701, DENVER, COLORADO 80225 OR WASHINGTON, D. C. 20242
A FOLDER DESCRIBING TOPOGRAPHIC MAPS AND SYMBOLS IS AVAILABLE ON REQUEST