

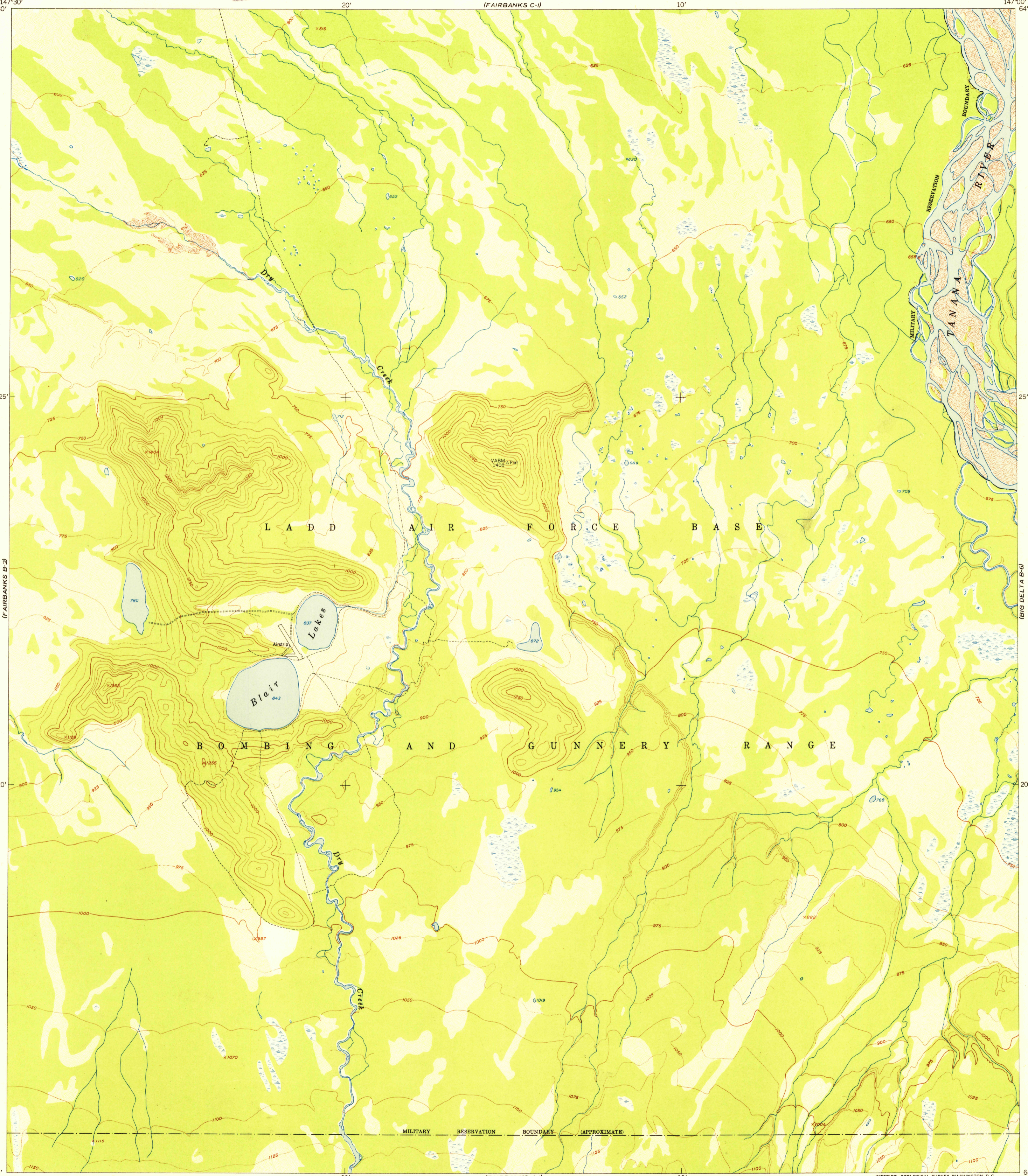
(FAIRBANKS C-2)
147°30'
64°30'

UNITED STATES
DEPARTMENT OF THE INTERIOR
GEOLOGICAL SURVEY

U.S.G.S.
FILE COPY
Inspection and Editing.

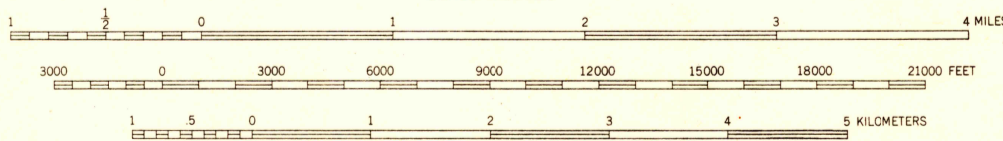
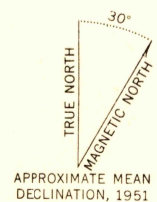
FAIRBANKS (B-1) QUADRANGLE
ALASKA-FOURTH JUDICIAL DIVISION
1:63 360 SERIES (TOPOGRAPHIC)

(BIG DELTA C-6)
147°00'
64°30'



(FAIRBANKS A-2)
64°15'
147°30'

Mapped, edited, and published by the Geological Survey
Control by USGS and USC&GS
Topography from aerial photographs by multiplex methods
Aerial photographs taken August 1949
Universal Transverse Mercator projection, zone 6
1927 North American datum
Unchecked elevations shown in brown and blue



CONTOUR INTERVAL 50 FEET
DOTTED LINES REPRESENT HALF-INTERVAL CONTOURS
DATUM IS MEAN SEA LEVEL

ROAD CLASSIFICATION

ALL WEATHER ROADS	DRY WEATHER ROADS
Hard-surface _____ None	Improved dirt _____ None
Other _____ None	Unimproved dirt _____
	Trails _____

FOR SALE BY U. S. GEOLOGICAL SURVEY, FEDERAL CENTER, DENVER, COLORADO OR WASHINGTON 25, D. C.
A FOLDER DESCRIBING TOPOGRAPHIC MAPS AND SYMBOLS IS AVAILABLE ON REQUEST

U.S.G.S.
FILE COPY
Inspection and Editing.

FAIRBANKS (B-1), ALASKA
N6415-W14700/15X30
Historical File
Topographic Division
EDITION OF 1951

(BIG DELTA A-6)
64°15'
147°00'