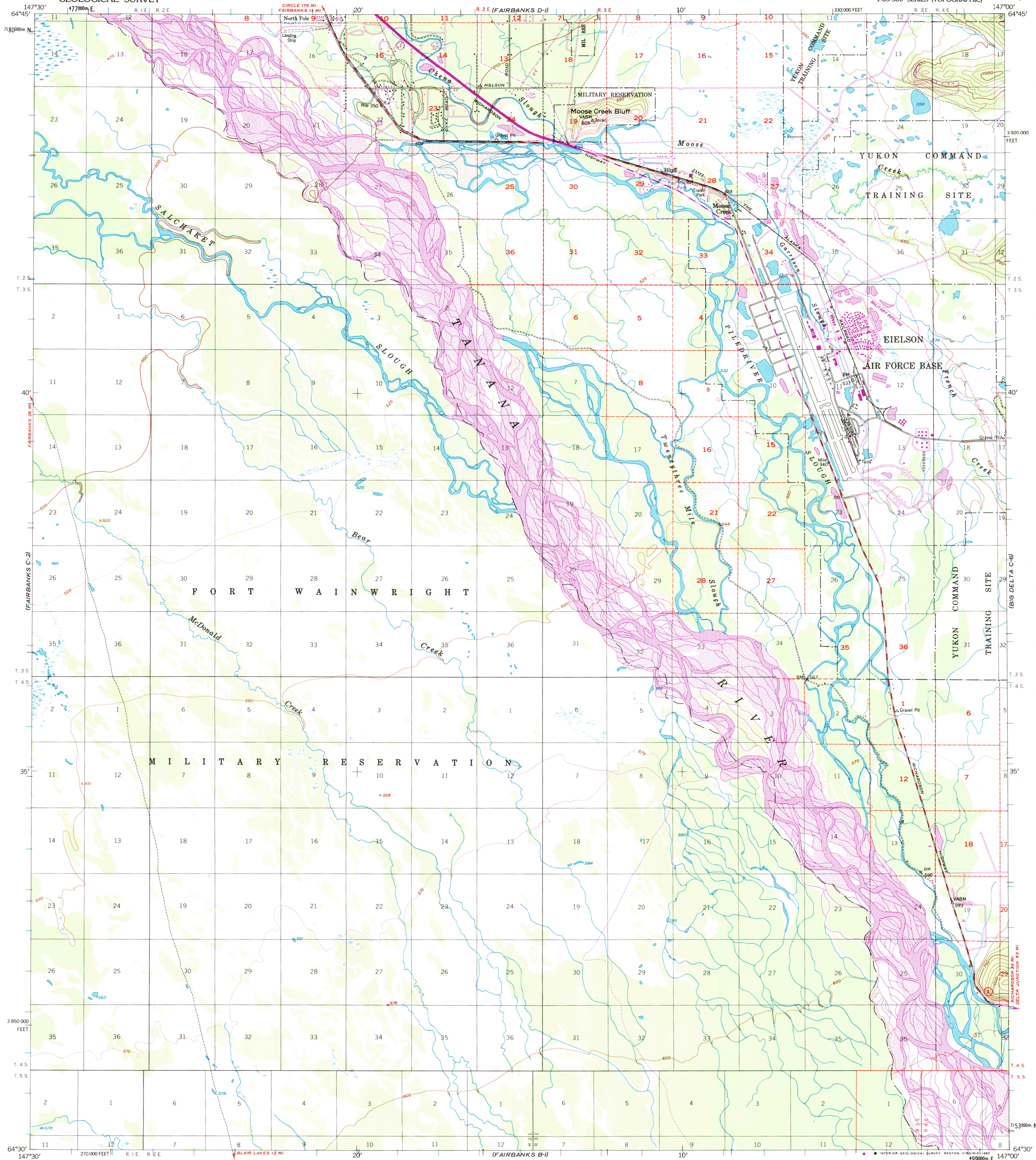
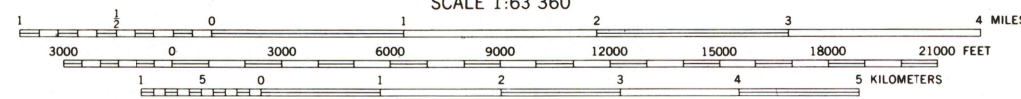
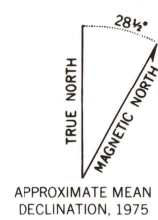


UNITED STATES
DEPARTMENT OF THE INTERIOR
GEOLOGICAL SURVEY

FAIRBANKS (C-1) QUADRANGLE
ALASKA-FAIRBANKS NORTH STAR BOROUGH
1:63 360 SERIES (TOPOGRAPHIC)



Mapped, edited, and published by the Geological Survey
Control by USGS and NOS/NOAA
Topography by photogrammetric methods from aerial photographs
taken 1943, field annotated 1950. Map not field checked
Projection and 10,000-foot grid ticks: Alaska
coordinate system, zone 3 (transverse Mercator)
1000-meter Universal Transverse Mercator grid ticks, zone 6,
shown in blue. 1927 North American Datum
The difference between 1927 North American Datum and North
American Datum of 1983 (NAD 83) for 7.5 minute intersections
is given in USGS Bulletin 1875
Gray land lines represent unsurveyed and unmarked locations
predetermined by the Bureau of Land Management
Folio F-9, Fairbanks Meridian
Swamps, as portrayed, indicate only wetter areas,
usually of low relief, as interpreted from aerial photographs
Revision shown in purple compiled from aerial photographs
taken 1972 and 1975. This information not field checked



CONTOUR INTERVAL 50 FEET
DOTTED LINES REPRESENT 25-FOOT CONTOURS
NATIONAL GEODETIC VERTICAL DATUM OF 1929

FOR SALE BY U. S. GEOLOGICAL SURVEY
FAIRBANKS, ALASKA 99701, DENVER, COLORADO 80225, OR RESTON, VIRGINIA 22092
A FOLDER DESCRIBING TOPOGRAPHIC MAPS AND SYMBOLS IS AVAILABLE ON REQUEST



ROAD CLASSIFICATION
Medium-duty ——— Light-duty ———
Unimproved dirt ———
State Route ———

FAIRBANKS (C-1), ALASKA
64147-E1-TF-063

1950
PHOTOREVISED 1972 AND 1975

RETURN TO:
NMD HISTORICAL MAP ARCHIVES
USGS NATIONAL CENTER, MS-522
RESTON, VA 22092

JUNE 10, 1992