

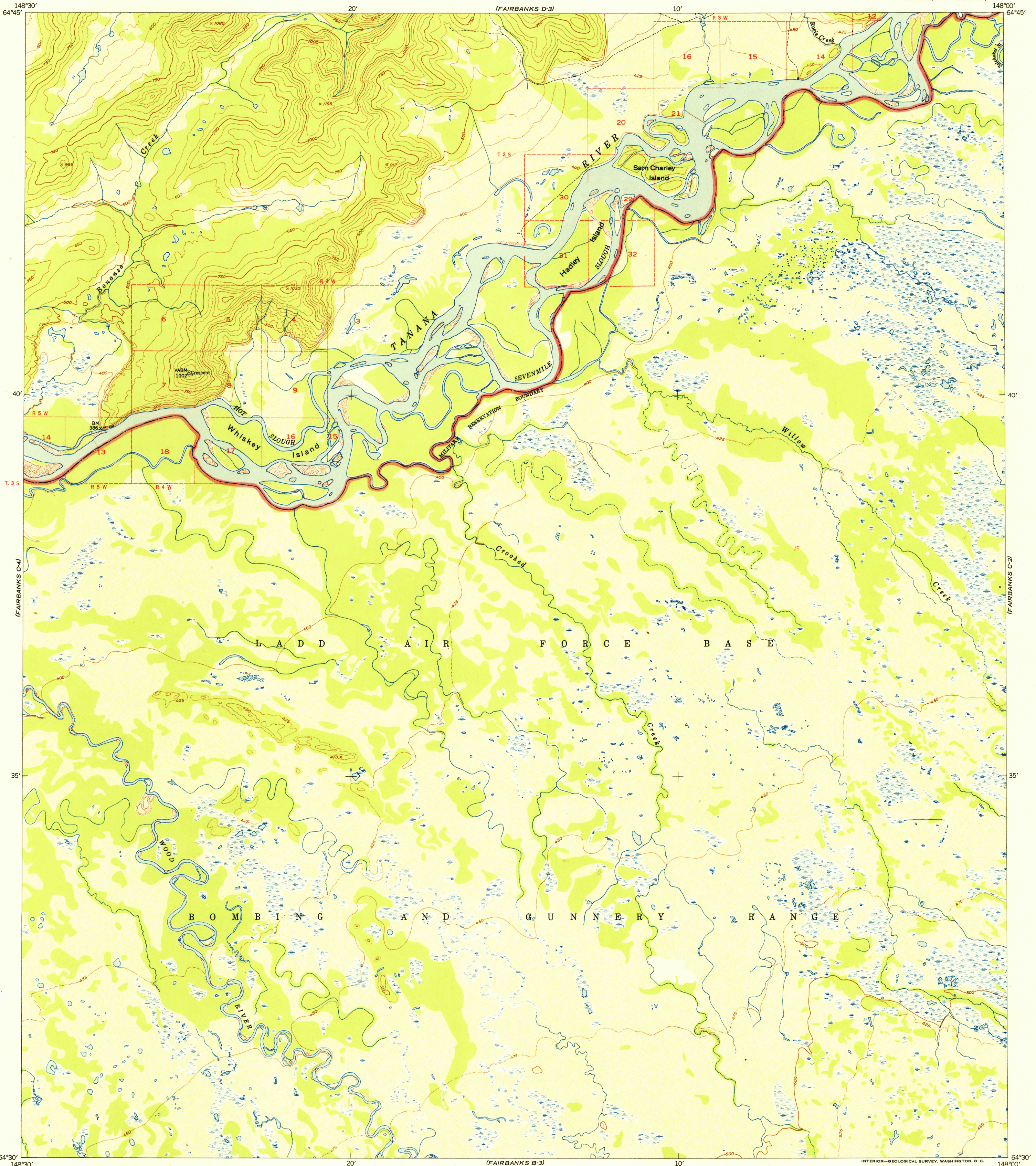
(FAIRBANKS D-4)

UNITED STATES  
DEPARTMENT OF THE INTERIOR  
GEOLOGICAL SURVEY

U.S.G.S.  
FILE COPY  
Inspection and Editing.

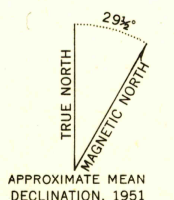
FAIRBANKS (C-3) QUADRANGLE  
ALASKA-FOURTH JUDICIAL DIVISION  
1:63 360 SERIES (TOPOGRAPHIC)

(FAIRBANKS D-2)

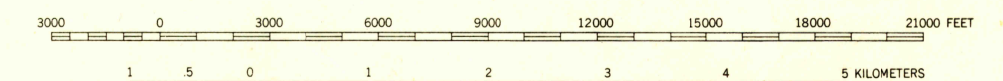


(FAIRBANKS B-4)

Mapped, edited, and published by the Geological Survey  
Control by USGS and USC&GS  
Topography from aerial photographs by multiplex methods  
Aerial photographs taken August 1949  
Universal Transverse Mercator projection, zone 6  
1927 North American datum  
Dashed land lines indicate approximate location  
Unchecked elevations shown in brown



(FAIRBANKS B-3)  
SCALE 1:63 360



CONTOUR INTERVAL 50 FEET  
DOTTED LINES REPRESENT HALF-INTERVAL CONTOURS  
AREAS NOT SURVEYED IN DETAIL INDICATED BY BROKEN LINES  
DATUM IS MEAN SEA LEVEL

USGS  
Historical File  
Topographic Division

ROAD CLASSIFICATION	
ALL WEATHER ROADS	DRY WEATHER ROADS
Hard-surface.....None	Improved dirt.....None
Other.....None	Unimproved dirt.....None
Trails.....	

U.S.G.S.  
FILE COPY  
Inspection and Editing.

FAIRBANKS (C-3), ALASKA  
N6430-W14800/15X30  
EDITION OF 1952

FOR SALE BY U.S. GEOLOGICAL SURVEY, FEDERAL CENTER, DENVER, COLORADO OR WASHINGTON 25, D.C.  
A FOLDER DESCRIBING TOPOGRAPHIC MAPS AND SYMBOLS IS AVAILABLE ON REQUEST