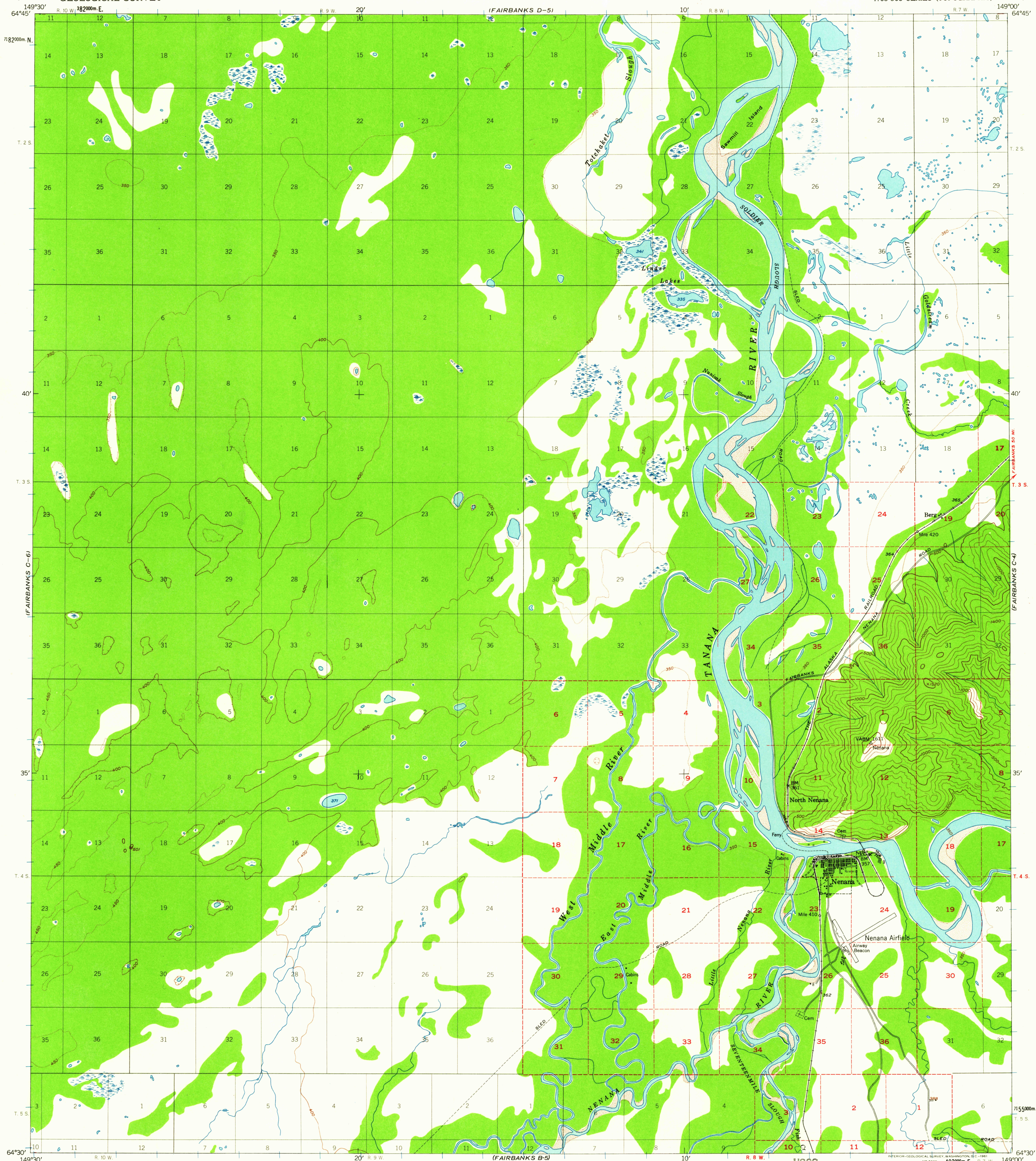
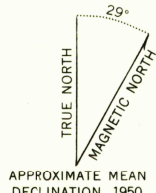


UNITED STATES
DEPARTMENT OF THE INTERIOR
GEOLOGICAL SURVEY

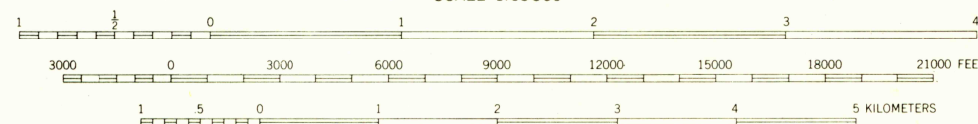
FAIRBANKS (C-5) QUADRANGLE
ALASKA
1:63 360 SERIES (TOPOGRAPHIC)



Mapped, edited, and published by the Geological Survey
Control by USGS and USC&GS
Topography from aerial photographs by photogrammetric methods
1951. Aerial photographs taken 1949, field annotated 1950.
Map not field checked
Universal Transverse Mercator projection, 1927 North American datum
1000-meter Universal Transverse Mercator grid ticks, zone 6,
shown in blue
Land lines printed in gray represent unsurveyed and unmarked
locations predetermined by the Bureau of Land Management.
Folio F-10, Fairbanks Meridian
Dashed land lines indicate approximate locations
Swamps, as portrayed, indicate only the wetter areas, usually of
low relief, as interpreted from aerial photographs



APPROXIMATE MEAN
DECLINATION, 1950



CONTOUR INTERVAL 100 FEET
DOTTED LINES REPRESENT 50-FOOT CONTOURS
DATUM IS MEAN SEA LEVEL

FOR SALE BY U.S. GEOLOGICAL SURVEY
FAIRBANKS, ALASKA DENVER 25, COLORADO WASHINGTON 25, D.C.
A FOLDER DESCRIBING TOPOGRAPHIC MAPS AND SYMBOLS IS AVAILABLE ON REQUEST

USGS
Historical File
Topographic Division



ROAD CLASSIFICATION
Light-duty ————— Unimproved dirt - - - - -

USGS
FILE COPY
TOPOGRAPHIC DIVISION

FAIRBANKS (C-5), ALASKA
N6430-W14900/15X30
1950
MINOR REVISIONS 1960

MAY - 4 1961
2020