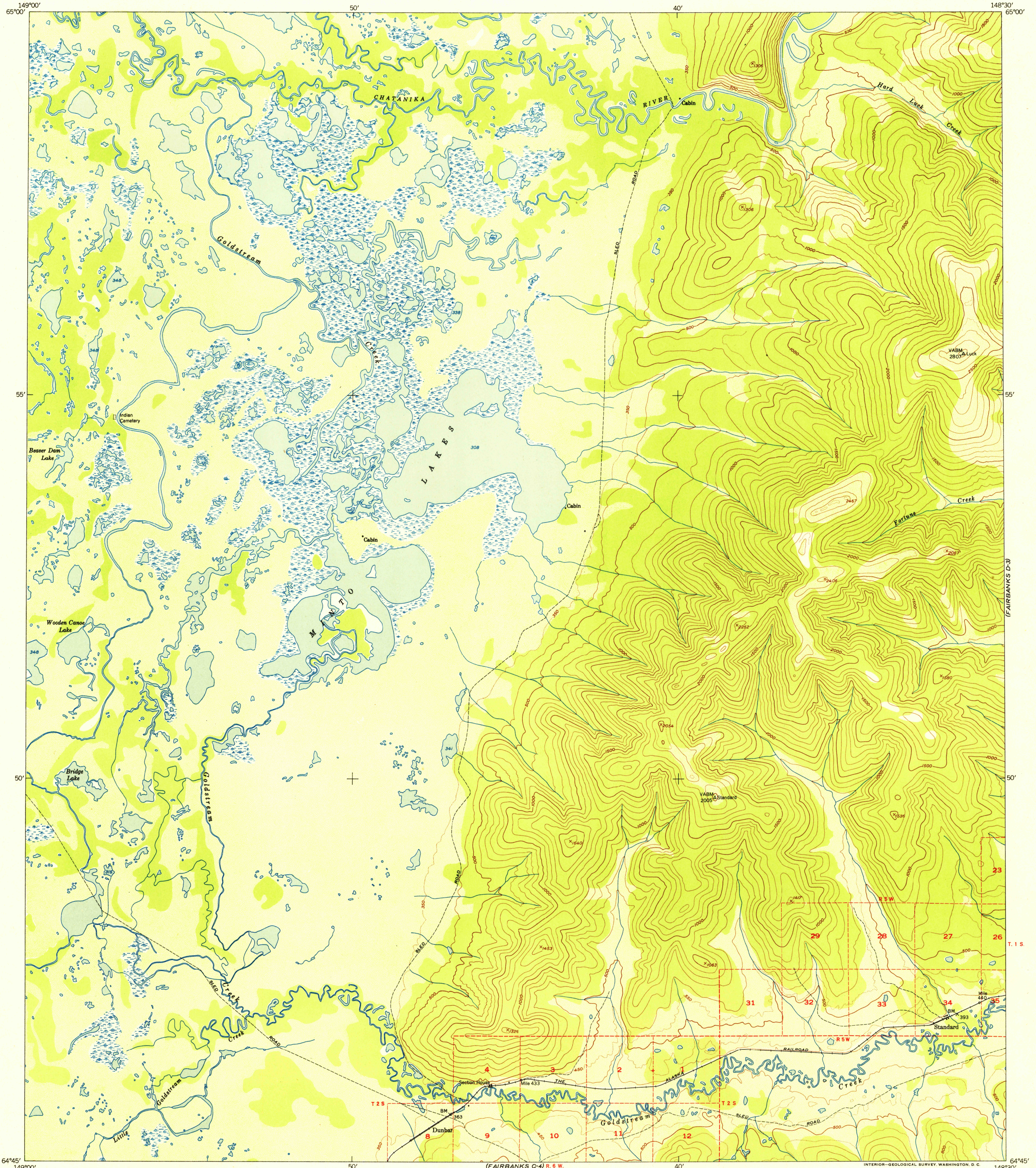
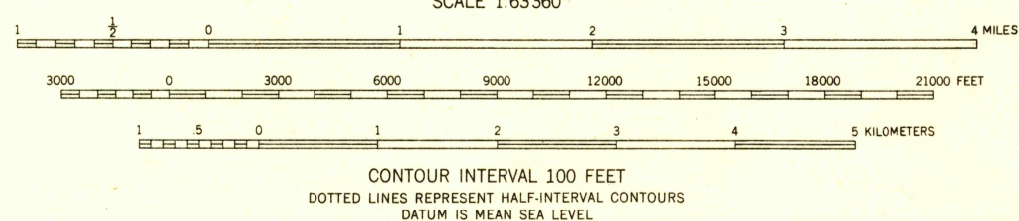
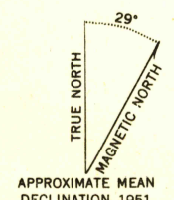


U.S.G.S.  
**FILE COPY**  
Inspection and Editing.



Mapped, edited, and published by the Geological Survey  
Control by USGS and USC&GS  
Topography from aerial photographs by multiplex methods  
Aerial photographs taken August 1949  
Universal Transverse Mercator projection, zone 6  
1927 North American datum  
Dashed land lines indicate approximate location  
Unchecked elevations shown in brown and blue



ROAD CLASSIFICATION

ALL WEATHER ROADS		DRY WEATHER ROADS	
Hard-surface	None	Improved-dirt	None
Other	None	Unimproved-dirt	None
		Trails	

U.S.G.S.  
**FILE COPY**  
Inspection and Editing.

FAIRBANKS (D-4), ALASKA  
N6445-W14830/15X30  
EDITION OF 1952

FOR SALE BY U.S. GEOLOGICAL SURVEY, FEDERAL CENTER, DENVER, COLORADO OR WASHINGTON 25, D. C.  
A FOLDER DESCRIBING TOPOGRAPHIC MAPS AND SYMBOLS IS AVAILABLE ON REQUEST

MAN 2 1952 2130