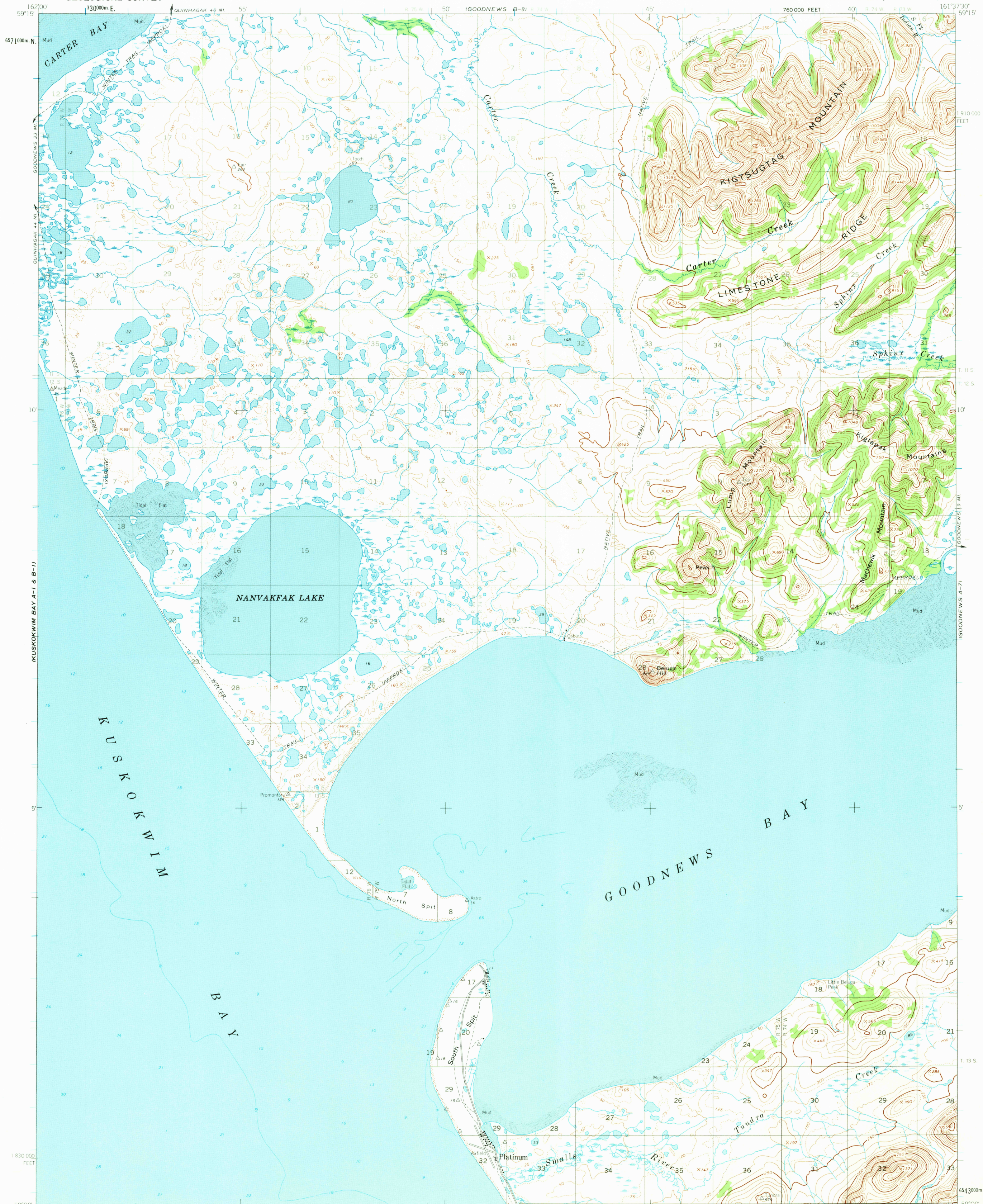
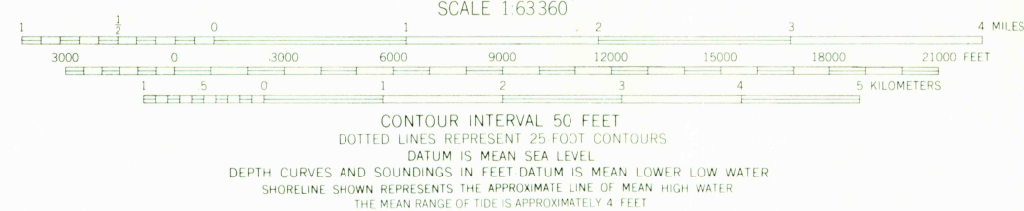


UNITED STATES  
DEPARTMENT OF THE INTERIOR  
GEOLOGICAL SURVEY

GOODNEWS (A-8) QUADRANGLE  
ALASKA  
1:63,360 SERIES (TOPOGRAPHIC)



Mapped by the Army Map Service  
Edited and published by the Geological Survey  
Control by USC&GS and USCE  
Topography by photogrammetric methods from aerial photographs  
taken 1952 and 1957, field annotated 1954. Map not field checked.  
Selected hydrographic data compiled from USC&GS Charts 9103 (19 6)  
This information is not intended for navigational purposes.  
Universal Transverse Mercator projection, 1927 North American datum  
10,000 foot grid based on Alaska coordinate system, zone 7  
1000 meter Universal Transverse Mercator grid ticks,  
zone 4, shown in blue  
Land lines represent unsurveyed and unmarked locations  
predetermined by the Bureau of Land Management  
Folio S 20, Seward Meridian



ROAD CLASSIFICATION  
Light-duty

FOR SALE BY U. S. GEOLOGICAL SURVEY  
FAIRBANKS, ALASKA 99701, DENVER, COLORADO 80225 OR WASHINGTON, D. C. 20242  
A FOLDER DESCRIBING TOPOGRAPHIC MAPS AND SYMBOLS IS AVAILABLE ON REQUEST

GOODNEWS (A-8), ALASKA  
N5900 - W16137 5/15X22 5

1954

USGS  
HISTORICAL FILE  
TOPOGRAPHIC DIVISION

2670

MAY 2 4 1973