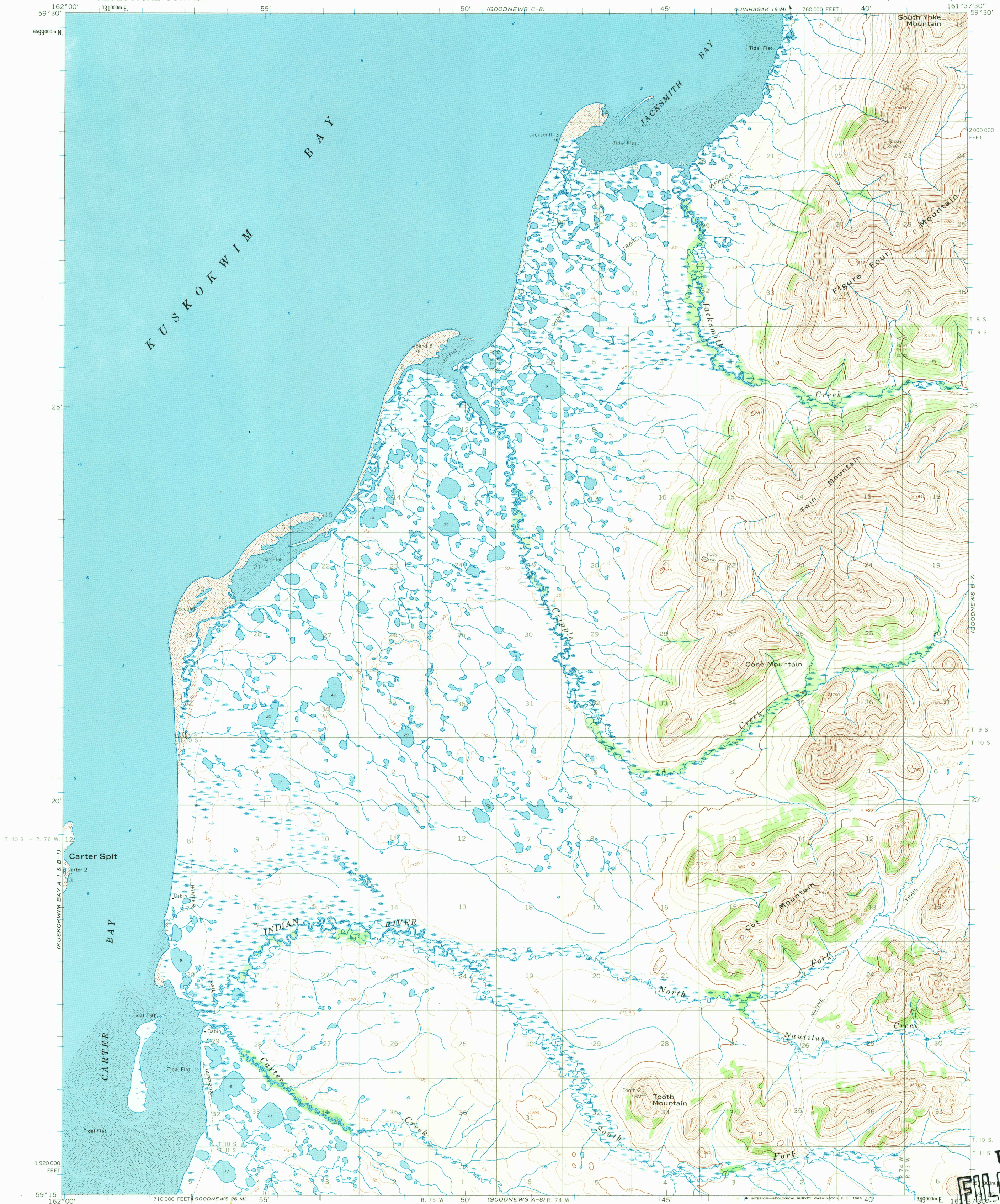


UNITED STATES  
DEPARTMENT OF THE INTERIOR  
GEOLOGICAL SURVEY

GOODNEWS (B-8) QUADRANGLE  
ALASKA  
1:63 360 SERIES (TOPOGRAPHIC)

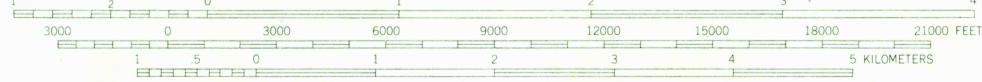


Mapped by the Army Map Service  
Edited and published by the Geological Survey  
Control by USC&GS and USCE

Topography by photogrammetric methods from aerial photographs  
taken 1952, field annotated 1954. Map not field checked  
Selected hydrographic data compiled from USC&GS Chart 9103 (1966)  
This information is not intended for navigational purposes

Universal Transverse Mercator projection. 1927 North American datum  
10,000-foot grid based on Alaska coordinate system, zone 7  
1000-meter Universal Transverse Mercator grid ticks,  
zone 4, shown in blue

Land lines represent unsurveyed and unmarked locations  
predetermined by the Bureau of Land Management  
Folio S-20, Seward Meridian



CONTOUR INTERVAL 50 FEET  
DOTTED LINES REPRESENT 25-FOOT CONTOURS  
DATUM IS MEAN SEA LEVEL  
SOUNDINGS IN FEET—DATUM IS MEAN LOWER LOW WATER  
SHORELINE SHOWN REPRESENTS THE APPROXIMATE LINE OF MEAN HIGH WATER  
THE MEAN RANGE OF TIDE IS APPROXIMATELY 4 FEET

FOR SALE BY U.S. GEOLOGICAL SURVEY  
FAIRBANKS, ALASKA 99701, DENVER, COLORADO 80225, OR WASHINGTON, D.C. 20242  
A FOLDER DESCRIBING TOPOGRAPHIC MAPS AND SYMBOLS IS AVAILABLE ON REQUEST



USCS  
Historical File  
Topographic Division

ROAD CLASSIFICATION  
Trails

GOODNEWS (B-8), ALASKA  
N5915—W16137.5/15X22.5

1954

U.S.G.S.  
FILE COPY  
TOPOGRAPHIC DIVISION

2895  
MAY 6 1969