

UNITED STATES
DEPARTMENT OF THE INTERIOR
GEOLOGICAL SURVEY

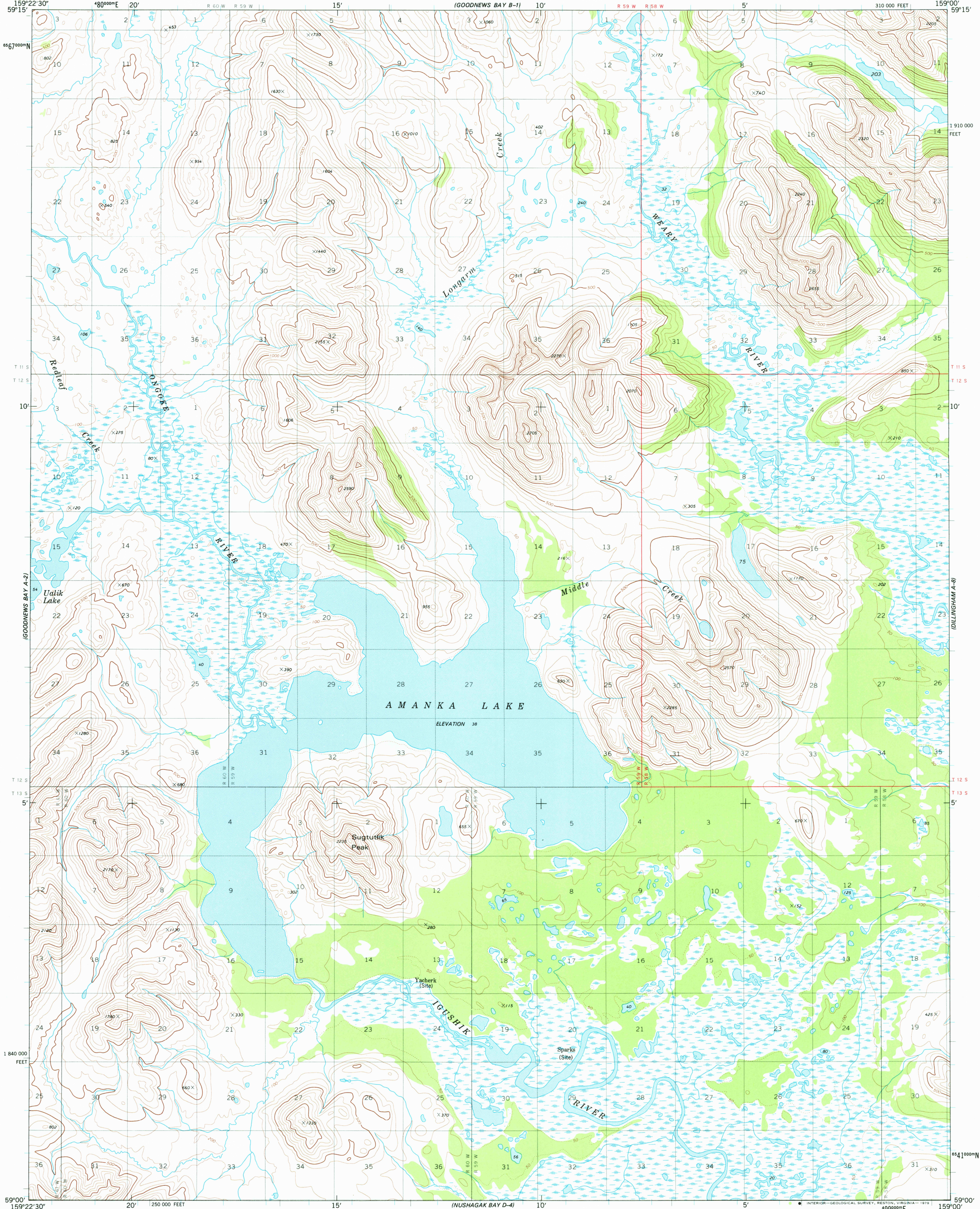


GOODNEWS BAY (A-1) QUADRANGLE

ALASKA

1:63 360 SERIES (TOPOGRAPHIC)

310 000 FEET



Mapped, edited, and published by the Geological Survey

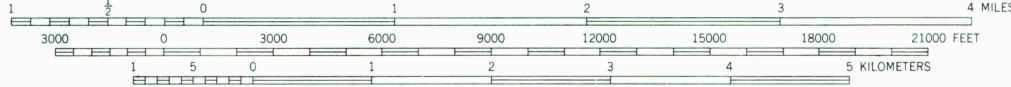
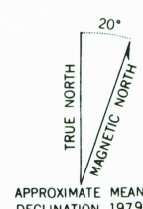
Control by USGS, NOS/NOAA, and USCE

Topography by photogrammetric methods from aerial photographs taken 1972-73. Field annotated 1975. Map not field checked. Map edited 1979

Projection and 1000-meter grid ticks: Universal Transverse Mercator, zone 4
10,000-foot grid ticks based on Alaska coordinate system, zone 6. 1927 North American datum

Gray land lines represent unsurveyed and unmarked locations predetermined by the Bureau of Land Management. Folio S-19, Seward Meridian

Swamps as portrayed, indicate only the wetter areas, usually of low relief, as interpreted from aerial photographs



SCALE 1:63 360
CONTOUR INTERVAL 100 FEET
DOTTED LINES REPRESENT 50-FOOT CONTOURS
NATIONAL GEODETIC VERTICAL DATUM OF 1929

ROAD CLASSIFICATION
No roads or trails in this area



FOR SALE BY U. S. GEOLOGICAL SURVEY
FAIRBANKS, ALASKA 99701, DENVER, COLORADO 80225, OR RESTON, VIRGINIA 22092
A FOLDER DESCRIBING TOPOGRAPHIC MAPS AND SYMBOLS IS AVAILABLE ON REQUEST

GOODNEWS BAY (A-1), ALASKA
N5900-W15900/15X22.5

OCT 10 1979

USGS
Historical File
Topographic Division

1979

2400