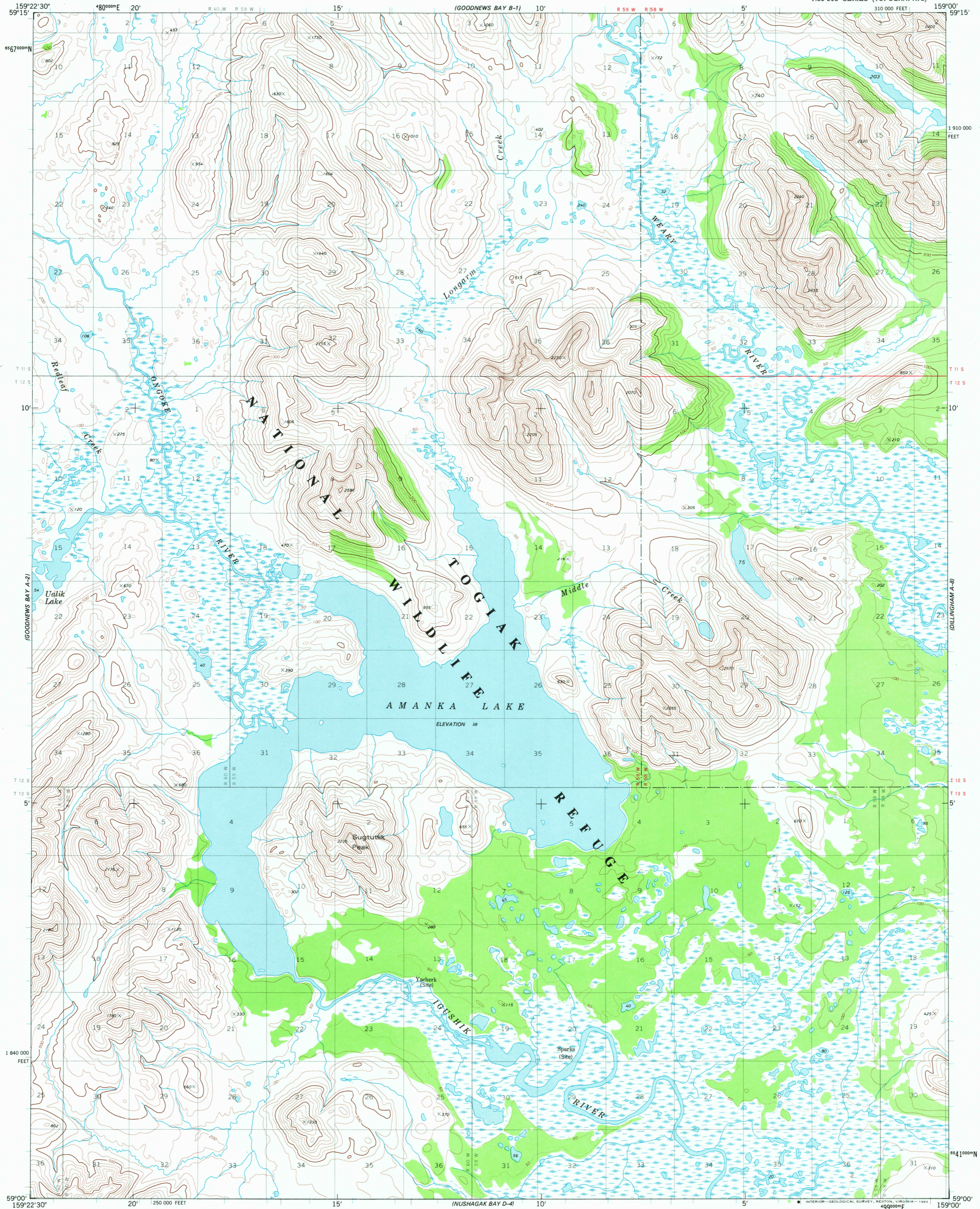


UNITED STATES  
DEPARTMENT OF THE INTERIOR  
GEOLOGICAL SURVEY

GOODNEWS BAY (A-1) QUADRANGLE  
ALASKA

1:63 360 SERIES (TOPOGRAPHIC)  
310 000 FEET



Mapped, edited, and published by the Geological Survey  
Control by USGS, NOS/NOAA, and USCE

Topography by photogrammetric methods from aerial photographs  
taken 1972-73. Field annotated 1975. Map not field checked.  
Map edited 1979

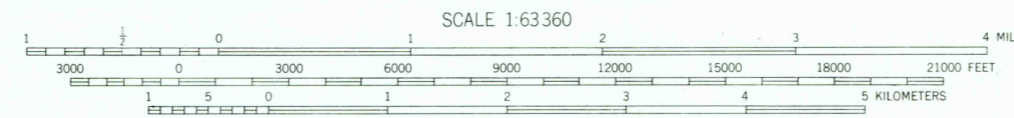
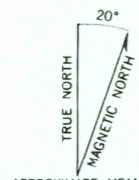
Projection and 1000-meter grid ticks: Universal  
Transverse Mercator, zone 4  
10,000-foot grid ticks based on Alaska coordinate  
system, zone 6. 1927 North American datum

Gray land lines represent unsurveyed and unmarked locations  
predetermined by the Bureau of Land Management.  
Folio S-19, Seward Meridian

Swamps as portrayed, indicate only the wetter areas,  
usually of low relief, as interpreted from aerial photographs

There may be private inholdings within the boundaries of  
the National or State reservations shown on this map

To place on the predicted North American Datum 1983 move  
the projection lines 84 meters north and 134 meters east



CONTOUR INTERVAL 100 FEET  
DOTTED LINES REPRESENT 50-FOOT CONTOURS  
NATIONAL GEODETIC VERTICAL DATUM OF 1929

FOR SALE BY U.S. GEOLOGICAL SURVEY  
FAIRBANKS, ALASKA 99701, DENVER, COLORADO 80225, OR RESTON, VIRGINIA 22092  
A FOLDER DESCRIBING TOPOGRAPHIC MAPS AND SYMBOLS IS AVAILABLE ON REQUEST



GOODNEWS BAY (A-1), ALASKA  
N5900-W15900/15X22.5

ROAD CLASSIFICATION  
No roads or trails in this area

Federal reservations boundaries established by The Alaska National  
Interest Lands Conservation Act, PL 96-487, Dec. 2, 1980 are shown as  
compiled by the administering agencies on the Alaska boundaries map set

1979  
MINOR REVISIONS 1983

RETURN TO:  
NWD HISTORICAL MAP ARCHIVES  
USGS NATIONAL CENTER, MS-522  
RESTON, VA 22092

MAY 1 1983

2500