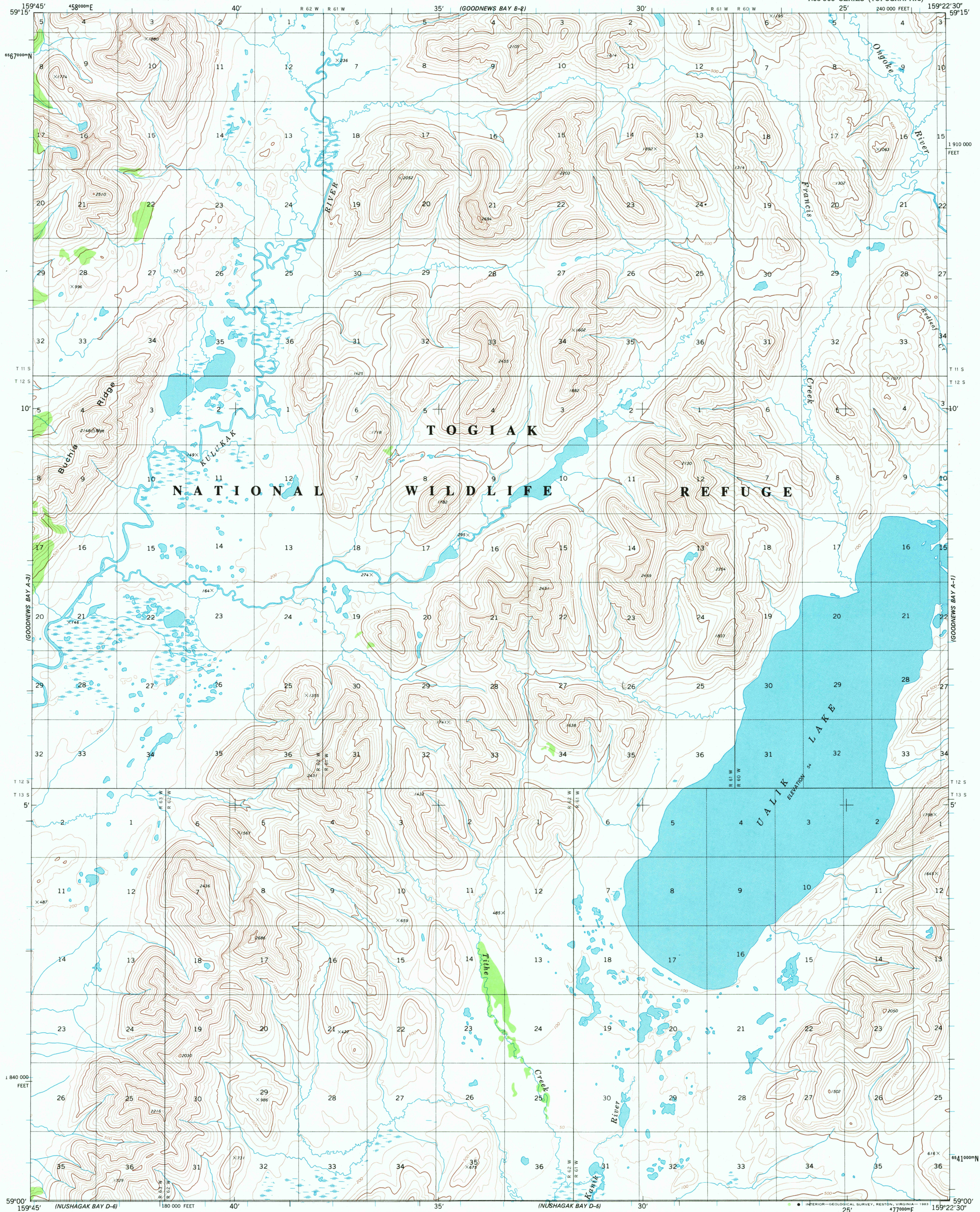


UNITED STATES  
DEPARTMENT OF THE INTERIOR  
GEOLOGICAL SURVEY

GOODNEWS BAY (A-2) QUADRANGLE  
ALASKA

1:63 360 SERIES (TOPOGRAPHIC)



Maped, edited, and published by the Geological Survey

Control by USGS, NOS/NOAA and USCE

Topography by photogrammetric methods from aerial photographs  
taken 1973, field annotated 1975. Map not field checked. Map edited 1979

Projection and 1000-meter grid ticks shown in blue:

Universal Transverse Mercator, zone 4

10,000-foot grid ticks based on Alaska coordinate

system, zone 6. 1927 North American datum

To place on the predicted North American Datum 1983 move

the projection lines 85 meters north and 134 meters east

Gray land lines represent unsurveyed and unmarked locations

predetermined by the Bureau of Land Management

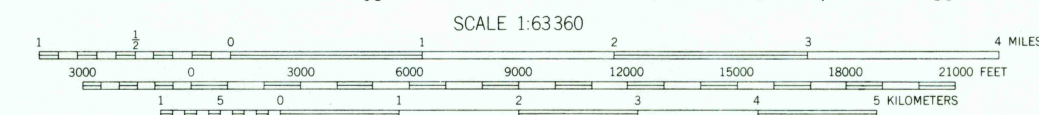
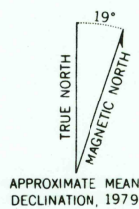
Folio S-19, Seward Meridian

Swamps, as portrayed, indicate only the wetter areas,

usually of low relief, as interpreted from aerial photographs

There may be private inholdings within the boundaries of

the National or State reservations shown on this map



CONTOUR INTERVAL 100 FEET  
DOTTED LINES REPRESENT 50-FOOT CONTOURS  
NATIONAL GEODETIC VERTICAL DATUM OF 1929

FOR SALE BY U. S. GEOLOGICAL SURVEY  
FAIRBANKS, ALASKA 99701, DENVER, COLORADO 80225, OR RESTON, VIRGINIA 22092  
A FOLDER DESCRIBING TOPOGRAPHIC MAPS AND SYMBOLS IS AVAILABLE ON REQUEST



GOODNEWS BAY (A-2), ALASKA  
N5900-W15922.5/15X22.5

1979  
MINOR REVISIONS 1983

Federal reservations boundaries established by The Alaska National  
Interest Lands Conservation Act, PL 96-487, Dec. 2, 1980 are shown as  
compiled by the administering agencies on the Alaska boundaries map set

RETURN TO:  
USGS NATIONAL CENTER, MS-522  
RESTON, VA 22092

ROAD CLASSIFICATION  
No roads or trails in this area

MAY 4 1983