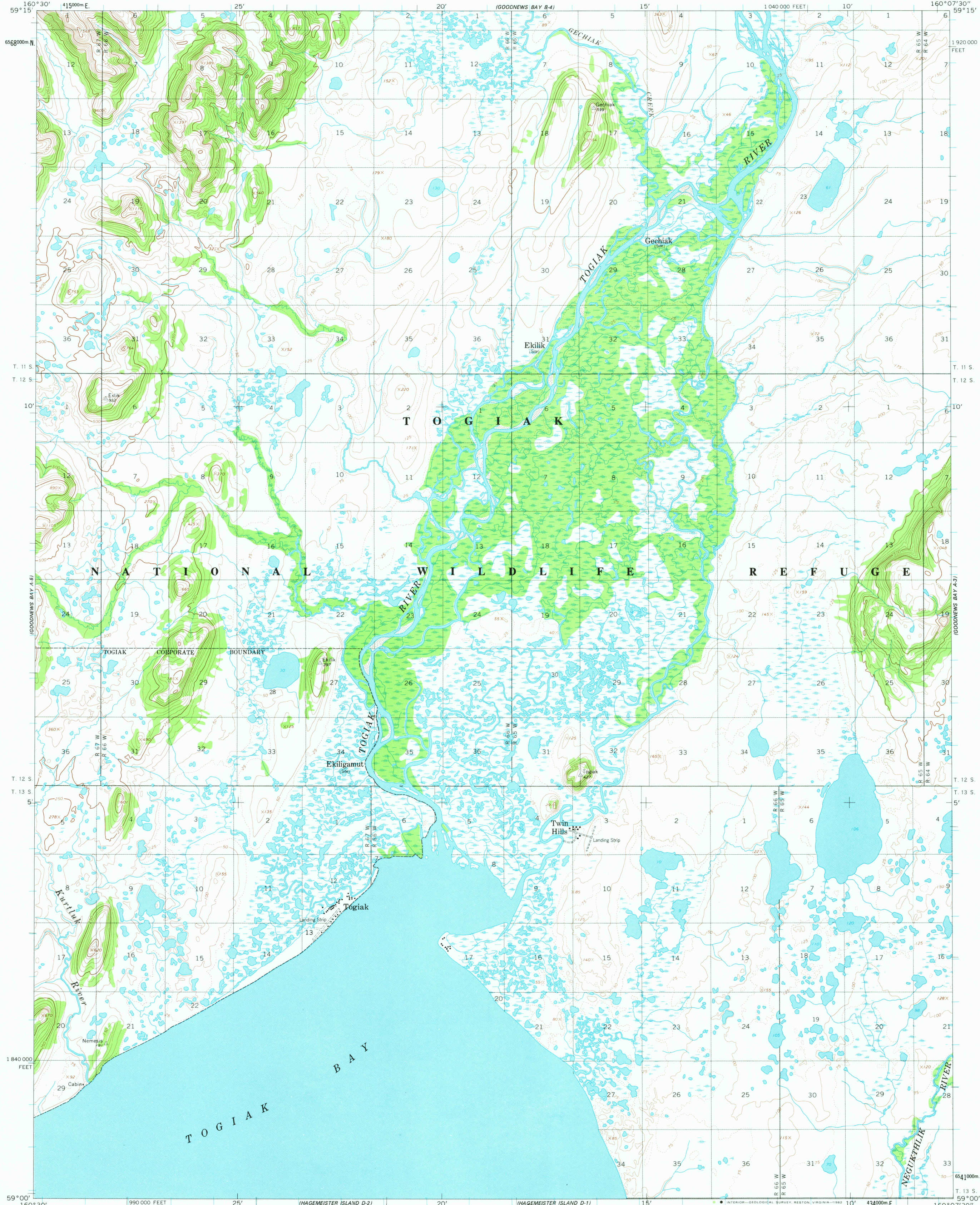


UNITED STATES  
DEPARTMENT OF THE INTERIOR  
GEOLOGICAL SURVEY

GOODNEWS BAY (A-4) QUADRANGLE  
ALASKA  
1:63 360 SERIES (TOPOGRAPHIC)  
(FORMERLY GOODNEWS A-4)



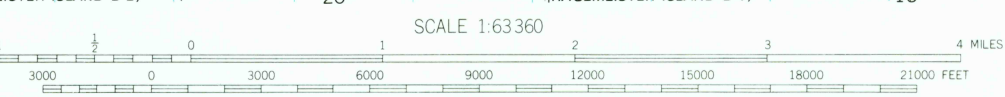
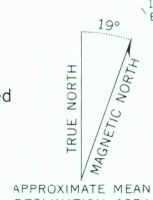
Mapped by the Army Map Service  
Edited and published by the Geological Survey  
Control by USC&GS and USCE

Topography by photogrammetric methods from aerial photographs  
taken 1952, 1953, and 1957, field annotated 1954. Map not field checked  
Universal Transverse Mercator projection. 1927 North American datum  
10,000-foot grid based on Alaska coordinate system, zone 7  
1000-meter Universal Transverse Mercator grid ticks,  
zone 4, shown in blue

Land lines represent unsurveyed and unmarked locations  
pre-determined by the Bureau of Land Management  
Folios S-19 and S-20, Seward Meridian

Swamps, as portrayed, indicate only the wetter areas,  
usually of low relief, as interpreted from aerial photographs  
There may be private inholdings within the boundaries of  
the National or State reservations shown on this map

To place on the predicted North American Datum 1983 move  
the projection lines 87 meters north and 133 meters east



CONTOUR INTERVAL 50 FEET  
DOTTED LINES REPRESENT 25-FOOT CONTOURS  
NATIONAL GEODETTIC VERTICAL DATUM OF 1929  
SHORELINE SHOWN REPRESENTS THE APPROXIMATE LINE OF MEAN HIGH WATER  
THE MEAN RANGE OF TIDE IS APPROXIMATELY 6 FEET

FOR SALE BY U. S. GEOLOGICAL SURVEY  
FAIRBANKS, ALASKA 99701, DENVER, COLORADO 80225, OR RESTON, VIRGINIA 22092  
A FOLDER DESCRIBING TOPOGRAPHIC MAPS AND SYMBOLS IS AVAILABLE ON REQUEST



ROAD CLASSIFICATION  
Unimproved dirt =

GOODNEWS BAY (A-4), ALASKA  
(FORMERLY GOODNEWS A-4)  
N5900-W16007.5/15X22.5

1954  
LIMITED REVISIONS 1981

DEC 08 1982

2, 156