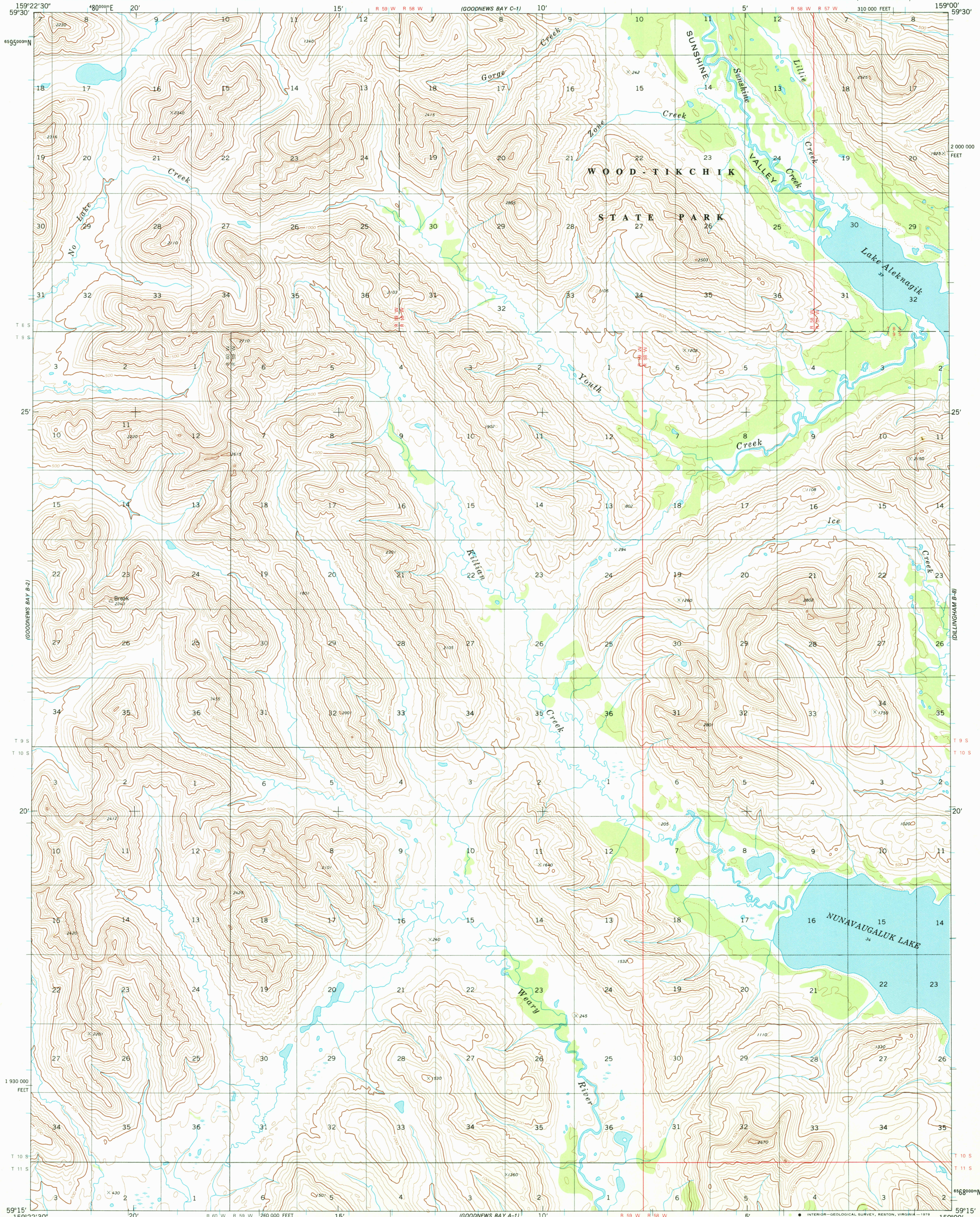


UNITED STATES
DEPARTMENT OF THE INTERIOR
GEOLOGICAL SURVEY

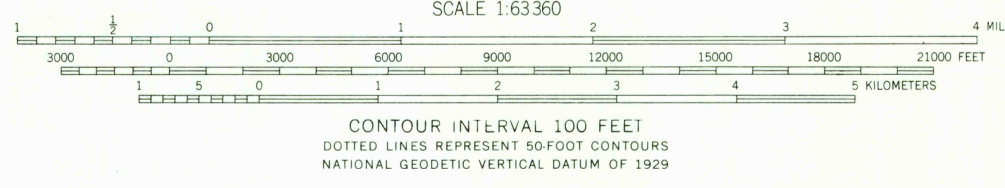
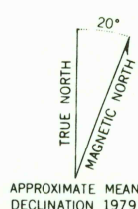


GOODNEWS BAY (B-1) QUADRANGLE
ALASKA

1:63 360 SERIES (TOPOGRAPHIC)



Mapped, edited, and published by the Geological Survey
Control by USGS, NOS/NOAA, and USCE
Topography by photogrammetric methods from aerial photographs
taken 1972-73, field annotated 1976. Map not field checked.
Map edited 1979
Projection and 1000-meter grid ticks: Universal
Transverse Mercator, zone 4
10,000-foot grid ticks based on Alaska coordinate
system, zone 6. 1927 North American datum
Gray land lines represent unsurveyed and unmarked locations
predetermined by the Bureau of Land Management
Folio S-19, Seward Meridian
Swamps as portrayed, indicate only the wetter areas,
usually of low relief, as interpreted from aerial photographs
There may be private inholdings within the boundaries of the
National or State reservations shown on this map



GOODNEWS BAY (B-1), ALASKA
N5915-W15900/15 X 22.5
1979

USGS
Historical File
Topographic Division

ROAD CLASSIFICATION
No roads or trails in this area

2250
NOV - 7 1979