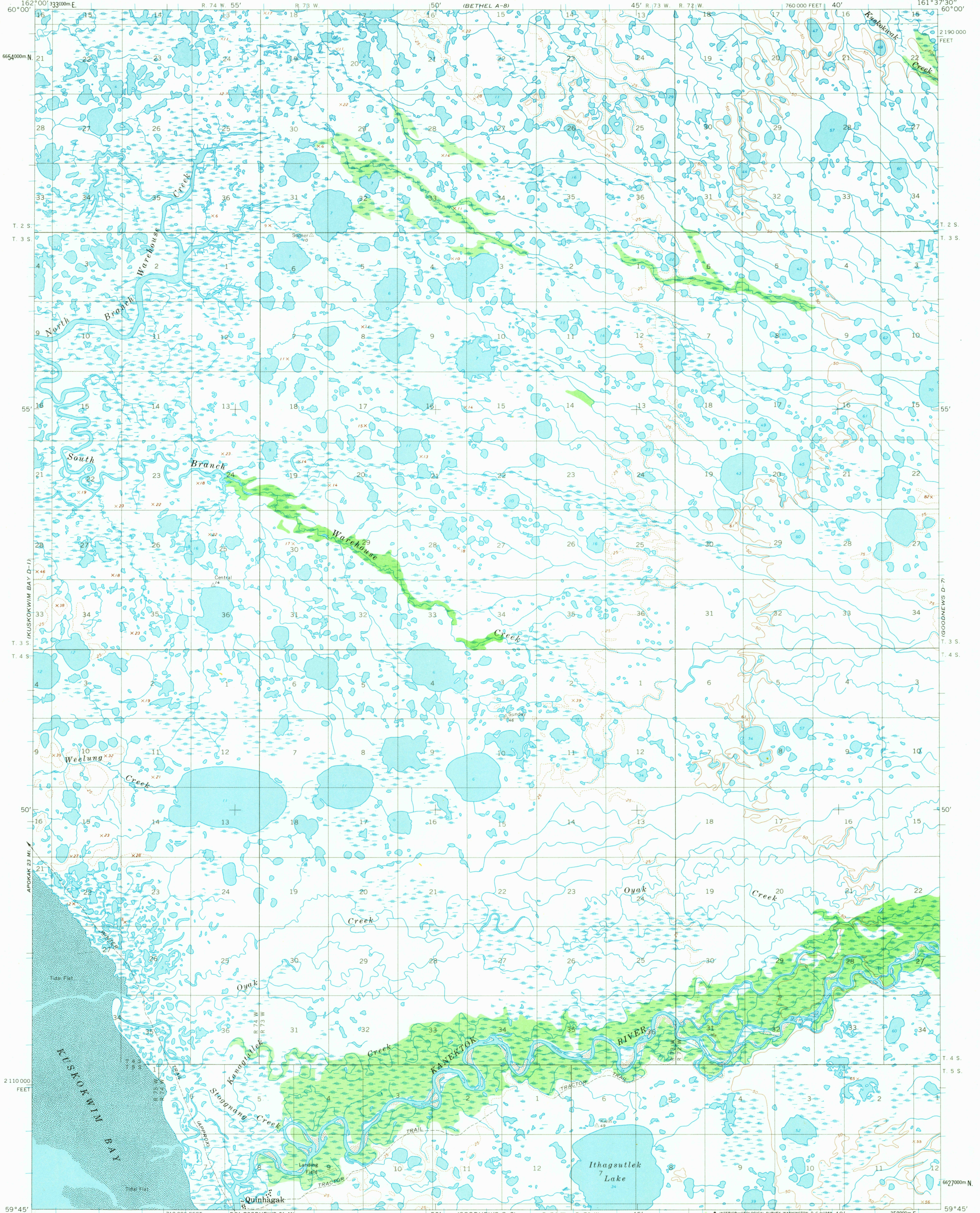


UNITED STATES
DEPARTMENT OF THE INTERIOR
GEOLOGICAL SURVEY

GOODNEWS (D-8) QUADRANGLE
ALASKA
1:63 360 SERIES (TOPOGRAPHIC)



Mapped by the Army Map Service
Edited and published by the Geological Survey

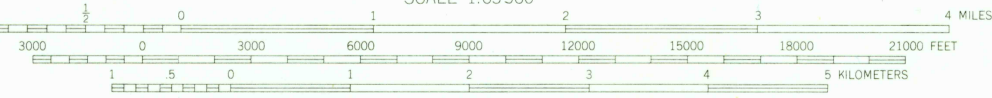
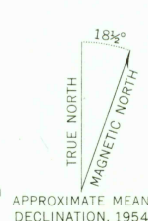
Control by USC&GS and USCE

Topography by photogrammetric methods from aerial photographs
taken 1952-53, field annotated 1954. Map not field checked

Selected hydrographic data compiled from USC&GS Chart 9103 (1966)
This information is not intended for navigational purposes

Universal Transverse Mercator projection. 1927 North American datum
10,000-foot grid based on Alaska coordinate system, zone 7
1000-meter Universal Transverse Mercator grid ticks,
zone 4, shown in blue

Land lines represent unsurveyed and unmarked locations
predetermined by the Bureau of Land Management
Folio S-20, Seward Meridian



CONTOUR INTERVAL 50 FEET

DOTTED LINES REPRESENT 25-FOOT CONTOURS

DATUM IS MEAN SEA LEVEL

SHORELINE SHOWN REPRESENTS THE APPROXIMATE LINE OF MEAN HIGH WATER

THE MEAN RANGE OF TIDE IS APPROXIMATELY 5 FEET

FOR SALE BY U.S. GEOLOGICAL SURVEY
FAIRBANKS, ALASKA 99701, DENVER, COLORADO 80225, OR WASHINGTON, D. C. 20242
A FOLDER DESCRIBING TOPOGRAPHIC MAPS AND SYMBOLS IS AVAILABLE ON REQUEST

U.S.G.S.

FILE COPY
TOPOGRAPHIC DIVISION

ROAD CLASSIFICATION

Trails

GOODNEWS (D-8), ALASKA
N5945-W16137.5/15X22.5

USGS

Historical File
Topographic Division

1954

MAY 16 1969