

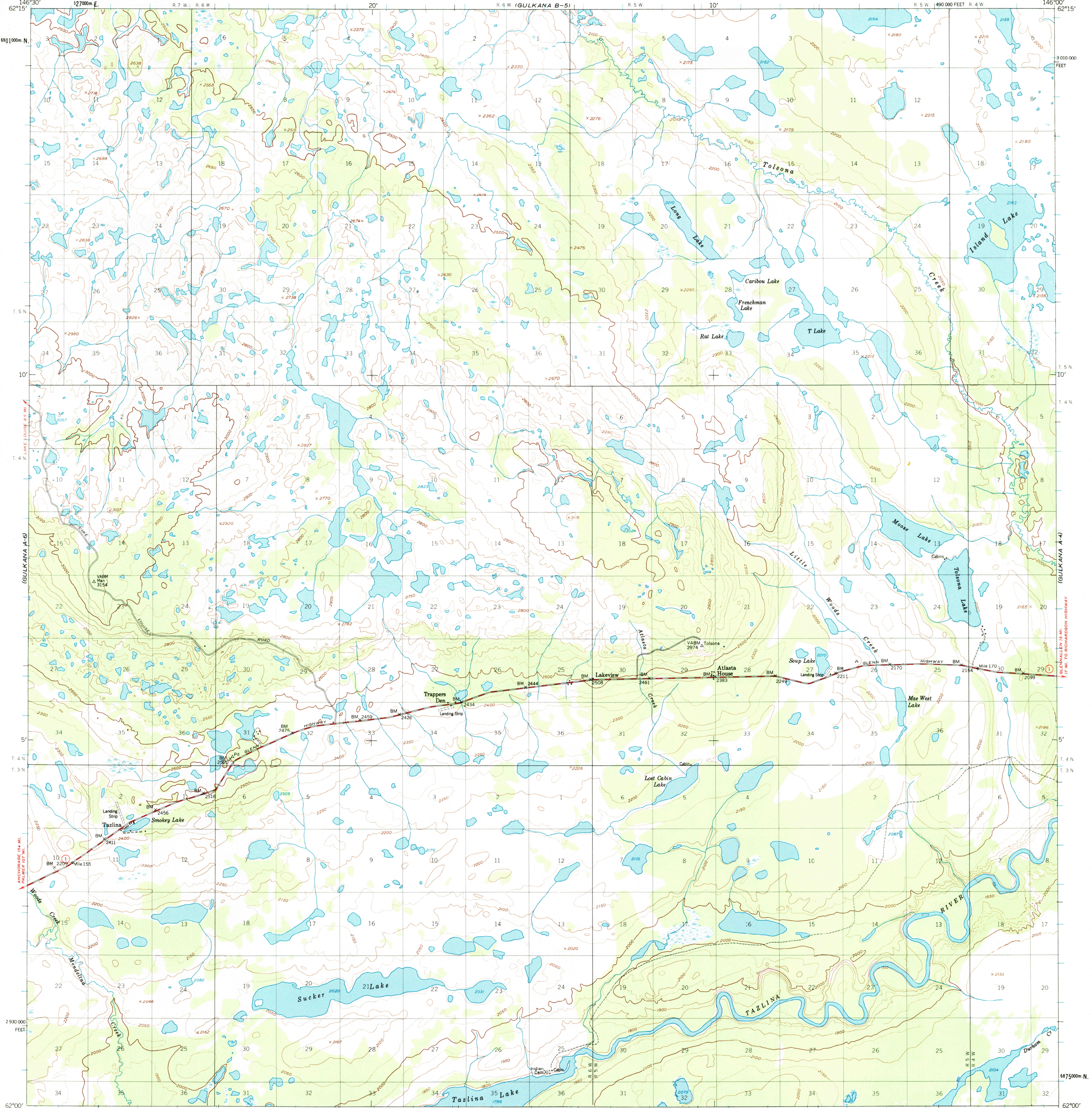
GULKANA B-6

GULKANA B-4

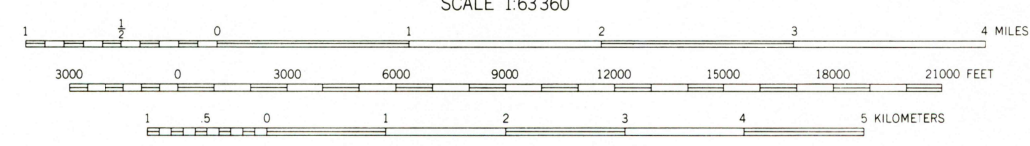
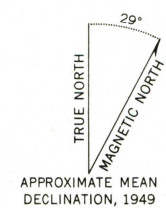


U.S. DEPARTMENT OF THE INTERIOR
U.S. GEOLOGICAL SURVEY

GULKANA (A-5) QUADRANGLE
ALASKA
1:63 360 SERIES (TOPOGRAPHIC)



Mapped, edited, and published by the Geological Survey
Control by USGS and USC&GS
Topography by photogrammetric methods from aerial photographs
taken 1948, field annotated 1949. Map not field checked
Universal Transverse Mercator projection, 1927 North American datum
10,000-foot grid based on Alaska coordinate system, zone 3
1000-meter Universal Transverse Mercator grid ticks,
zone 6, shown in blue
Land lines represent unsurveyed and unmarked locations
pre-determined by the Bureau of Land Management
Folio CR-4, Copper River Meridian
Swamps, as portrayed, indicate only the wetter areas,
usually of low relief, as interpreted from aerial photographs



ROAD CLASSIFICATION
Medium-duty ——— Light-duty ———
Unimproved dirt - - - - -
State Route ○

FOR SALE BY U.S. GEOLOGICAL SURVEY, P.O. BOX 25286, DENVER, COLORADO 80225
A FOLDER DESCRIBING TOPOGRAPHIC MAPS AND SYMBOLS IS AVAILABLE ON REQUEST

GULKANA (A-5), ALASKA
N6200-W14600/15X30
1949
MINOR REVISIONS 1964

RECEIVED
OCT 31 1998
USGS NMD
HISTORICAL MAP ARCHIVES

