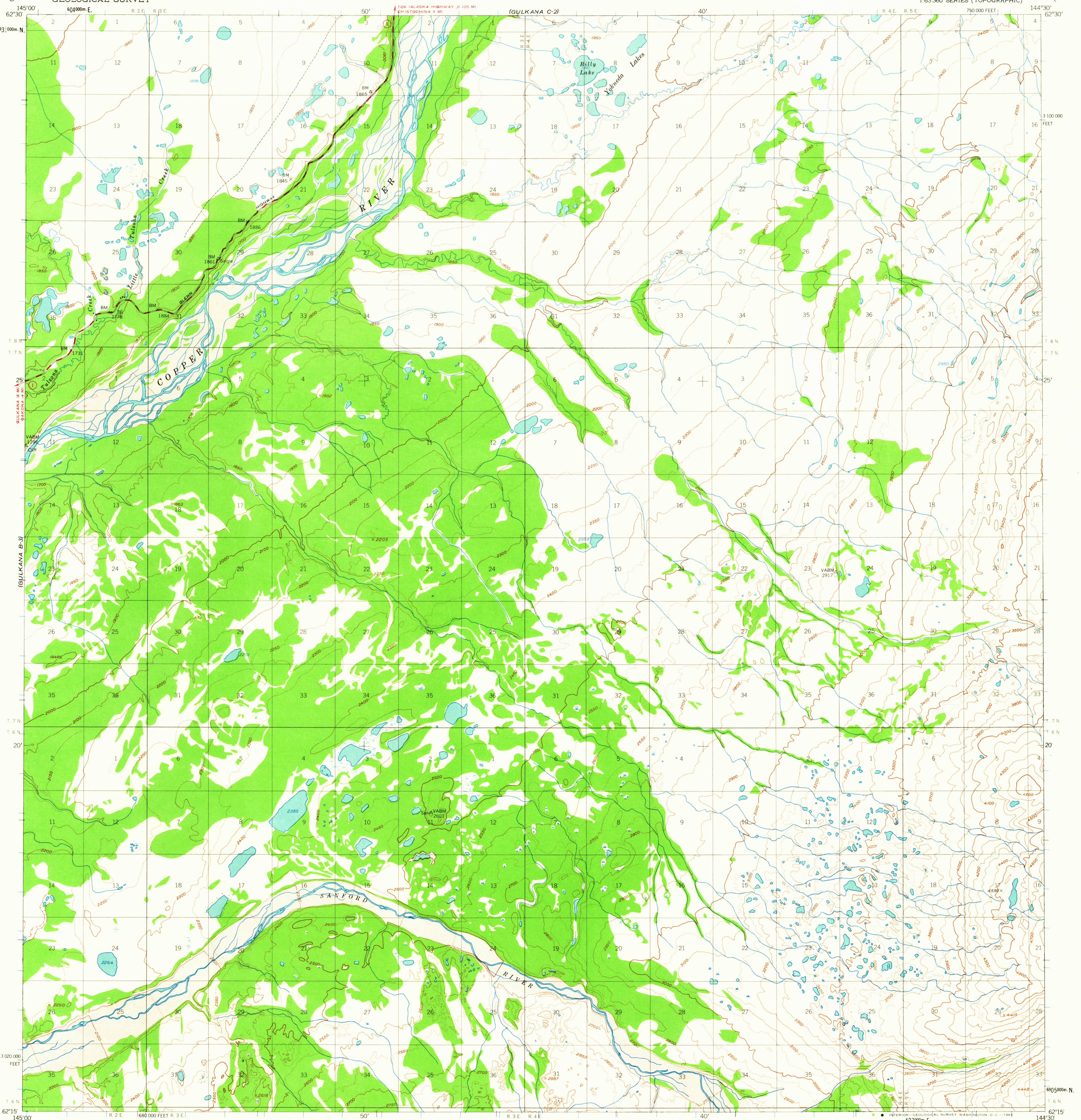


(GULKANA C-3)

(GULKANA C-1)

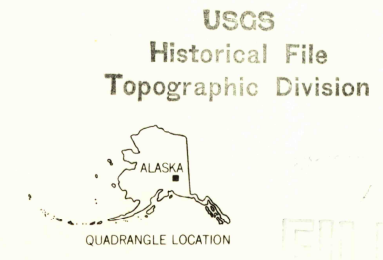
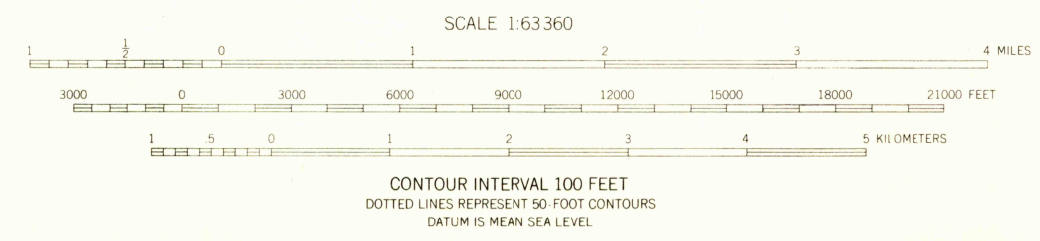
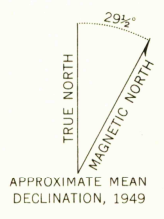
UNITED STATES  
DEPARTMENT OF THE INTERIOR  
GEOLOGICAL SURVEY

GULKANA (B-2) QUADRANGLE  
ALASKA  
1:63 360 SERIES (TOPOGRAPHIC)



(GULKANA A-3)

Mapped, edited, and published by the Geological Survey  
Control by USGS and USC&GS  
Topography by photogrammetric methods from aerial photographs  
taken 1949, field annotated 1949. Map not field checked  
Universal Transverse Mercator projection, 1927 North American datum  
10,000-foot grid based on Alaska coordinate system, zone 3  
1000-meter Universal Transverse Mercator grid ticks,  
zone 6, shown in blue  
Land lines represent unsurveyed and unmarked locations  
predetermined by the Bureau of Land Management  
Folio CR-3, Copper River Meridian  
Swamps, as portrayed, indicate only the wetter areas,  
usually of low relief, as interpreted from aerial photographs



ROAD CLASSIFICATION  
Medium-duty ——— Unimproved dirt ———  
○ State Route

GULKANA (B-2), ALASKA  
N6215 W14430/15X30

1949  
MINOR REVISIONS 1964

FOR SALE BY U. S. GEOLOGICAL SURVEY  
FAIRBANKS, ALASKA, DENVER 25, COLORADO OR WASHINGTON 25, D. C.  
A FOLDER DESCRIBING TOPOGRAPHIC MAPS AND SYMBOLS IS AVAILABLE ON REQUEST

1525  
FEB 9 1965