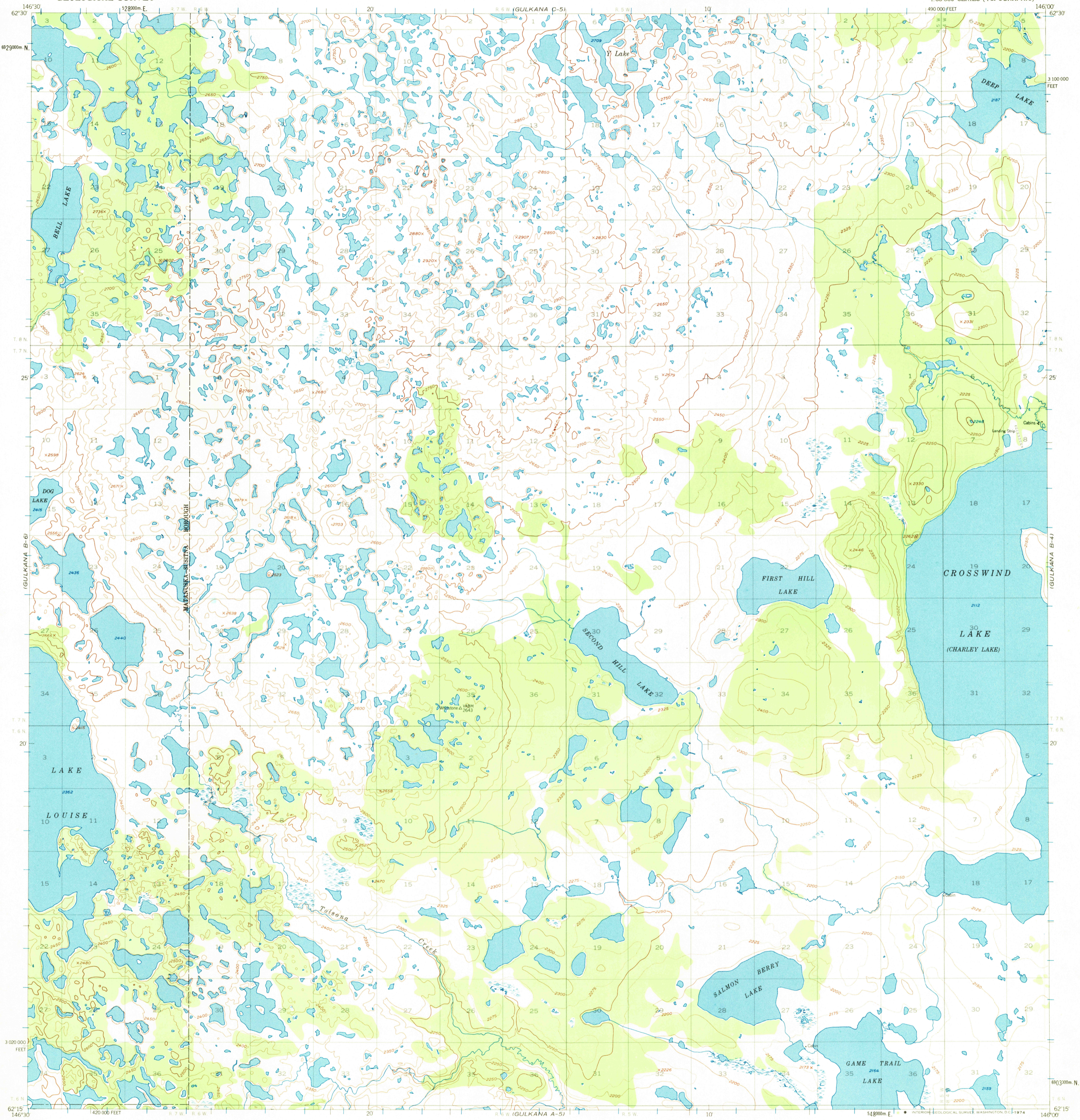
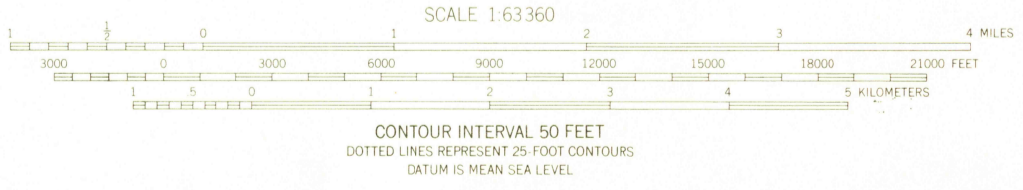


UNITED STATES
DEPARTMENT OF THE INTERIOR
GEOLOGICAL SURVEY

GULKANA (B-5) QUADRANGLE
ALASKA
1:63 360 SERIES (TOPOGRAPHIC)



Mapped, edited, and published by the Geological Survey
Control by USGS
Topography by photogrammetric methods from aerial photographs taken 1950, field annotated 1951. Map not field checked
Universal Transverse Mercator projection, 1927 North American datum
10,000-foot grid based on Alaska coordinate system, zone 3
1000-meter Universal Transverse Mercator grid ticks, zone 6, shown in blue
Land lines represent unsurveyed and unmarked locations predetermined by the Bureau of Land Management Folio CR-4, Copper River Meridian
Swamps, as portrayed, indicate only the wetter areas, usually of low relief, as interpreted from aerial photographs



USGS
HISTORICAL FILE
TOPOGRAPHIC DIVISION

FOR SALE BY U. S. GEOLOGICAL SURVEY
FAIRBANKS, ALASKA 99701, DENVER, COLORADO 80225, OR WASHINGTON, D. C. 20242
A FOLDER DESCRIBING TOPOGRAPHIC MAPS AND SYMBOLS IS AVAILABLE ON REQUEST

GULKANA (B-5), ALASKA
N6215-W14600/15X30
1951
MINOR REVISIONS 1972

ROAD CLASSIFICATION
No roads or trails in this area
JAN 3 1 1974

2345