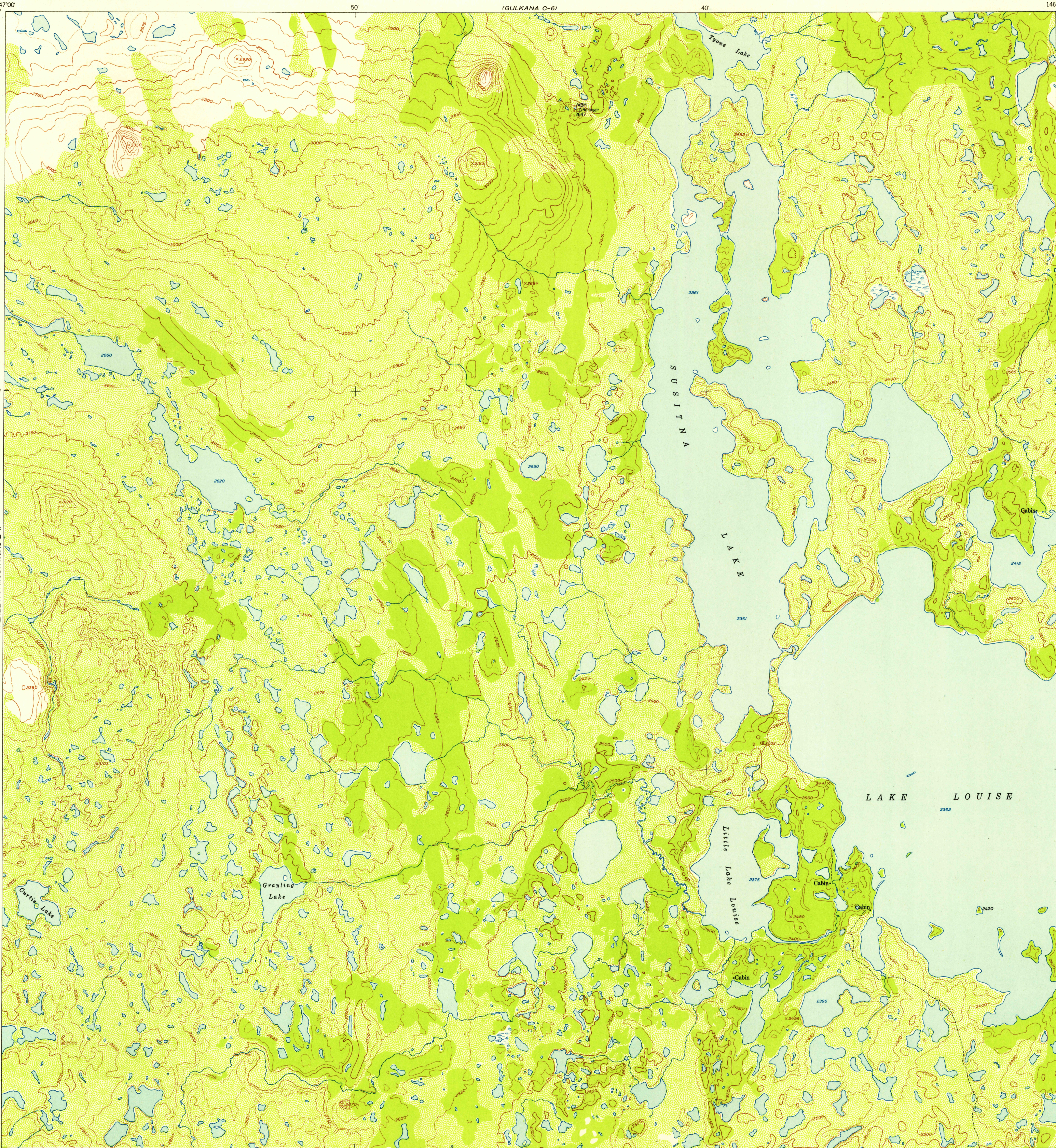


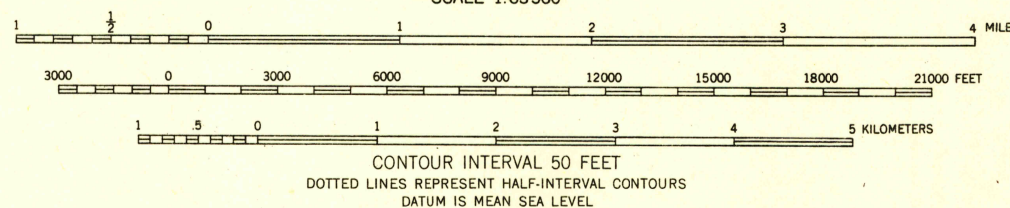
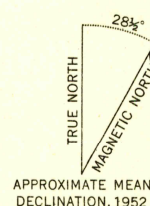
UNITED STATES
DEPARTMENT OF THE INTERIOR
GEOLOGICAL SURVEY

U. S. G. S.
FILE COPY
Inspection and Editing.

GULKANA (B-6) QUADRANGLE
ALASKA-THIRD JUDICIAL DIVISION
1:63 360 SERIES (TOPOGRAPHIC)



Maped, edited, and published by the Geological Survey
Control by USGS
Topography from aerial photographs by multiplex methods 1952
Aerial photographs taken 1950
Universal Transverse Mercator projection, zone 6
1927 North American datum
Unchecked elevations are shown in brown and blue



FOR SALE BY U. S. GEOLOGICAL SURVEY, FEDERAL CENTER, DENVER, COLORADO OR WASHINGTON 25, D. C.
A FOLDER DESCRIBING TOPOGRAPHIC MAPS AND SYMBOLS IS AVAILABLE ON REQUEST

U. S. G. S.
FILE COPY
Inspection and Editing.

USGS
Historical File
Topographic Division

GULKANA (B-6), ALASKA
N6215-W14630/15X30
1952

ROAD CLASSIFICATION
ALL WEATHER ROADS DRY WEATHER ROADS
Hard-surface.....None Improved dirt.....None
Other.....None Unimproved dirt.....None
Trails.....

AUG 14 1953