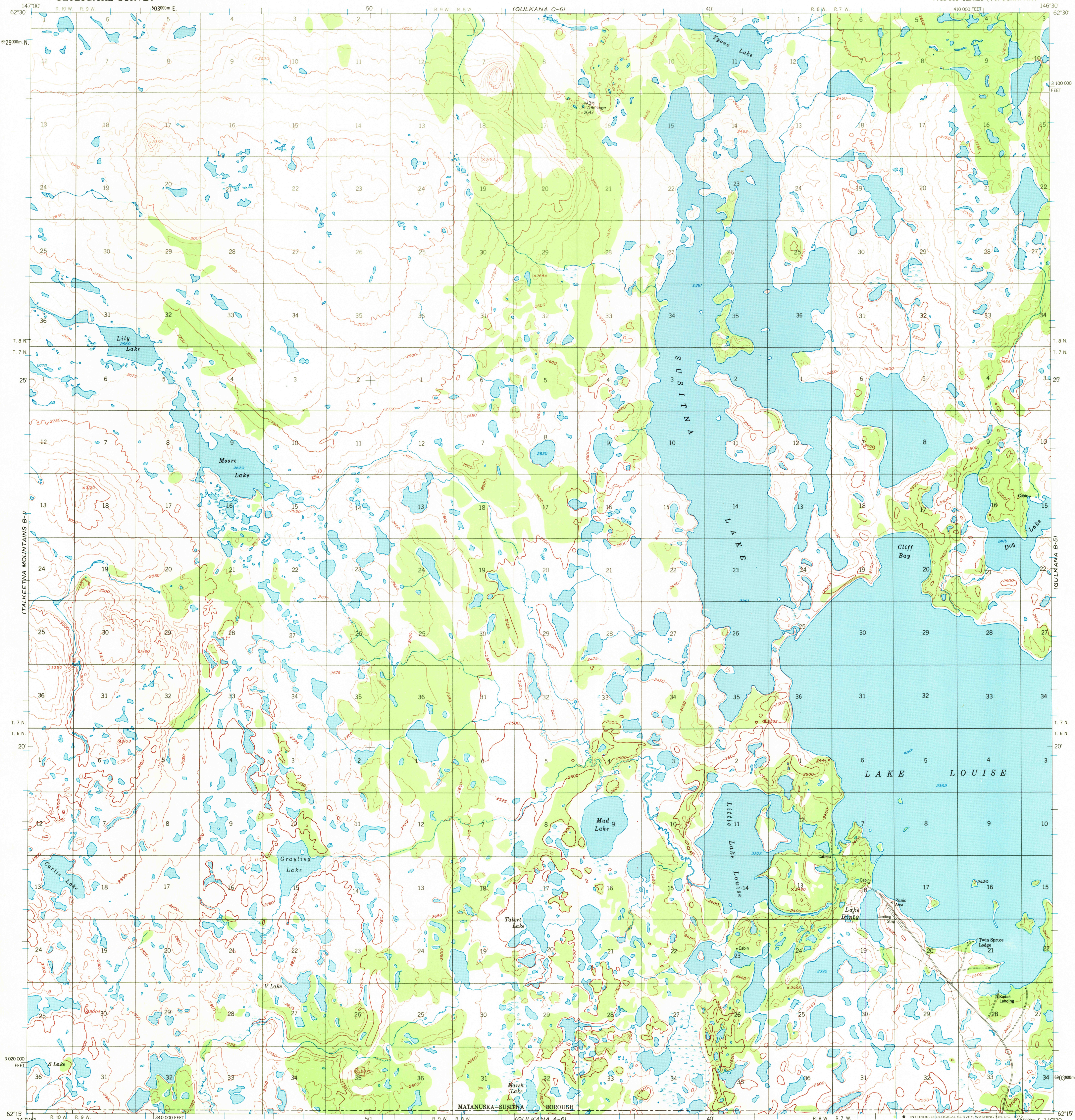
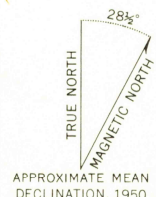


UNITED STATES
DEPARTMENT OF THE INTERIOR
GEOLOGICAL SURVEY

GULKANA (B-6) QUADRANGLE
ALASKA
1:63,360 SERIES (TOPOGRAPHIC)



Maped, edited, and published by the Geological Survey
Control by USGS
Topography by photogrammetric methods from aerial photographs
taken 1950. Map not field checked
Universal Transverse Mercator projection, 1927 North American datum
10,000-foot grid based on Alaska coordinate system, zone 3
1000-meter Universal Transverse Mercator grid ticks,
zone 6, shown in blue
Land lines represent unsurveyed and unmarked locations
predetermined by the Bureau of Land Management
Folio CR 4, Copper River Meridian
Swamps, as portrayed, indicate only the wetter areas
usually of low relief, as interpreted from aerial photographs



CONTOUR INTERVAL 50 FEET
DOTTED LINES REPRESENT 25-FOOT CONTOURS
DATUM IS MEAN SEA LEVEL



ROAD CLASSIFICATION
Light duty ————— Unimproved dirt - - - - -

GULKANA (B-6), ALASKA
N6215-W14630/15X30

1950
MINOR REVISIONS 1971

FOR SALE BY U. S. GEOLOGICAL SURVEY
FAIRBANKS, ALASKA 99701, DENVER, COLORADO 80225, OR WASHINGTON, D. C. 20242
A FOLDER DESCRIBING TOPOGRAPHIC MAPS AND SYMBOLS IS AVAILABLE ON REQUEST

USGS
HISTORICAL FILE
TOPOGRAPHIC DIVISION

SEP 18 1972

3500