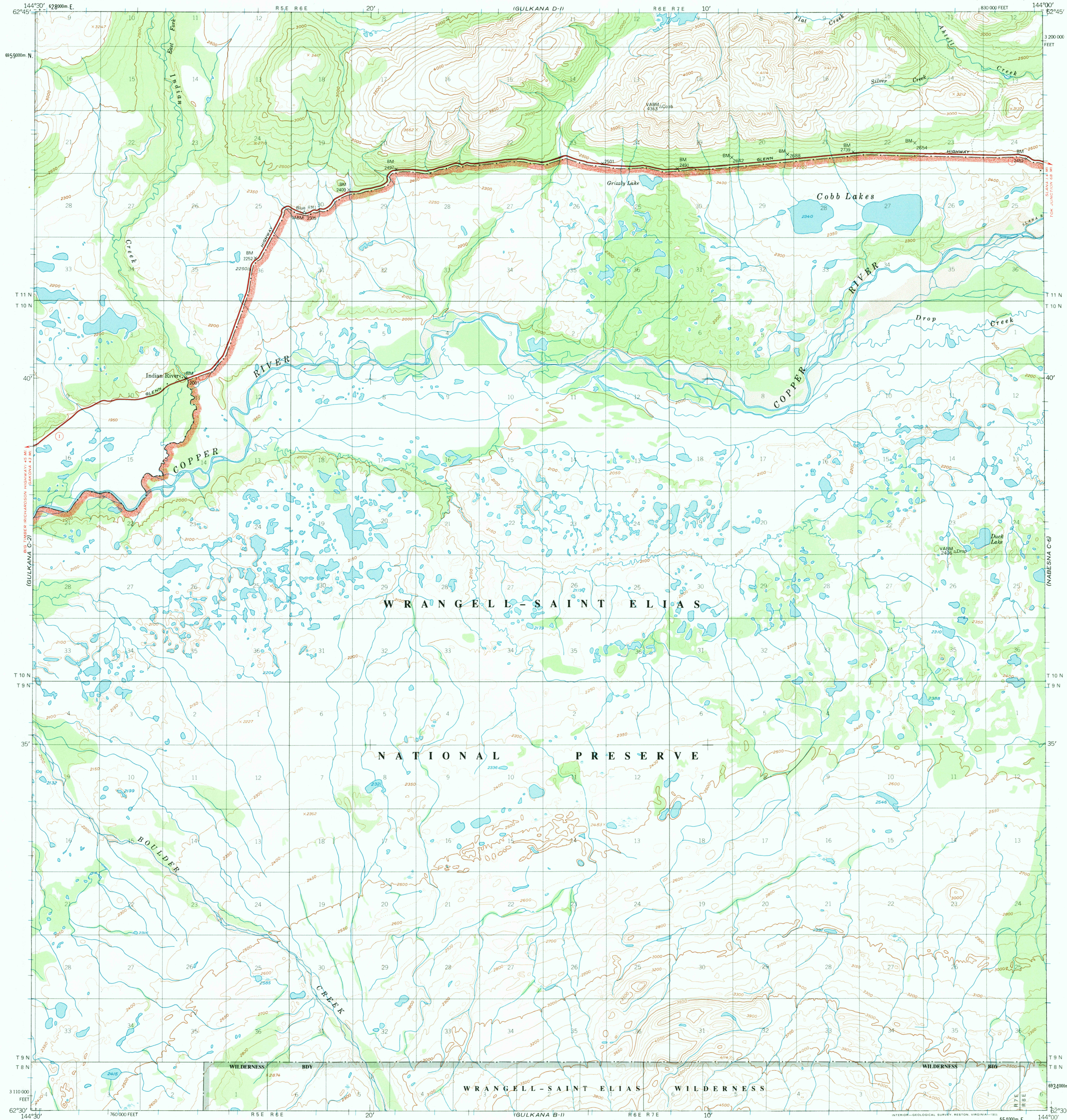
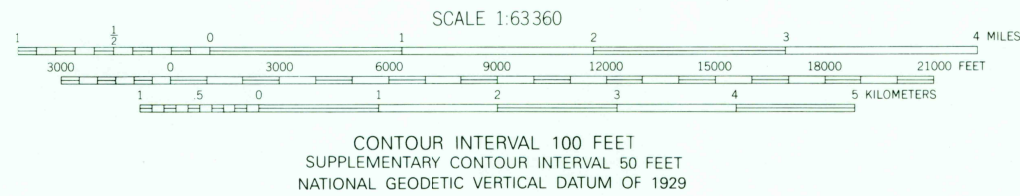
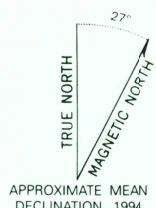


UNITED STATES
DEPARTMENT OF THE INTERIOR
GEOLOGICAL SURVEY

GULKANA (C-1) QUADRANGLE
ALASKA
1:63 360 SERIES (TOPOGRAPHIC)

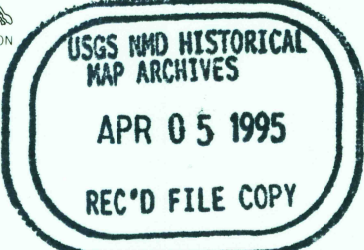


Produced by the United States Geological Survey
Control by USGS and NOS/NOAA
Compiled from aerial photographs taken 1949,
field annotated 1949. Map not field checked
North American Datum of 1927 (NAD 27). Projection and
10,000-foot ticks: Alaska Coordinate System, zone 3 (Transverse Mercator)
Blue 1000-meter Universal Transverse Mercator ticks, zone 6
North American Datum of 1983 (NAD 83) is shown by dashed
corner ticks. The values of the shift between NAD 27 and NAD 83
for 7.5-minute intersections are obtainable from National Geodetic
Survey NADCON software
There may be private inholdings within the boundaries of
the National or State reservations shown on this map
Federal reservation boundaries established by the Alaska National
Interest Lands Conservation Act, PL96-487, Dec. 2, 1980, are
shown as compiled by the administering agencies
Land lines represent unsurveyed and unmarked locations
predetermined by the Bureau of Land Management
Folios CR-3, Copper River Meridian



ROAD CLASSIFICATION
Heavy duty ————— Unimproved dirt - - - - -
○ State Route

FOR SALE BY U. S. GEOLOGICAL SURVEY
FAIRBANKS, ALASKA 99701, DENVER, COLORADO 80225, OR RESTON, VIRGINIA 22092
A FOLDER DESCRIBING TOPOGRAPHIC MAPS AND SYMBOLS IS AVAILABLE ON REQUEST



GULKANA (C-1), AK
62144-E1-TF-063
1949
MINOR REVISION 1994