

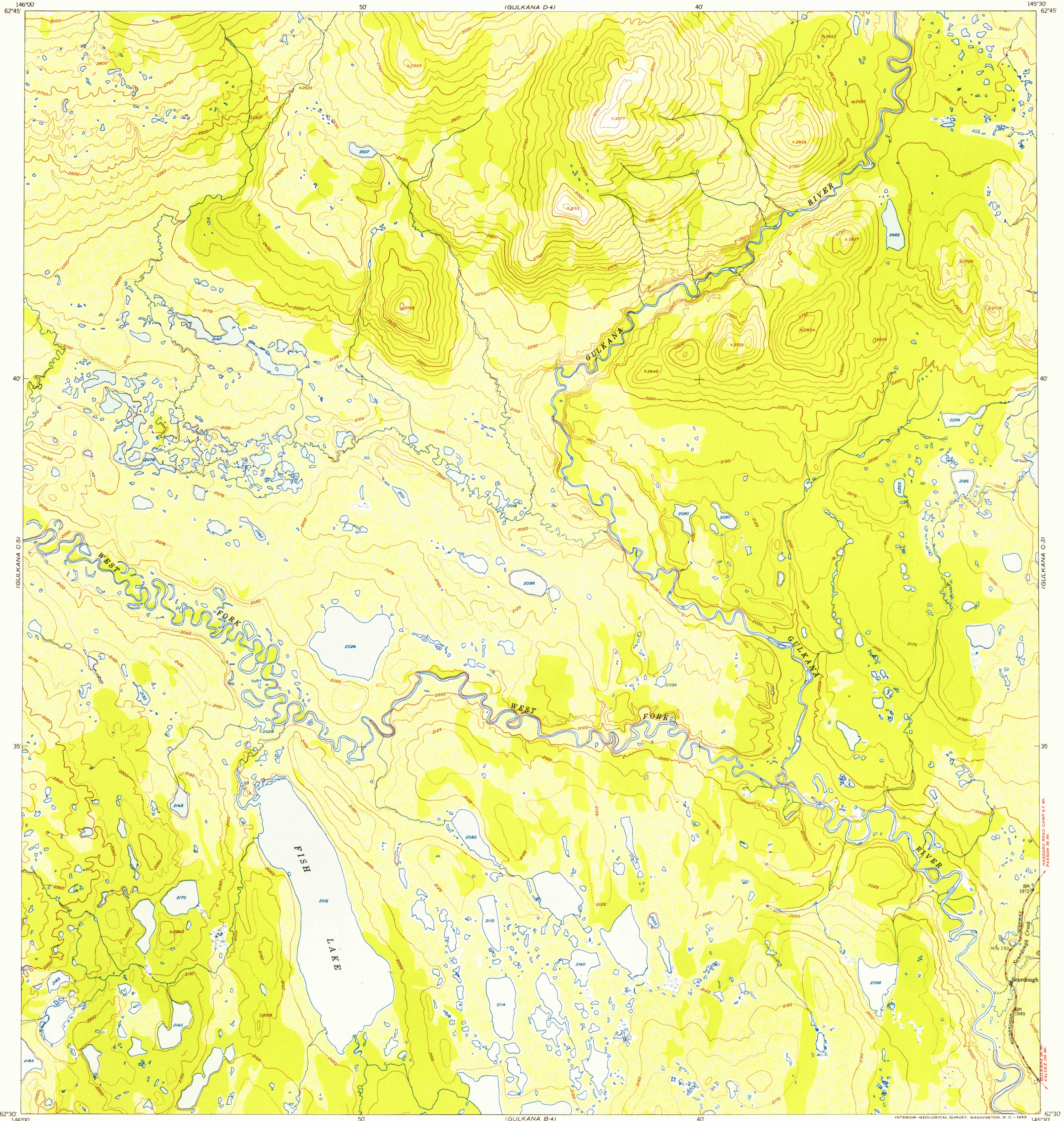
GULKANA D-5

UNITED STATES
DEPARTMENT OF THE INTERIOR
GEOLOGICAL SURVEY

U. S. G. S.
FILE COPY
Inspection and Editing

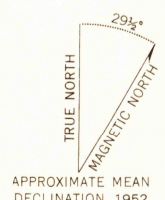
GULKANA (C-4) QUADRANGLE
ALASKA-THIRD JUDICIAL DIVISION
1:63 360 SERIES (TOPOGRAPHIC)

GULKANA D-3

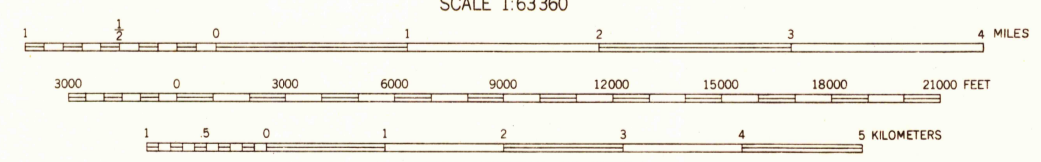


GULKANA B-5

Mapped, edited, and published by the Geological Survey
Control by USGS and USC&GS
Topography from aerial photographs by multiplex methods 1952
Aerial photographs taken 1949
Universal Transverse Mercator projection, zone 6
1927 North American datum
Unchecked elevations are shown in brown and blue



APPROXIMATE MEAN
DECLINATION, 1952



CONTOUR INTERVAL 50 FEET
DOTTED LINES REPRESENT HALF-INTERVAL CONTOURS
DATUM IS MEAN SEA LEVEL

FOR SALE BY U. S. GEOLOGICAL SURVEY, FEDERAL CENTER, DENVER, COLORADO OR WASHINGTON 25, D. C.
A FOLDER DESCRIBING TOPOGRAPHIC MAPS AND SYMBOLS IS AVAILABLE ON REQUEST

U. S. G. S.
FILE COPY
Inspection and Editing

USGS
Historical File
Topographic Division

GULKANA (C-4), ALASKA
N6230-W14530/15X30
1952

GULKANA B-3

SEP 22 1953
2105