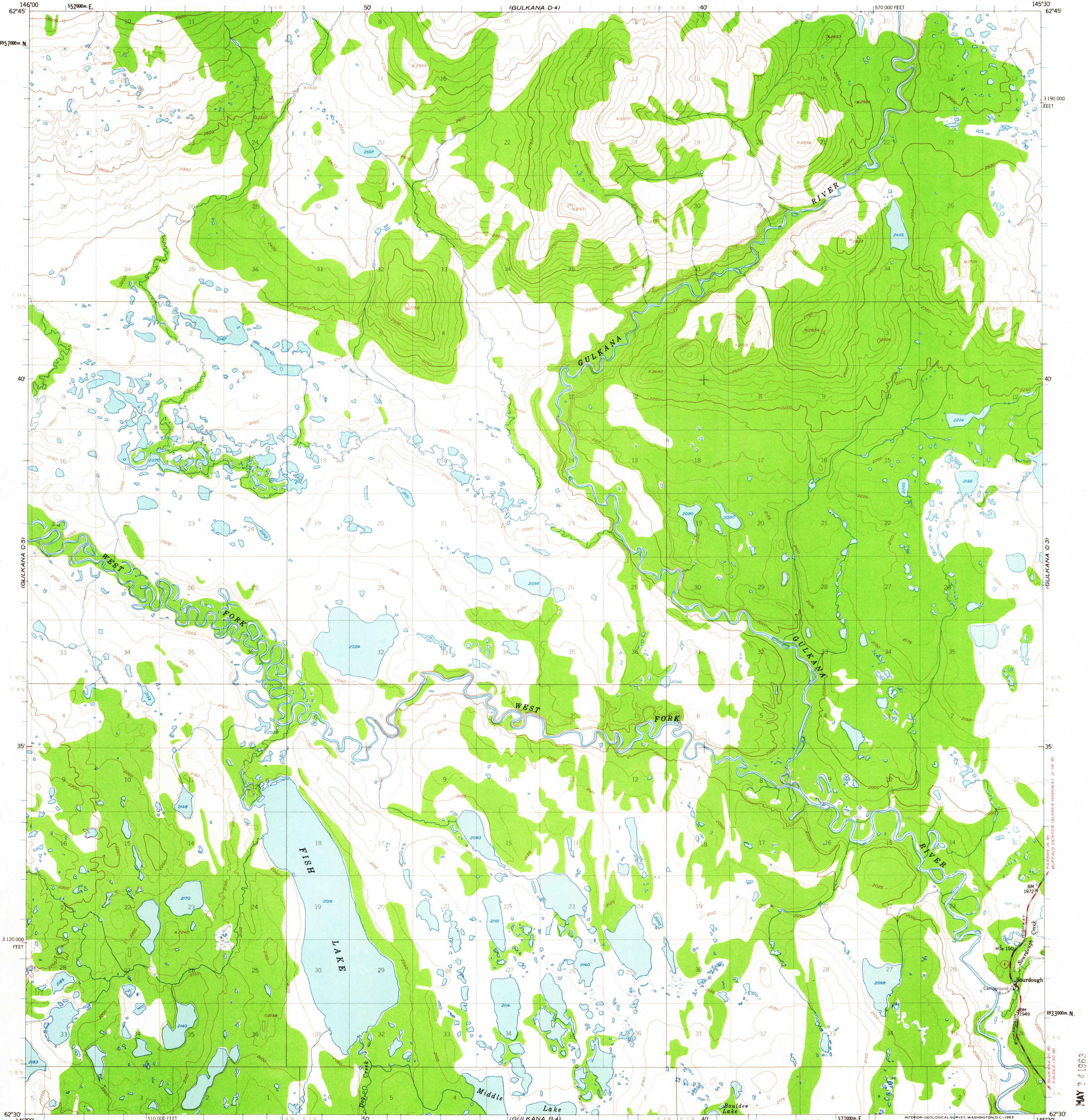


GULKANA D-5

GULKANA D-3

UNITED STATES
DEPARTMENT OF THE INTERIOR
GEOLOGICAL SURVEY

GULKANA (C-4) QUADRANGLE
ALASKA
1:63 360 SERIES (TOPOGRAPHIC)

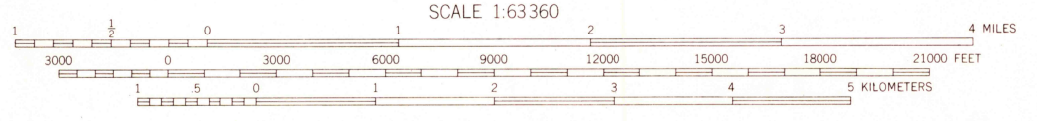


GULKANA B-5

GULKANA B-3

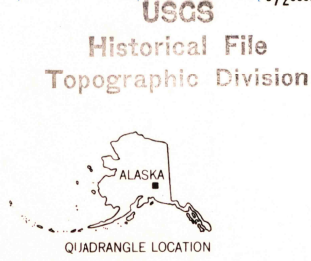
Mapped, edited, and published by the Geological Survey
Control by USGS and USC&GS
Topography by photogrammetric methods from aerial photographs
taken 1949, field annotated 1950. Map not field checked
Universal Transverse Mercator projection, 1927 North American datum
10,000-foot grid based on Alaska coordinate system, zone 3
1,000-meter Universal Transverse Mercator grid ticks, zone 6,
shown in blue
Land lines represent unsurveyed and unmarked locations
predetermined by the Bureau of Land Management
Folio CR-4, Copper River Meridian
Swamps, as portrayed, indicate only the wetter areas,
usually of low relief, as interpreted from aerial photographs

TRUE NORTH
MAGNETIC NORTH
APPROXIMATE MEAN
DECLINATION, 1950



CONTOUR INTERVAL 50 FEET
DOTTED LINES REPRESENT 25-FOOT CONTOURS
DATUM IS MEAN SEA LEVEL

FOR SALE BY U. S. GEOLOGICAL SURVEY
FAIRBANKS, ALASKA DENVER 25, COLORADO WASHINGTON 25, D. C.
A FOLDER DESCRIBING TOPOGRAPHIC MAPS AND SYMBOLS IS AVAILABLE ON REQUEST



ROAD CLASSIFICATION
Medium-duty ——— Unimproved dirt ———
○ State Route

GULKANA (C-4), ALASKA
N6230-W14530/15X30
1950
MINOR REVISIONS 1962

MAY 24 1963

2085